



SEPTEMBER 2012

MONTHLY REPORT

**Queensland Reconstruction
Authority**

Document details:

Security classification	Public
Date of review of security classification	September 2012
Authority	Queensland Reconstruction Authority
Author	Chief Executive Officer
Document status	Final
Version	1.0

Contact for Enquiries:

All enquiries regarding this document should be directed to:

Queensland Reconstruction Authority

Phone the call centre - **1800 110 841**

Mailing Address

Queensland Reconstruction Authority

PO Box 15428

City East Q 4002

Alternatively, contact the Queensland Reconstruction Authority by emailing info@qldra.org.au

Licence

This material is licensed under a [Creative Commons - Attribution 3.0 Australia licence](#).



The Queensland Reconstruction Authority requests attribution in the following manner:

© The State of Queensland (Queensland Reconstruction Authority) 2011-2012

Information security

This document has been classified using the [Queensland Government Information Security Classification Framework \(QGISCF\)](#) as PUBLIC and will be managed according to the requirements of the QGISCF.

Message from the Chief Executive Officer

Major General Richard Wilson AO
Chairman
Queensland Reconstruction Authority

Dear Major General Wilson

It is with pleasure that I present the September 2012 Monthly Report – the nineteenth report to the Board of the Queensland Reconstruction Authority (the Authority).

The Authority was established under the *Queensland Reconstruction Authority Act 2011* following the unprecedented natural disasters which struck Queensland over the summer months of 2010-11. The Authority is charged with managing and coordinating the Government's program of infrastructure renewal and recovery within disaster-affected communities, and the Authority's role will focus on working with our state and local government partners to deliver best practice expenditure of public reconstruction funds.

The Authority also monitors progress across the established lines of reconstruction and provides the required resourcing and support to maintain the momentum of reconstruction. This month the Building Line of Reconstruction has reported that all of the key tasks for the coordination, planning and implementation of the statewide rebuilding program are now complete for both 2010/11 and 2011/12 events managed by the Authority.

- The Pipeline of works now includes all events actively managed by the Authority (2009 to 2012) with an estimated program value of \$12.2 billion. The State-wide Reconciliation indicates that:
 - \$5.43 billion of works is in 'Works Delivered';
 - \$2.5 billion of works is in 'Tender Awarded or Under Construction';
 - \$599.2 million of works is in 'Tender Under Consideration'; and
 - there is approximately \$734.1 million of 'Near Term' works.
- Of the 7,803 kilometres of State controlled roads damaged during the flood and cyclones of 2010-11, 1,836 kilometres had been reconstructed, with a further 2,549 kilometres under reconstruction at 31 July 2012.
- Currently, the impact of the 2011-12 natural disaster events across Queensland is:
 - 65 Local Government Areas (LGAs) were disaster affected for Natural Disaster Relief and Recovery Arrangements (NDRRA);
 - approximately 1,400 residential properties impacted;
 - 135 Government buildings were impacted, with all 135 now repaired;
 - 10,890 kms of the State road network was affected with 9,737 kms now open or open with caution; and
 - 4,180 kms (58%) of Queensland Rail network was affected with all now recovered.
- Significant progress has been made against the six Lines of Reconstruction and key tasks outlined in Operation Queensland for the 2010-11 event period. Some reactivated key tasks as a result of the 2011-12 event period have also been completed. These include:
 - Human and social: seven key tasks are complete for 2010-11 events and three for 2011-12;
 - Economic: 20 key tasks are complete for 2010-11 events and ten key tasks complete for 2011-12;
 - Environment: ten key tasks are complete for 2010-11 events and three for 2011-12 events;
 - Building recovery: all 14 key tasks for 2010-11 are complete and all eight are complete for 2011-12 ;
 - Roads and Transport: nine key tasks for 2010-11 are complete and two for 2011-12 events; and
 - Community Liaison and Communication: five key tasks for both event periods are now complete.

I commend the report to you and recommend its release to the Minister and the public pursuant to Section 41 of the *Queensland Reconstruction Authority Act 2011*.

Yours sincerely



Graeme Newton
Chief Executive Officer
Queensland Reconstruction Authority

Contents

1.0 Framing the challenge	1
1.1 Operation Queenslander	2
Timeline of activations	3
1.2 Events managed by the Authority	4
2.0 State of the State - Progress Snapshot	5
2.1 Current status	6
3.0 State of the State - Pipeline of Works	7
3.1 State-wide Pipeline of Works	8
3.2 Program of works	9
3.3 Media reports on progress	10
4.0 State of the State - Progress by Line of Reconstruction	11
4.1 Human and Social	12
4.2 Economic	15
4.3 Environment	19
4.4 Building Recovery	21
4.5 Roads and Transport	25
4.6 Community Liaison and Communication	34
5.0 State of the State - Disaster Assistance	40
5.1 Disaster Assistance by event period - 2010/2011	41
5.2 Disaster Assistance by event period - 2011/2012	42
5.3 Queensland Disaster Assistance Framework	43
6.0 State of the State - Planning and Authority Projects	44
6.1 Planning	45
6.2 DARMsys™	47
Appendix A: Local Government Areas by Region	48



Section one: Framing the challenge

Operation Queensland, led by the Queensland Reconstruction Authority, is the State Plan that articulates Queensland's reconstruction strategy and the framework for recovery from natural disaster events since 2010/2011.

1.0 Framing the Challenge

Between November 2010 and April 2011, Queensland was struck by a series of natural disasters. Extensive flooding caused by periods of extremely heavy rainfall, destruction caused by a number of storm cells including Cyclones Tasha, Anthony and Yasi, and subsequent monsoonal flooding including in the Maranoa, have resulted in all of Queensland being declared as disaster affected.

In response to the disaster events the Queensland Government established the Queensland Reconstruction Authority (the Authority), pursuant to the Queensland Reconstruction Authority Act 2011. **The Authority's mission is to reconnect, rebuild and improve Queensland communities and its economy.**

The Authority's role was extended to cover historical and continuing disaster events in Queensland. The natural disaster events that led to the creation of the Authority, and the events that the Authority has since been charged with managing are summarised on the following page.

1.1 Operation Queenslander

The activities of the Authority will occur under the auspices of a comprehensive and integrated State Community, Economic and Environmental Recovery and Reconstruction Plan, also known as **Operation Queenslander** (the State Plan or Plan). This Plan outlines a roadmap, based on six lines of reconstruction, that provides strategic level guidance to reinforce the recovery work that has already begun and sets the framework for rebuilding a more resilient Queensland.

The Authority is responsible for providing central coordination, control, funding and reporting across these activities. Responsibility for delivery will be decentralised across responsible agencies aligned with the six lines of reconstruction.

The Lines of Reconstruction will continue to evaluate the key tasks for the natural disasters managed by the Authority, whilst concurrently responding to current and emerging events designated to be managed by the Authority.

The six lines of reconstruction and the Department or Agency with primary responsibility for each are outlined below.

Line of Reconstruction	Primary Responsibility
Human and Social - to restore and strengthen local human services and community capacity through provision of direct assistance individuals and communities, and supporting communities to drive and participate in their own recovery	Department of Communities, Child Safety and Disability Services (DCCSDS)
Economic - to set the conditions to facilitate the rapid restoration of a competitive, sustainable Queensland economy	Department of State Development, Infrastructure and Planning (DSDIP)
Environment - to recover and conserve disaster-affected terrestrial and marine natural resources and ensure that reconstruction activities do not cause environmental harm	Department of Environment and Heritage Protection (DEHP)
Building Recovery - to lead and coordinate the planning and implementation of all statewide building reconstruction functions	Department of Housing and Public Works (DHPW)
Roads and Transport - to manage the recovery and reconstruction of Queensland's integrated transport environment in order to reconnect Queensland communities and economies	Department of Transport and Main Roads (DTMR)
Community Liaison and Communication - to gain and maintain the confidence of Queenslanders in the reconstruction effort, by providing a regular and consistent source of coordinated public information	Department of the Premier and Cabinet (DPC)

2010/2011 events managed by the Authority

2011/2012 events managed by the Authority



Old flooding TC Anthony V30 - November 2010 - February 2011



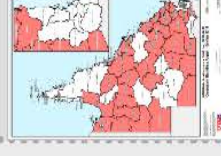
Severe Tropical Cyclone Yasi V22 - 2 February 2011 - March 2011



Qld Monsoonal Flooding V6 - 28 February 2011 - March 2011



South West Flooding V3 - April 2011



Queensland Bushfires V5 - August - October 2011



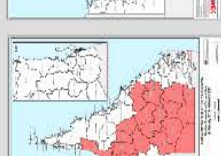
Localised Heavy Rainfall Northern Queensland V1 - October 2011



Southern Queensland Flooding V3 - November - December 2011



South East Queensland Heavy Rainfall and flooding V2 - 23-26 January 2012



Western Queensland Tropical Low V12 - 27 January - February 2012



Far-Northern Queensland Tropical Low V4 - 3-4 February 2012



North Coast Storms and flooding & East Coast Hybrid Low V7 - 24 February - 7 March 2012



Northern & Far Northern Queensland Heavy Rainfall & Flooding V10 - 15 March 2012



East Coast Low V2 - 22 March 2012

Nov

Dec

Jan

Feb

Mar

Apr

May

Jun

Jul

Aug

Sept

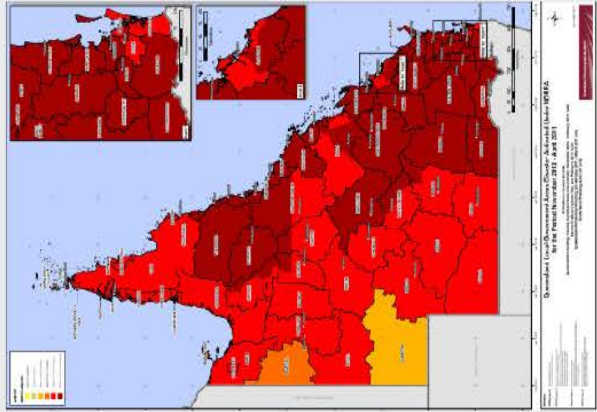
Oct

Nov

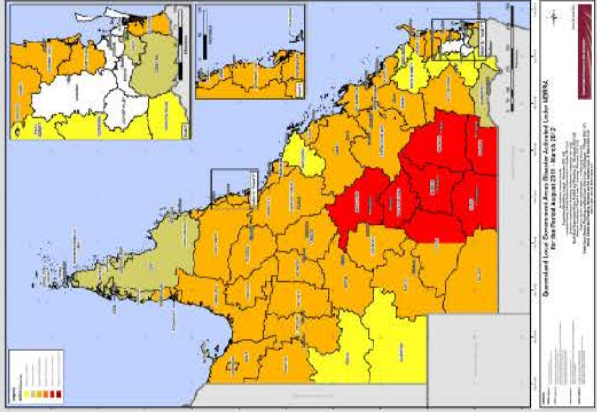
2010

2011

2012



2010-2011 events managed by the Authority (at May 2012)



2011-2012 events managed by the Authority (at 30 June 2012)

1.2 Events managed by the Authority

2011-2012 natural disaster events managed by the Authority:

- Queensland Bushfires, August to October 2011
- Localised Heavy Rainfall Northern Queensland, October 2011
- Southern Queensland Flooding, November to December 2011
- South East Queensland Heavy Rainfall and flooding, 23-26 January 2012
- Western Queensland Tropical Low, 27 January to February 2012
- Far Northern Queensland Tropical Low, 3-4 February 2012
- North Coast Queensland Storms and flooding and East Coast Hybrid Low, 24 February - 7 March 2012
- Northern and Far Northern Queensland Heavy Rainfall & flooding, 15 March 2012
- East Coast Low, 22 March 2012

2010-2011 natural disaster events managed by the Authority:

- Queensland Flooding and Tropical Cyclones Tasha and Anthony, November 2010 to February 2011
- Severe Tropical Cyclone Yasi on 2 February 2011
- Queensland Monsoonal Flooding Event on 28 February 2011,
- South West Flooding, April 2011

Pre 2010-2011 events managed by the Authority:

- South East and North Coast Queensland East Coast Low, August 2007
- Central and Southern Queensland storms, October 2007
- South West Queensland storms and flooding, 23-30 November 2007
- Central Western Queensland storms and flooding, December 2007
- South East Queensland East Coast Low, December 2007 - January 2008
- Queensland Monsoonal flooding, January 2008
- Queensland Monsoonal flooding, February - March 2008
- South East and Western Queensland storms and flooding, 3-8 February 2008
- South East Queensland storms, 29 May - 2 June 2008
- South West Queensland flooding, June 2008
- Queensland storms and associated flooding, 16-22 November 2008
- Baralaba storms, 7 December 2008
- Queensland Monsoonal flooding and Tropical Cyclone Charlotte and Ellie, January - February 2009
- Tara storms, 15 February 2009
- Tropical Cyclone Hamish, 5-11 March 2009
- Sunshine Coast, Gympie and Fraser Coast flooding, April 2009
- South East Queensland Low, May 2009
- Queensland Bushfires, September – October 2009
- South West Flooding, 20 – 25 November 2009
- Northern, Central and South West Queensland Flooding, 22 December 2009 to 8 January 2010
- Queensland Monsoonal Flooding and Tropical Cyclones Olga, Neville, Ului and Paul, January to April 2010
- 2010 South East Queensland Flooding, 9-12 October 2010
- South West Queensland Low and Associated Flooding, September 2010



Section two:
State of the State - Progress Snapshot

2.1 Current Status

During the period 1 July 2011 to 30 June 2012, there were a total of nine activations for Commonwealth and State Natural Disaster Relief and Recovery Arrangements (NDRRA), involving 65 of Queensland's 73 Local Government Authorities (LGAs). At 30 June 2012, 65 of the 73 LGAs in Queensland remained activated, while eight (8) LGAs had not been affected during the disaster period. There have been no new activations since 30 June 2012.

During the 2010/2011 (November 2010 - 30 June 2011) disaster event period, there were four (4) events with 105 activations across Queensland's 73 LGAs. *See Figure 2.1*

During the 2011/2012 (1 July 2011 - 30 June 2012) disaster event period, there were nine (9) events with 124 activations across 65 affected LGA's. *See Figure 2.2.*

Fig. 2.1 Number of LGA's impacted by event - 2010/2011 events

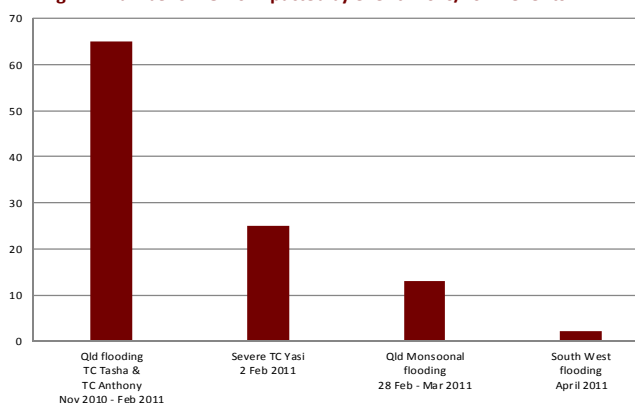
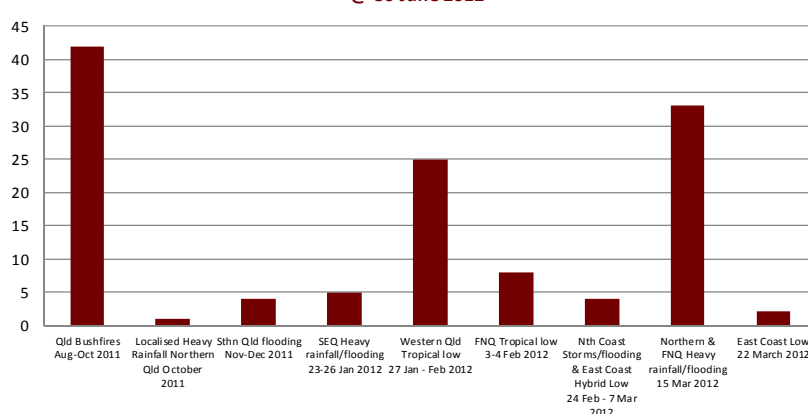


Fig. 2.2 Number of LGA's impacted by event - 2011/2012 events @ 30 June 2012



Scale of Impact	2010/2011 Events	2011/2012 Events
LGA's disaster activated	73	65
Residential properties affected	136,000	1,400
State road network affected (kms)	20,610	10,890
State rail network affected (kms)	4,748	4,180
Schools affected	411	7
Other government buildings affected	4,381	135
Homes and businesses without power	480,000	9,000
National parks affected	162	22
Insurance - claims (Source: ICA 28 March 2012)	131,935	6,408
Insurance - Estimated reserve value	\$3,780M	\$124.7M



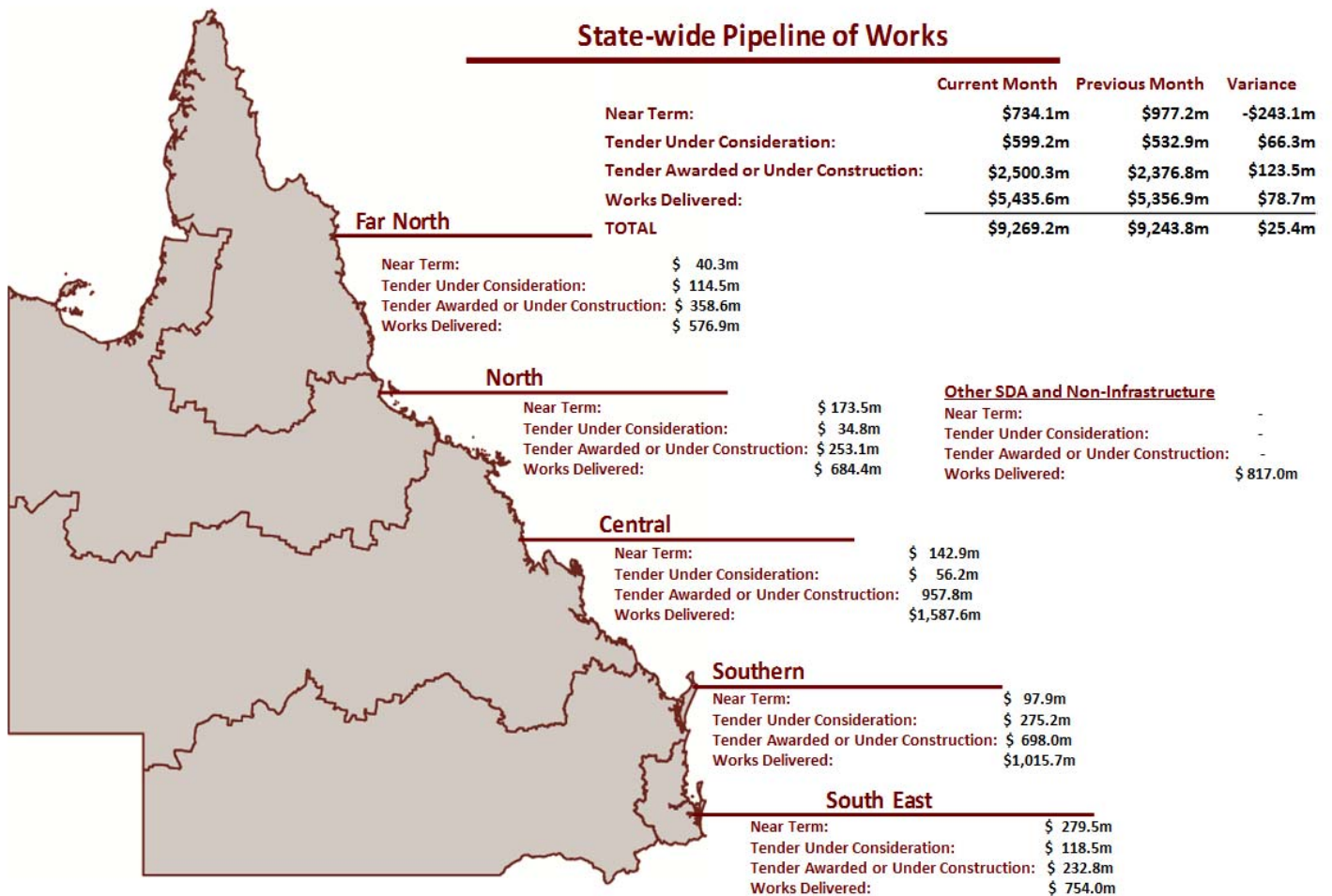
Section three:
State of the State - Pipeline of Works

3.1 State-wide Pipeline of Works

The Pipeline of works includes all events actively managed by the Authority (2009 to 2012) with an estimated program value of \$12.2 billion. Previous versions of the pipeline were based on 2010/11 events only (\$7.5 billion estimate).

The State-wide reconciliation indicates that:

- \$5.43 billion of works is in 'Works Delivered';
- \$2.5 billion of works is in 'Tender Awarded or Under Construction';
- \$599.2 million of works is in 'Tender Under Consideration'; and
- there is approximately \$734.1 million of 'Near Term' works.



(Source: the Authority: September 2012)

1. The pipeline now represents all open 2009-2012 events with a cumulative value of \$12.2 billion. Previous versions of the pipeline only included the 2010/11 program of \$7.5 billion.
2. Additional works may have been conducted but are yet to be reported to the Authority
3. Other SDA and non-infrastructure encompasses SDAs other than DTMR and non-infrastructure NDRRA grants received by the Authority.

Pipeline of Works - Program Stage Description

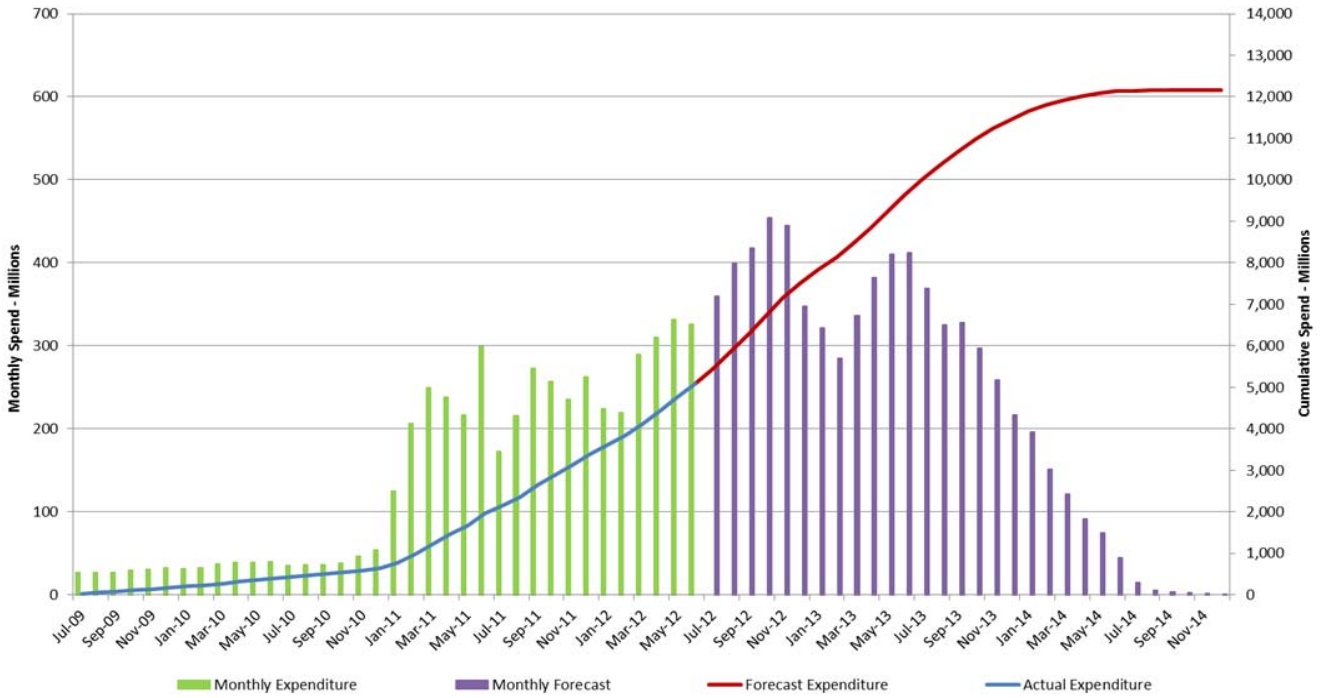
	DTMR	LGA
Near Term	Packages being prepared for tender	Applications for packages which are currently under assessment by the Authority or are awaiting additional information from the LGA
Tender Under consideration	Packages in tender process	Applications for packages which have been approved by the Authority and are in the tender or contract process.
Tender Awarded / Under Construction	Packages assessed and tender awarded, and packages under construction	Applications for packages which have been approved by the Authority and have a tender awarded or are under construction.
Works Delivered	Expenditure on packages in delivery or completed.	Expenditure on packages in delivery or completed.

3.2 Program of works

Combined Program of Works (Updated Quarterly)

The figure below represents the monthly expenditure and estimated costs for all events managed by the Authority.

Figure 3.2 Combined Program of Works



Source: the Authority: June 2012 Quarterly Review

Timing

The focus of the reconstruction effort is now shifting from approving submissions to ensuring project delivery, with the bulk of reconstruction work occurring over the next 18 months.



Mar-11	Jun-11	Sep-11	Dec-11	Mar-12	Jun-12	Sep-12	Dec-12	Mar-13	Jun-13	Sep-13	Dec-13	Mar-14	Jun-14
Establishment & Mobilisation													
QRA mobilisation													
Submission Preparation 2010/11						2011/12							
Assessment and approval						2011/12							
Project Delivery													
Progress payments - program monitoring and reporting													
Project Completion													
Acquittal and close out													

Source: the Authority at May 2012

3.3 Media Reports

Weekend Post, Cairns – 25 August 2012

Jetty repairs a sign of recovery

THE long-awaited reconstruction of two riverside restaurants in one town shows signs of life.

The Clack Island and Clump Point Arks, owned by Clive and Susan, are expected to be reopened by the end of the year. The Clack Island Arks, which were destroyed by the 2011 floods, are now under construction. The Clack Island Arks will be a new addition to the town's riverside dining scene. A stronger and wider pier will be built at Clump Point, making a concrete deck, stairs and hand railings.

LIAM PARSONS
personal@lparsons.com.au

Shannon said the work had been eagerly awaited by local visitors. "The river is a big part of our town's identity and we are excited to see the Arks back in business," he said. "The Clack Island Arks are a great addition to the town's riverside dining scene and we are excited to see them back in business."

Rural Weekly insert, Toowoomba – 10 August 2012

QCWA doors reopen after '11 floods

IT WAS a momentous occasion for the Queensland Country Women's Association's Goulburne Arks branch last weekend when it reopened its doors following extensive flood damage last year.

The majority of contents from the branch's building were destroyed, including old photo albums and other irreplaceable memorabilia.

But thanks to the help of generous donors, funds and help from members and the community, the building has been refurbished and new white goods and catering equipment have replaced those destroyed.

"The members are very proud and pleased with how everything has turned out," Marianne division president Marie Keys said.

ALL SMILES: Members of the Goulburne Arks Country Women's Association branch in their new kitchen are Alison Topp, Helen Clarke, Sharon Tilly and Amy Dunn.

PHOTO CONTRIBUTED

Townsville Sun – 15 August 2012

Flood of repairs

THE building is a sign of recovery for the town.

The building is a sign of recovery for the town.

Queensland Times, Ipswich – 01 August 2012

Flooding clean-up in

Flood rebuilding is on track for an early end

REPAIRS TO the flood-damaged Boree Point park are well advanced, and the park is expected to be reopened to the public by the end of the year.

The park, which was completely underwater for 20m during the 2011 floods, is now being rebuilt. The park is a popular spot for families and is expected to be a great addition to the town's recreational facilities.

Queensland Times, Ipswich QLD – 27 August 2012

Boree Point park rebuilt after being under 20m of water

Families flock to see park fixed after flood

A BOREE POINT park which was under 20m of water during the 2011 floods has been rebuilt and is now open to the public.

The park, which was completely underwater for 20m during the 2011 floods, is now being rebuilt. The park is a popular spot for families and is expected to be a great addition to the town's recreational facilities.

Herbert River Express, Ingham – 22 August 2012

Forging ahead

THE park is a sign of recovery for the town.

The park is a sign of recovery for the town.

Queensland Times, Ipswich – 27 August 2012



PLATEAU: Sarah Rose and Theo Rose check out the new look Boree Point Park, which has been under construction since being damaged by last year's floods.

Daily News, Warwick QLD – 24 August 2012

\$2.23m flood repairs commence

FLOOD repairs to the tune of \$2.23 million have started on the Texas-McLellan Rd near Condamine.

The works will include the reconstruction of the road, the installation of drainage systems and the repair of the surrounding infrastructure.

Gympie Times – 18 August 2012

Authority assessors check on flood restoration work

QUEENSLAND Reconstruction Authority assessors have checked on flood restoration work in the Gympie region.

The assessors are checking on the progress of the restoration work and ensuring that the work is being completed to the required standards.

Weekend Post, Cairns – 25 August 2012

Flood reconstruction work on track in Somerset region

SOMERSET REGIONAL COUNCIL assesses progress on flood reconstruction work in the Somerset region.

The council is pleased with the progress of the reconstruction work and expects the region to be fully operational by the end of the year.



Section four: State of the State - Progress by Line of Reconstruction

Operation Queensland is centred along six lines of reconstruction: Human and Social, Economic, Environment, Building Recovery, Roads and Transport and Community Liaison and Communication. *Operation Queensland* identifies key milestones against which reconstruction progress is measured. Each line of reconstruction sub-committee developed an Implementation Plan to support the achievement of each of these key milestones. This section reports the progress made across these lines of reconstruction and includes a summary of quantitative performance indicators.

4. Situational Report: Lines of Reconstruction

4.1 Human and Social

The objective of the human and social line of reconstruction is to assist individuals and communities to recover from the effects of the disasters.

Human and social		2010/2011 Events	2011/2012 Events	Current Status ¹
LGA's disaster activated	No. of LGAs affected	73	65	73
Educational facilities <i>(Source: DH&PW - 30 June 2012)</i>	Schools affected	411	7	418
	Schools fully repaired	411	7	418
Personal Hardship Assistance Scheme (PHAS) <i>(Source: DCCSDS - 01 August 2012)</i>	Amount paid	\$44.17M	\$3.16M	\$47.33M
	Claims granted	67,756	5,922	73,678
Australian Government Disaster Recovery Payments (AGDRP) <i>(Source: Centrelink - 13 January 2012)</i>	Amount paid	\$775.5M	-	\$776M
	Claims granted	673,480	-	673,480
Disaster Income Recovery Subsidies (DIRS) <i>(Source: Centrelink - 9 December 2011)</i>	Amount paid	\$69.5M	-	\$69.5M
	Claims granted	59,129	-	59,129
Charities and Non-Profit Groups <i>(Source: QRAA - 28 June 2012)</i>	Amount paid	\$4.64M	\$0.193M	\$4.83M

¹ Status indicates the current total impact on reported metrics for both disaster event periods.

The current state of activity:

Through the Mental Health Disaster Recovery Package (funded by the Commonwealth Government and Queensland Government through the NDRRA), community-based non-government organisations are available to assist disaster-affected individuals, carers, families and communities with emotional wellbeing and mental health support services.

At 31 July 2012, the funded organisations have:

- reported 19,956 contacts for advice, information, and referral;
- provided 2,863 people with one or more individual counselling sessions; and
- held 2,889 group sessions with a total attendance of 27,441 people.

Through the NDRRA funded Financial Counselling Program, non-government organisations are available to assist disaster-affected individuals and families with financial counselling services. At end July 2012, the funded organisations have provided a total of 27,541.8 hours of direct support to 26,217 new clients who are specifically disaster affected.

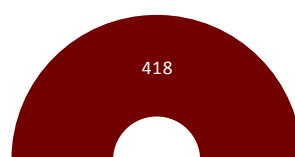
At 1 August 2012, 73,678 Personal Hardship Assistance Scheme (PHAS) claims had been granted amounting to \$47.33 million.

(Source: DCCSDS - 31 July 2012)

The Premier's Disaster Relief Appeal was re-activated to assist people affected by flooding in the Balonne, Central Highlands, Murweh and Maranoa local government areas in February 2012.

The Australian Red Cross administers the fund and decisions are made by a Distribution Committee with representatives from the Department of the Premier and Cabinet, Red Cross and Mission Australia. In total, \$4.69 million was donated and 528 applications have been received (applications closed on 4 May 2012). A first round of payments was made in April 2012 with \$2.602 million allocated. Payment of the second round has been completed and distribution of the remaining funds finalised.

Figure 4.1 Schools affected (2010/2011 & 2011/2012 events combined)



■ Repaired ■ Requiring further repairs

(Source: DPW - 31 May 2012)

Of the seven (7) schools affected by the 2011-2012 events, all have been fully repaired and are operating from their original location. The total number of schools affected for both events is 418 as shown in **Figure 4.1**.

Human and Social Line of Reconstruction Case example Moonie State School Mural - Western Downs

Moonie is a small rural community on the outer fringes of the Western Downs.

In 2010/11 many properties around Moonie suffered extended periods of isolation a number of times.

In close consultation with the Moonie State School P&C, the Western Downs Community Development Officer (position funded through the Community Development Engagement Initiative) developed a proposal for the school children to create a mural reflecting on their experience and interpretation of the flood events.

A disused water tank was chosen as the canvas for the mural and community volunteers water blasted and prepared the tank.

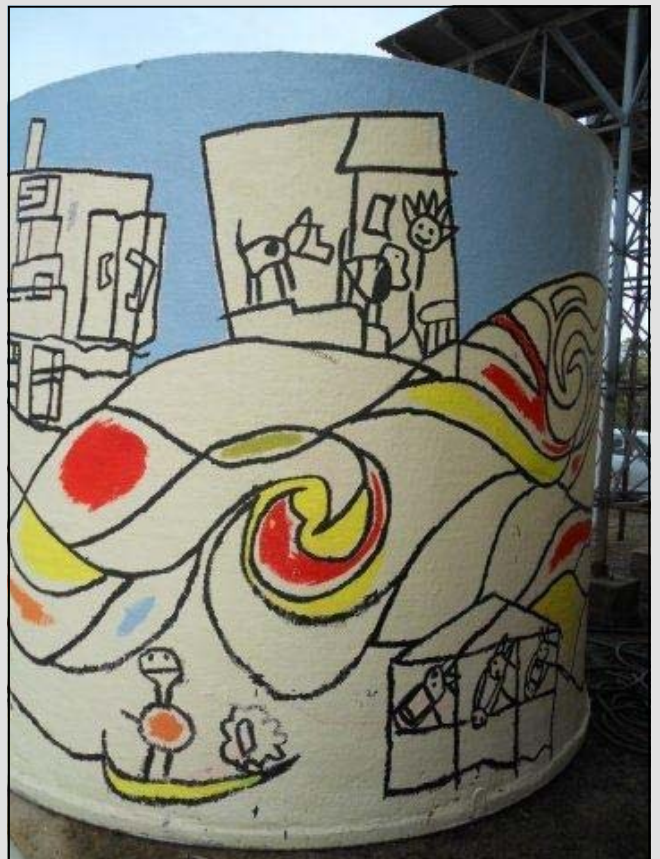
Marge Power, a well respected artist with a teaching background, was engaged to help develop the mural using funds made available by the Flexible Funding Package. She ran two workshops with the children and some parents to develop their ideas. She then produced a concept board which was displayed at the Moonie State School's 50th Birthday Celebrations.

Over 500 people attended the 50th Celebrations. The SES and local fire brigade had displays and distributed disaster preparedness materials. Following display of the concept board at the 50th Celebrations the mural was completed by the pupils, with Marge's assistance. A workshop on maintenance was also provided.

The community response to the mural was overwhelmingly positive. There was amusement at the depiction of yabbies climbing up wheat stalks and interest in how the helicopters, which the children had seen only on TV, were such a memorable part of their experience of the floods.



Above: Moonie State School pupil works on the Mural



Above: completed Moonie State School Mural

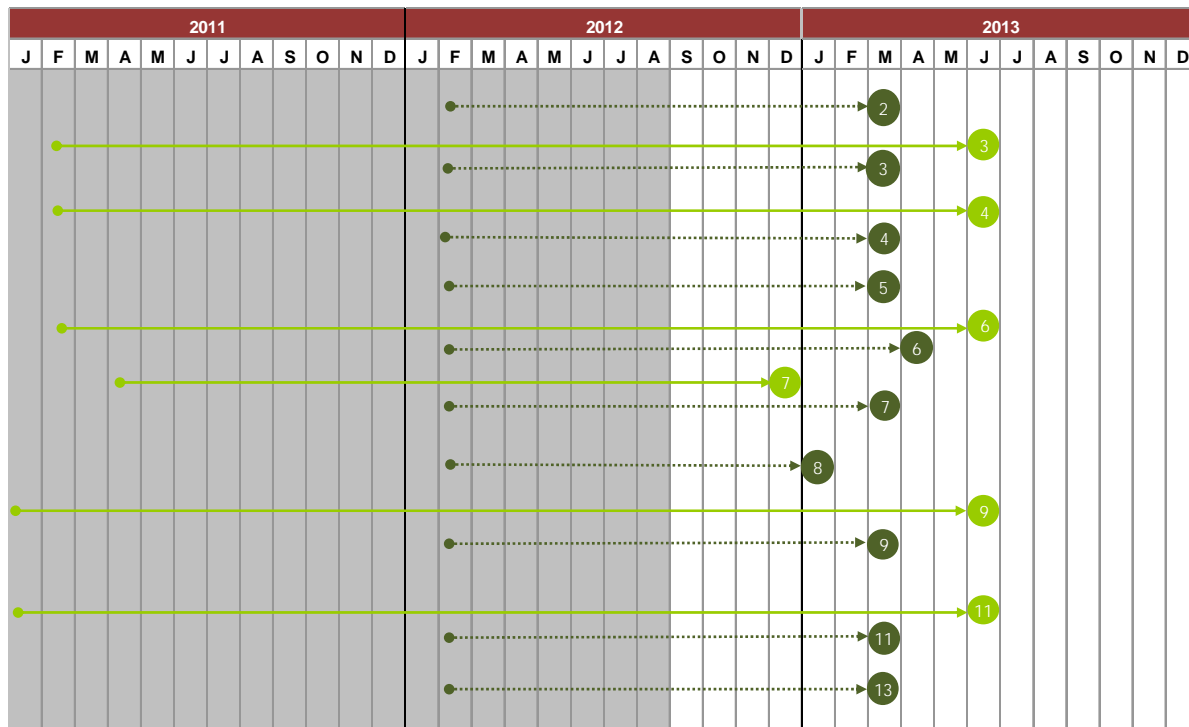
(Article courtesy Department of Communities, Child Safety & Disability Services - September 2012)

Human and Social - progress of remaining key tasks against Implementation Plan

The progression of key tasks against the Implementation Plan for the Human and Social Line of Reconstruction was updated during the annual review process for Operation Queensland Update 2011-2013. Key tasks that have been reactivated in response to the current and emerging natural disaster events of 27 January - February 2012 are indicated with dark green markers.

2010/2011 events managed by the Authority - At 31 August 2012, seven key tasks are complete with the six remaining key tasks on track to be completed within the proposed timeframes.

2011/2012 events managed by the Authority - At 31 August 2012, three key tasks are complete and ten of the remaining reactivated activities are on track to be completed within proposed timeframes.



- 1 Light green - key task that is progressing satisfactorily
- 2 Dark green - reactivated key task or similar activity as a result of current or emerging events
- 3 Hollow markers - timeframe by which a key task was previously expected to be completed
- 4 Arrows indicate a key task is undertaken on an ongoing basis

2010/2011 events managed by the Authority

Remaining key tasks:	
3	Provide public information and advice on community and public health issues
4	Contribute to a reconstruction communication strategy to manage community expectation and inform communities
6	Provide community development support, including community engagement and capacity building activities
7	Support the development and implementation of both cross-cutting planning and local community, economic and environmental recovery and reconstruction plans
9	Connect displaced householders to housing assistance and support mechanisms
11	Provide additional services including counselling, personal support and specialised mental health services

2011/2012 events managed by the Authority (shown in dark green)

Remaining reactivated key tasks	
2	Activate and process emergency assistance payments, Natural Disaster Relief and Recovery Arrangements (NDRRA) grants and other relevant sources of relief
3	Provide public information and advice on community and public health issues
4	Contribute to a reconstruction communication strategy to manage community expectation and inform communities
5	In conjunction with Queensland Treasury, seek federal and state funding for additional costs associated with disaster related service delivery
6	Provide community development support, including community engagement and capacity building activities
7	Support the development and implementation of both cross-cutting planning and local community, economic and environmental recovery and reconstruction plans
8	Transition local health, social, education and community services to normal
9	Connect displaced householders to housing assistance and support mechanisms
11	Provide additional services including counselling, personal support and specialised mental health services
13	Develop subordinate implementation plans to achieve key tasks at project level

4.2 Economic

The economic line of reconstruction focuses on returning businesses back to operation and growing these businesses and improving economic conditions overall across the State.

Economic		2010/2011 Events	2011/2012 Events			
NDRRA Small business grants & loans <i>(Source: QRAA - 30 August 2012)</i>	Amount paid	\$85.81M	\$1.00M			
	Claims granted	5,674	99			
NDRRA Primary producers grants & loans <i>(Source: QRAA - 30 August 2012)</i>	Amount paid	\$214.81M	\$7.94M			
	Claims granted	10,043	667			
Coal exports <i>(Source: DSDIP - 30 August 2012)</i>	Jul-11	12.05 Mt				
	Jul-12	12.65 Mt				
	Total for 2010-11	162.6Mt				
	Total for 2011-12	164.9 Mt				
	Forecast Total for 2012-13	177Mt				
Primary Industry Estimate of Gross Value of Production (GVP) <i>(Source: DSDIP - Prospects update March 2012)</i>	Annual forecasts at	2009/10	2010/11	Sep-11	Mar-12	
	Grain sorghum	\$155M	\$320M	\$313M	\$291M	
	Cotton (raw)	\$355M	\$660M	\$872M	\$930M	
	Fruit & vegetable	\$2,208M	\$2,146M	\$2,365M	\$2,362M	
	Sugarcane	\$1,425M	\$940M	\$1,218M	\$1,150M	
Employment - Full-time labour force <i>(Source: ABS - 30 August 2012)</i>	Jul-11 ('000)	2,337				
	Jul-12 ('000)	2,334				

GVP is an estimate of production based on data forecasts received from industry representatives, statistical information, weather forecasts and market conditions including price. Initial forecasts for the current financial year are published in September. These forecasts are then reviewed during the year and adjusted in March.

The current state of activity:

Natural Disaster Relief and Recovery Arrangements (NDRRA) Category C assistance for those affected by the 2011 floods, Cyclone Yasi and the 2012 flooding in South West Queensland, was extended to 31 October 2012 due to wet conditions over 2011-12 further delaying work. NDRAA Category B and D assistance programs ended on 30 June 2012.

At 23 August 2012, the NDRRA program (jointly funded by the Commonwealth and State governments) had approved assistance to 16,483 small businesses and primary producers, to a maximum value of \$309.56 million.

Western Queensland Tropical Low, 27 Jan-Feb 2012:

NDRRA Category B and Category C assistance has been activated in Balonne, Barcaldine, Blackall-Tambo, Maranoa, Murweh, Paroo and Quilpie (specified area) Shires.

At 30 August 2012, Category B Loans approved:

- \$0.25 million to 1 small business
- \$0.34 million to 3 primary producers

At 30 August 2012, Category C recovery grants approved:

- \$7.85 million to 669 primary producers
- \$1.04 million to 101 small businesses
- \$0.32 million to 31 not for profit organisations.

On 15 February 2012, the Flood and Cyclone Recovery Business program was reactivated to assist businesses that have been directly and indirectly affected by the Western Queensland Tropical Low event. At 22 August 2012, nine businesses employing 58 staff have been approved into the program.

Employment - Queensland's trend employment fell for the sixth consecutive month, down 0.1% in July 2012. Trend employment in Queensland declined 5,900 persons over the year.

4.2 Economic (Continued)

Statewide Status

Mining - In 2011-12, annual coal exports totalled 164.88Mt (1.4% higher than that achieved in 2010-11).

In July 2012, exports totalled 12.65Mt (a 7.3% decrease on June 2012 and 0.5% higher than the result achieved in July 2011).

During 2011-12 coal demand remained weak, primarily due to the continuing slowdown in world economic growth flowing from the European debt crisis, tighter monetary policy and lower growth in steel production in China, and slower economic growth in India.

During 2011-12 premium hard coking coal prices declined by 36%. Annual contract thermal coal prices declined by 11.3%.

Recent increased stimulus measures by China are expected to see a modest increase in demand for metallurgical coal towards the end of 2012.

During July, spot thermal coal prices (coal for short-term delivery) stabilized at around US\$88/tonne as Japanese, Korean and Taiwanese buyers were more active in the market for Australian thermal coal. Current forecast for 2012-13 Queensland coal exports is 177Mt, a 7.4% increase on 2011-12.

(Source: DTMR 14 August 2012)

Agriculture - Next update will be provided after the release of the main edition of 'Prospects' in September 2012.

Grain Sorghum - An 11 per cent fall in sorghum price per tonne coupled with a 12% fall in production, mainly from a significantly smaller than expected central Queensland crop, has caused the sorghum GVP to fall below the previous September forecast.

Cotton - Before the February floods, Queensland's cotton crop was expected to be one of the best on record, significantly greater than the initial September forecast of \$872 million. However, while the GVP is expected to be higher than the September forecast, some of the anticipated increased production is expected to be lost due to the flooding in the St George – Dirranbandi and Central Highlands regions.

Fruit and Vegetable - Whilst the forecast total fruit and vegetable production in 2011-12 remains stable since the September 2011 estimate, a number of crops have been affected by weather.

Macadamia production in 2011 was lower than initial forecasts, with the wet and overcast summer leading to reduced nut development and heavy husk spot damage.

Fruit and vegetable (cont'd) - This reduced yields and quality. In 2012, yields are expected to recover as weather conditions improve. Similarly, initial forecasts for Murcott Mandarin production were not achieved, largely due to the wet weather, which led to an increase in fungal diseases.

Sugarcane - The high percentage of standover cane significantly affected sugarcane yields for the 2011 sugarcane crop, with the industry experiencing a second successive year below 28 million tonnes. Queensland's sugarcane crop was reduced from an expected 28 million tonnes to 26.35 million tonnes. Reduced sugarcane production yields due to back-to-back years of poor weather have had, and will continue to have, a material impact on sugarcane volume.

Sugar prices have also slightly dipped compared to those forecast in September 2011. Queensland Sugar Limited's 2011 indicative seasonal pool price was \$495 to \$525 on 13 February 2012, against the \$495 to \$560 expected on 1 September 2011.

Tourism - In the Mission Beach region, tourists are returning and there is investment in tourism businesses including the purchase of the Dunk and Bedarra Island Resorts.

Reconstruction of the jetties at Clump Point and Dunk Island, and re-opening of public use areas on Dunk Island, continue to be a focus for government.

\$325,000 in funding under the Natural Disaster Relief and Recovery Arrangements (NDRRA) has been fast-tracked to enable the re-establishment of infrastructure at the Spit on Dunk Island for day use visitors. Works to reconnect sewage, water and electricity services on the Spit have now been completed, allowing efforts to focus on restoring the camping area and walking tracks.

A working group involving the Dunk Island Resort, Cassowary Coast Regional Council, and Queensland Parks and Wildlife Service has been established to coordinate restoration. It is hoped the camping area could be opened by September 2012.

\$5.5 million was allocated to rebuild the Dunk Island and Clump Point jetties as part of the NDRRA Cassowary Coast Support Package. The Department of Transport and Main Roads is assisting the Cassowary Coast Regional Council and Queensland Reconstruction Authority to progress this project. The successful tenderer for design and construction of the new jetties is expected to be announced by the council in the near future, with construction scheduled for completion in 2013.

The Federal Government has also committed \$5.5 million towards a safe anchorage at Mission Beach. Queensland Government is currently considering options for the most effective way to utilise the Commonwealth Government's commitment.

(Source: DSDIP 31 August 2012)

Economic Line of Reconstruction Case example

Flood and Cyclone Recovery Business Program - The Rocklea Group case study

The Queensland Government aids flood recovery at diesel shop

On Wednesday 12 January 2011, the directors of The Rocklea Group were forced to evacuate their premises as the suburb had been inundated with flood waters.

Walter Urbancic and Susan and David Stollznow arrived at the workshop on Friday morning to find that although flood waters had started to recede, a thick layer of mud covered the workshop floor and had caused extensive damage to equipment and fixtures. The owners were devastated, however Queensland's community spirit convinced them to battle through the difficult times ahead.

The impediments to getting back to business were significant, including loss of power and phones and uninhabitable offices. The repair bill amounted to \$300,000 as mud and oil covered everything on the property. Many tools were either destroyed or in need of significant repair.

In the days and weeks following the flood, The Rocklea Group was overwhelmed with assistance from 70-80 volunteers. However, the recovery effort was not yet over. It was timely that Walter was invited to take part in the Queensland Government's 'Cash flow out of crisis' breakfast seminar, which highlighted the challenges facing organisations in the flood recovery effort.

After the seminar, Walter was introduced to a series of business support programs provided collaboratively by the Queensland Government. The Rocklea Group undertook the 'Queensland Made to Last' initiative, delivered by QMI Solutions to assist manufacturers affected by the floods and Cyclone Yasi. The program paired businesses with experienced manufacturing consultants to provide them with a business counselling service and workshops for a thorough operational check up.

The workshops provided a strategic focus on manufacturing principles to improve company performance. Workshops also covered operational improvements of its processes. The lean manufacturing workshop demonstrated the potential benefits of implementing world-class manufacturing practices.

The Rocklea Group also participated in the Queensland Government Flood and Cyclone Recovery and Jobs Assist programs which were designed to help businesses impacted by natural disasters to recover and position themselves for future growth.

Through the program, the company learnt of practical solutions that other businesses had used in similar situations in the past.

For the company directors, the programs supported innovative thinking and showed them how to achieve measureable results in profitability and productivity. Their staff were also inspired by the change, going above and beyond to ensure the business flourished.



Above: The Rocklea Group was one of many businesses affected by the 2011 floods

The programs helped The Rocklea Group achieve:

- a comprehensive business review;
- improved strategic plan;
- targeted business continuity plan;
- Development of a Brisbane City Council Green Licence Pollution Prevention Plan, and
- renewed confidence to consider and use external expertise.

The Rocklea Group returned their business to full operations only six months after the floods with the help of the Queensland community and the Queensland Government's Business Support programs.

On 12 January 2012, the company commemorated the 12 month anniversary of the floods with a flag-raising ceremony - an event televised by Channel 7 to demonstrate the courage, resilience and strength in adversity of Queensland's small businesses.

The Rocklea Group are now looking at opportunities within the resources sector with the help of the Queensland Government.

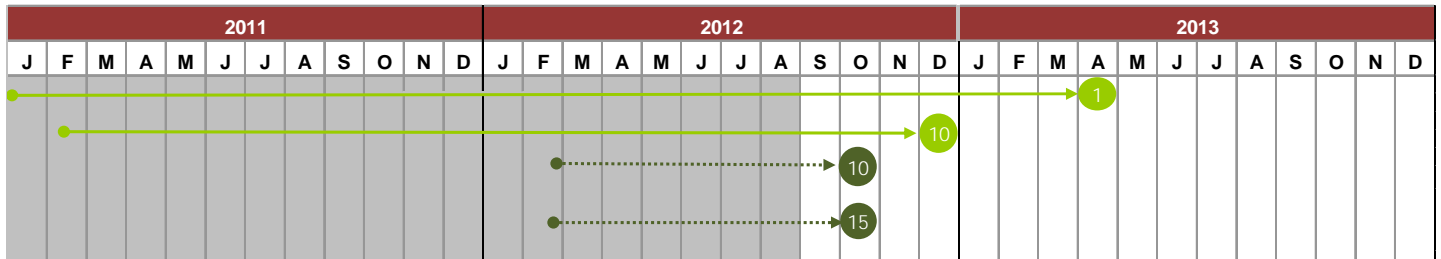
(Article courtesy DSDIP 3 September 2012)

Economic - progress of remaining key tasks against Implementation Plan

The progression of key tasks against the Implementation Plan for the Economic Line of Reconstruction was updated during the annual review process for Operation Queensland Update 2011-2013. Key tasks that have been reactivated in response to the natural disaster events of 27 January-February 2012 are indicated with dark green markers.

2010/2011 events managed by the Authority - At 31 August 2012, 20 key tasks are now completed and the remaining 2 key tasks are still on track for completion at the estimated timeframes.

2011/2012 events managed by the Authority - At 31 August 2012, 10 key tasks are now complete. The remaining two key tasks are on track for completion in October 2012.



- 1 Light green - key task that is progressing satisfactorily
- 1 Dark green - reactivated key task or similar activity as a result of current or emerging events
- Hollow markers - timeframe by which a key task was previously expected to be completed
- Arrows indicate a key task is undertaken on an ongoing basis

2010/2011 events managed by the Authority

2011/2012 events managed by the Authority (shown in dark green)

Remaining key tasks:		Remaining reactivated key tasks	
1	Rapid restoration of a competitive and sustainable Queensland economy	10	Advise on Natural Disaster Relief and Recovery Arrangements (NDRRA) measures
10	Advise on Natural Disaster Relief and Recovery Arrangements (NDRRA) measures	15	Provide systemic, sectoral support by establishing partnerships with industry bodies

4.3 Environment

The Environment Line of Reconstruction is focused on recovering and conserving natural resources and related infrastructure affected by the Queensland flood and cyclone disasters and making sure recovery and reconstruction efforts do not impact the State's natural resources. The Environmental Line of Reconstruction is now reporting quarterly there is no update on last reports information.

Environment		2010/2011 Events	2011/2012 Events	Current Status ¹
National parks <i>(Source: EHP 13 August 2012)</i>	Affected	162	22	184
	Partially/fully open	162	22	184
	Remain Closed	0	0	0
Sewerage and water schemes <i>(Source: EHP 21 June 2012)</i>	Affected	188	3	191
	Operating (needing permanent repairs)	15	0	15
Streamflow gauges <i>TASK COMPLETED - March 2012</i>	Affected	40	4	44
	Repaired and operational	39*	4	43

¹ The status indicates current total impact on reported metrics for both disaster event periods. # 5 parks have partially opened and 10 have been reopened fully.

* Two sites were amalgamated and replaced by a single site. All gauging stations are now operational.

All work related to non-mining industry related Transitional Environmental Programs (TEPs) issued as a result of the 2010-11 disasters are now finalised. Following a review of development application conditions, standards and guidelines, new guidelines were developed relating to the regulation of sewage pump stations and incident/overflow notification.

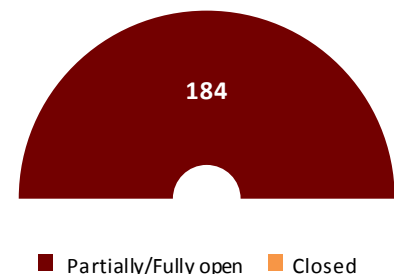
The current state of activity:

- National Parks – At 13 August 2012, all National Parks impacted by the 2010/11 events are open. All National Parks impacted by the 2012 flood events are open. **See Figure 4.3.**

Restoration of damaged national parks as a result of the 2010-11 events is now 56% complete. **Figure 4.4** represents progress against the work plan.

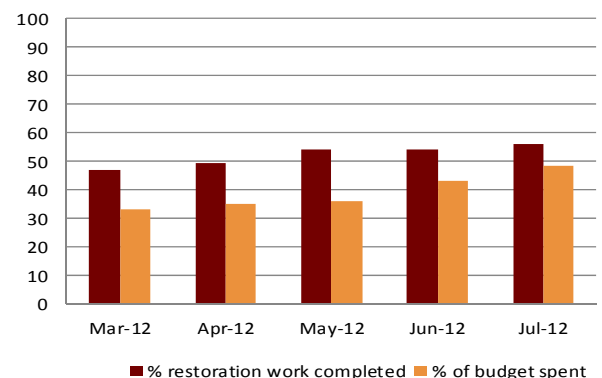
- Sewerage and Water Infrastructure – All water supply and sewerage schemes damaged by either 2010-11 or 2011 - 12 events are now operational. Seven water supply schemes and eight impacted sewerage treatment schemes are operational but require permanent repairs. One sewerage treatment scheme has been permanently repaired.
- Currently, 28 of the 105 established cassowary feeding stations are in use and 171 tonnes of fruit has been delivered to the feeding stations.

Figure 4.3 Affected national parks (2010/2011 & 2011/2012 events combined)



(Source: EHP - 13 August 2012)

Figure 4.4 Progress against work plan for National Parks restoration - 2010-11 events (Total for State)



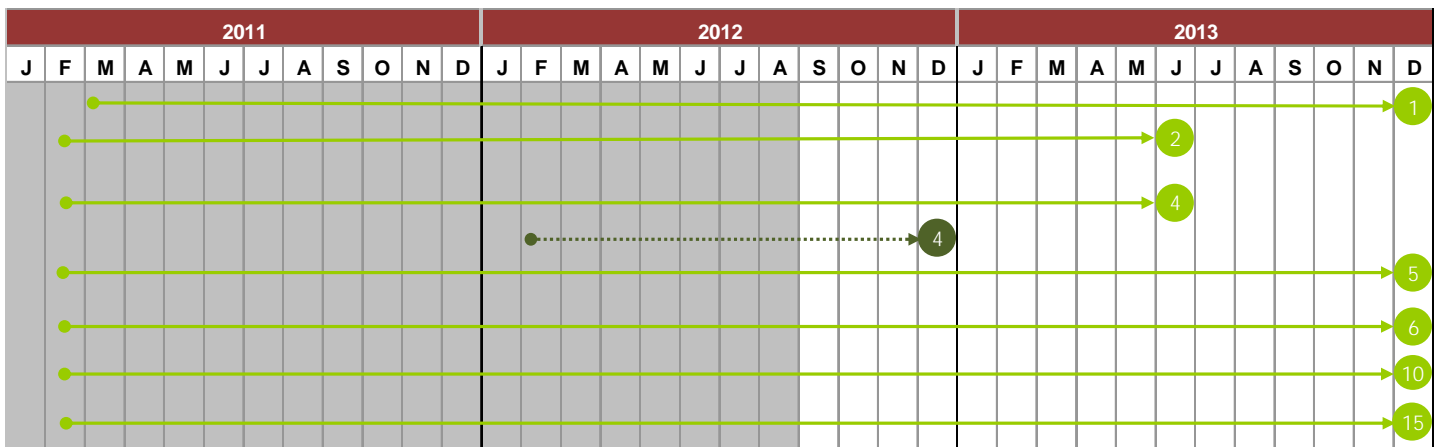
(Source: EHP - 13 August 2012)

Environment - progress of remaining key tasks against Implementation Plan

The progression of key tasks against the Implementation Plan for the Environment Line of Reconstruction was updated during the annual review process for Operation Queensland Update 2011-2013. Key tasks that have been reactivated in response to the current and emerging natural disaster events of 27 January-February 2012 are indicated with dark green markers.

2010/2011 events managed by the Authority - At 31 August 2012, 10 key tasks are complete and seven remain on track to be completed within the proposed timeframes.

2011/2012 events managed by the Authority - At 31 August 2012, three reactivated key tasks are complete and only key task 4 remains due for completion in December 2012. Impact assessments have been extended due to previous wet weather restricting access to the parks.



- 1 Light green - key task that is progressing satisfactorily
- 1 Dark green - reactivated key task or similar activity as a result of current or emerging events
- Hollow markers - timeframe by which a key task was previously expected to be completed
- Arrows indicate a key task is undertaken on an ongoing basis

2010/2011 events managed by the Authority

2011/2012 events managed by the Authority (shown in dark green)

Remaining key tasks:		Remaining reactivated key tasks:	
1	Coordinate and prioritise rehabilitation of the natural environment and community assets including reserves, parks, waterways and wildlife	4	Restore damaged infrastructure on State protected areas
2	Implement through planning, monitoring, assessment and advice, strategies to reduce future impacts on the natural environment in both urban and rural landscapes, focusing on long-term resilience and sustainability		
4	Restore damaged infrastructure on State protected areas		
5	Conduct ecological assessment and restoration of protected areas, ecosystems and species		
6	Assess and reconstruct soil health and biodiversity in upland areas and flood plains		
10	Assess event impacts on the natural environment and natural resources		
15	Support the expeditious repair of water and sewerage infrastructure		

4.4 Building Recovery

The building line of reconstruction is aimed at coordinating the planning and implementation of the statewide rebuilding program. Its particular focus is on housing and maximising the efficiency of resource allocation.

Building recovery		2010/2011 Events	2011/2012 Events	Current Status ¹
Power to homes and businesses <i>(Source: DPW 21 March 2012 and Ergon Energy 20 June 2012)</i>	Affected	480,000	9,000	489,000
	Restored	479,868	9,000	488,868
Insurance* <i>(Source: ICA 28 March 2012)</i>	Claims	131,935	6,408	138,343
	Estimated reserve value	\$3,780M	\$124.7M	\$3,904M
	Paid	\$2,810M	-	\$2,810M
Government owned buildings <i>(Source: DPW 31 August 2012)</i>	Assets affected	4,381	135	4,516
	Assets repaired	4,379	135	4,514 ²
Significantly affected residential housing <i>(Source: ICA 28 March 2012 and DCCSDS 20 August 2012)</i>	Category A - Non-liveable residential properties	3,636	-	3,636
	Category B - Residential properties vacated for repair	2,040	-	2,040
	Structural assistance grants	1,046	43 [#]	1,049

¹ The status indicates the current total impact on reported metrics for both disaster event periods.

² The two remaining assets relate to Queensland Health school dental health facilities, for which the tender procurement process is expected to commence late September 2012 and completion of works anticipated by late January 2013

* There has been no insurance update from the Insurance Council of Australia since March 2012.

An additional 4 applications have been received and are being considered.

The current state of activity:

- Power to homes and business - The number of properties still without power from the 2010-11 events is 135 at 19 September 2012.
- Buildings - Of the 135 other government-owned buildings impacted by the 2012 events, all 135 have been repaired at 31 August 2012.
- At 28 March 2012, there have been 6,408 insurance claims with an estimated reserve value of \$124.7 million as a result of the South West Queensland border floods.
- 2010-2011 events - At 6 September 2012, a total of 1,046 structural assistance grant claims with a value of \$8.6 million had been received.
- 2011-2012 events - At 6 September 2012, 43 structural assistance grant claims had been paid with a value of \$414,406. An additional 4 applications are currently being considered.
- The Building Services Authority (BSA) continues to provide advice as necessary.

Cyclone Shelter Project

In May 2011, a \$60 million fund was announced to construct 10 cyclone shelters and multi-purpose facilities in North Queensland. The shelters are being funded by a gift of \$30 million from the Emirate of Abu Dhabi* and a further \$30 million contribution by the Queensland Government. The new cyclone shelters will be active civic assets with multi-functional uses and capable of housing up to 800 people at a time in the event of a cyclone.

The Department of Housing and Public Works (DH&PW) is responsible for the design, delivery and project management of the Program over the two financial years of 2011-12 and 2012-13. The Authority is responsible for distributing and acquitting the funds against agreed milestones under the Program and managing the ongoing liaison with the Emirate of Abu Dhabi.

The target completion date for the Cyclone Shelter projects is November 2012, weather permitting, in time for the commencement of the cyclone season. The extended wet weather conditions and unforeseen latent conditions on some sites have resulted in delays to several projects being managed by DH&PW, in particular Proserpine, Port Douglas, Tully, Townsville, Ingham and Weipa.

The Cairns Regional Council (CRC) is managing the delivery of the Edmonton Leisure Centre Cyclone Shelter. The contract was awarded on 31 May 2012, being the first Council meeting post the election.

DH&PW has developed a communications strategy to inform affected communities and Local Disaster Management Groups of potential delays in completion of the shelters.

See Table 4.4.1 for the status of progress.

Table 4.4.1 Cyclone Shelter Progress Status

Cyclone shelter location	Delivery agency	Forecast Completion Date	% Complete
Bowen SHS	DH&PW	early October	86%
Townsville, Heatley Secondary College	DH&PW	early December	55%
Ingham SHS	DH&PW	mid December	42%
Port Douglas SS	DH&PW	early December	54%
Proserpine SHS	DH&PW	early December	50%
Tully SS	DH&PW	early December	52%
Weipa	DH&PW	late December	28%
Yeppoon SHS	DH&PW	mid October	78%
Mackay, new SHS	DET&E	late December	15%
Cairns, Edmonton Leisure Centre	Cairns Regional Council	February 2013	10%

(Source: DHPW 6 September 2012)



Above: Progress of completion of Cyclone Shelter - Bowen SHS



Above: Progress of completion of Cyclone Shelter - Yeppoon SHS

* The Emirate of Abu Dhabi is one of seven emirates that constitute the United Arab Emirates (UAE).

Building Recovery Line of Reconstruction Build Back Blitz Case example **A flood of community spirit helps Terry rebuild**

Terry lives in a beautiful home in a quiet, tree lined street in Fig Tree Pocket. His home was one of many in the suburb that would be inundated by floodwaters.

No one in Fig Tree Pocket could foresee the astonishing devastation of the rising river. Terry made three trips to his home on Tuesday 11 January 2011 as the flood waters rose. The first time he took some clothes and possessions away in his car, the second time he went back for more possessions and moved others onto tables and shelves. By the third trip roads were blocked by rising water. The following night his home was underwater. The next time Terry visited his home was in a boat to discover that receding water had dropped to the gutter line and his home and all its contents were ruined.



Above: Terry's house was underwater



Above: It was difficult to know where to start with the clean up

The scale of this disaster became insurmountable when Terry discovered that while fully insured, the new policy organised by his broker didn't cover him for flooding.

With no insurance money forthcoming, Terry who lives on his own and works full time as a senior building estimator, didn't know where to begin.

The financial stress was overwhelming. He spent the next 10 months renting a granny flat in Kenmore.

In November 2011 Terry had a call from a Fig Tree Pocket real-estate agent, Cathy Lammie who said Terry's neighbours were concerned about him. The Fig Tree Pocket 'Flood Buddies', an alliance of highly motivated neighbours and residents wanted to help Terry get home. This was the beginning of an amazing four month journey that saw Terry's home cleared, cleaned, redesigned, refitted and filled with furniture.

The Flood Buddies contacted the Build Back Blitz program, a partnership between the Queensland Reconstruction Authority, Department of Communities, non-government organisations and the private sector. The program helps owner-occupiers who are unable or struggling to progress the rebuilding of their homes. The hard work of the Flood Buddies, the local community and the Build Back Blitz program saw Terry back in his newly renovated home four months after the initial phone call.

Terry wanted to recognise all the people who helped him, including (but not limited to) two young guys with a ute who helped him clean up after the floods and provided him with photos of the damage; Max a local resident who mowed the grass and kept the weeds down; and the Flood Buddies, Katie Wilson, Cathy Lammie and Lindal Pitcher who sourced funding and organised whitegoods, vouchers, carpet, furniture and helped Terry re-design his home.

"In our suburb there was a lot of need that was going unmet," said Katie Wilson. "It was nice we were able to work together to help Terry." Terry also received financial assistance from the C3 Church (Indooroopilly) and St Vincent de Paul, which helped him rebuild inside his home. Terry still hears from several people who assisted him including the young man with the ute and the 'Flood Buddies'.



Above: The new kitchen and whitegoods are the product of donations and assistance from many different sources



Above: The flood height mark is still visible on the facade

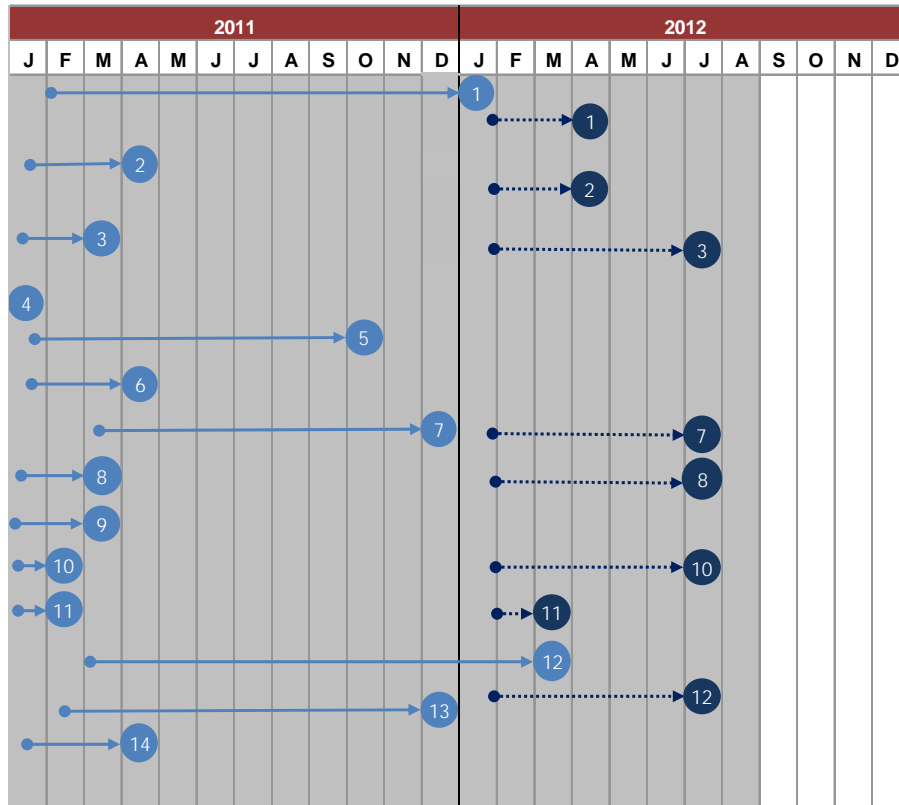
(Article courtesy the Authority August 2012)

Building Recovery - progress against Implementation Plan

The progression of key tasks against the Implementation Plan for the Building Recovery Line of Reconstruction was updated during the annual review process for Operation Queensland Update 2011-2013. All key tasks are now complete and are being monitored in line with normal business functions.

2010/2011 events managed by the Authority - All key tasks are complete.

2011/2012 events managed by the Authority - All reactivated key tasks are complete.



- Light blue markers indicate a key task that has been completed on or before planned schedule
- Dark blue markers indicate a reactivated key task that has been completed on or before planned schedule
- Arrows indicate a key task is undertaken on an ongoing basis

2010/2011 events managed by the Authority

2011/2012 events managed by the Authority (shown in dark blue)

Key tasks	Reactivated key tasks
1 Develop and implement solutions for temporary and long-term accommodation	1 Develop and implement solutions for temporary and long-term accommodation
2 Conduct assessment of damage to building stock, particularly housing	2 Conduct assessment of damage to building stock, particularly housing
3 Repair government building assets to allow functional operations	3 Repair government building assets to allow functional operations
4 Facilitate the repair of identified iconic buildings	
5 Determine repair/rebuild approach for community assets	7 Support, monitor and advise on reconstruction supply chain activities
6 Coordinate and prioritise medium to long-term demolition, repair and rebuilding	8 Support the Department of Communities Structural Assistance Grant assessments and develop contractor engagement strategy
7 Support, monitor and advise on reconstruction supply chain activities	10 Facilitate community access to independent building repair advice
8 Support the Department of Communities Structural Assistance Grant assessments and develop contractor engagement strategy	11 Identify and recommend action, where necessary, to address any regulatory impediments to successful building recovery
9 Support the Appeal Fund process and contractor engagement strategies	12 Monitor and report on the progress of Building Recovery program
10 Facilitate community access to independent building repair advice	
11 Identify and recommend action, where necessary, to address any regulatory impediments to successful building recovery	
12 Monitor and report on the progress of Building Recovery program	
13 Support the development and implementation of both cross-cutting planning and local community, economic recovery and reconstruction plans	
14 Develop subordinate implementation plans to achieve key tasks at project level	

4.5 Roads and Transport

The roads and transport line of reconstruction is aimed at reconnecting people and enabling the re-supply of communities across the State.

Roads and transport		2010/2011 Events	2011/2012 Events
State road network (kms) <i>(Source: DTMR 31 Aug 2012)</i>	Affected	20,610	10,890
	Reopened	19,922 [#]	9,737 [^]
State rail network (kms) <i>(Source: DTMR 29 Aug 2012)</i>	Affected	4,748	4,180
	Recovered	4,596	4,180
Ports <i>(Source: DTMR 8 December 2011)</i>	Affected	11	*
	Recovered	11	*

[#] Roads declared closed during the natural disasters of the summer of 2010/11, km closed refers to roads clearly signed as 'closed', restricted to '4WD/high clearance vehicles' (4WD vehicles high ground to chassis clearance), 'excess mass/dimension/80% of legislative axle group (road closed to vehicles of excess mass or over dimension /80% of the mass permitted for the axle type)', 'load restriction', 'closed to all vehicles/closed to km shown are unique km closed' (eg. the unique km closed of state-controlled roads during (declared) natural disasters during the 2010-11 summer was 20,610 km.)
Source: EMQ declarations and 131940

[^] continued wet weather particularly in the Central West Region during June and July has extended road closures.

* None closed as a result of the 2011-12 events.

The official recovery/emergent works phase for the 2011/12 summer has ended. Future recovery reporting will occur following any newly activated natural disaster and activation of Restoration of Essential Public Assets (REPA) under NDRRA.

At 30 August 2012, there were 374kms of state-controlled roads closed or with limited access as per the map (page 27) showing the Operational Status of the Road Network. The current dry period is providing all TNRP delivery agents with an excellent opportunity to deliver reconstruction works with minimal impact by wet weather.

The current state of activity:

- Roads – Construction commenced on 51 projects in July 2012 including works on the Warrego Highway (Dalby – Miles), six projects valued at \$125 million in Fitzroy Region and six projects in the Mackay/Whitsunday Region valued at \$90 million.
- Rail - All Queensland rail lines closed due to weather events in the 2011/12 summer have been recovered and services have resumed.

Key achievements:

- Eleven contracts with a total value of \$137 million were awarded in July 2012, including one major contract of \$46.6 million in Mackay/Whitsunday and ten contracts less than \$30 million totalling \$91.2 million. Since the commencement of the Transport Network Reconstruction Program, 404 contracts worth \$3.539 billion have been awarded.

Key achievements (continued):

- TMR will implement improved monitoring and audit programs to address the key challenge of traffic-related road safety while reconstruction works are in progress. Regions have been requested to encourage works contractors to use a variety of signage to achieve safer outcomes as well as using police enforcement.
- Significant progress has been made on replacement of the remaining damaged aids to navigation (beacons and buoys) by Giles Contractors Pty Ltd based in Mackay. These were damaged as a result of the 2010-11 summer events. By August 2012, 26 beacons had been reconstructed in the Mackay Whitsunday Region and it is expected the contract will be completed ahead of the November 2012 original schedule. The replacement beacons are a new design that will result in a more resilient structure.

4.5 Roads and Transport (Continued)

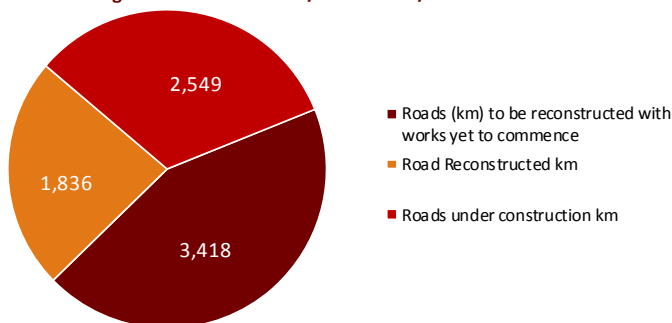
Key Issues:

- Construction works were drastically impacted in July 2012 due to the continuing unseasonal wet weather. The full impact of the weather may be seen in coming months with the likelihood that some construction activities originally planned for the drier season may be rescheduled after the upcoming wet season at the end of 2012.
- Due to the extensive flooding across the state in 2011/12, a review of the network damage has been undertaken and an estimate of the reconstruction costs completed. Additional funding to reconstruct transport assets damaged during the 2011/12 disasters has been submitted to Queensland Treasury for consideration.

Reconstruction of damage in 2010-2011

- TMR plans to reconstruct 7,803 kms of roads damaged as a result of Cyclone Yasi and floods in 2010-2011. Of these roads, by 31 July 2012, over 1,836 kms had been reconstructed and an additional 2,549 km are currently under construction. *See Figure 4.5.1*

Fig. 4.5.1 Roads Damaged Reconstructed Yasi/Floods 2010/11



(Source: DTMR 31 July 2012)

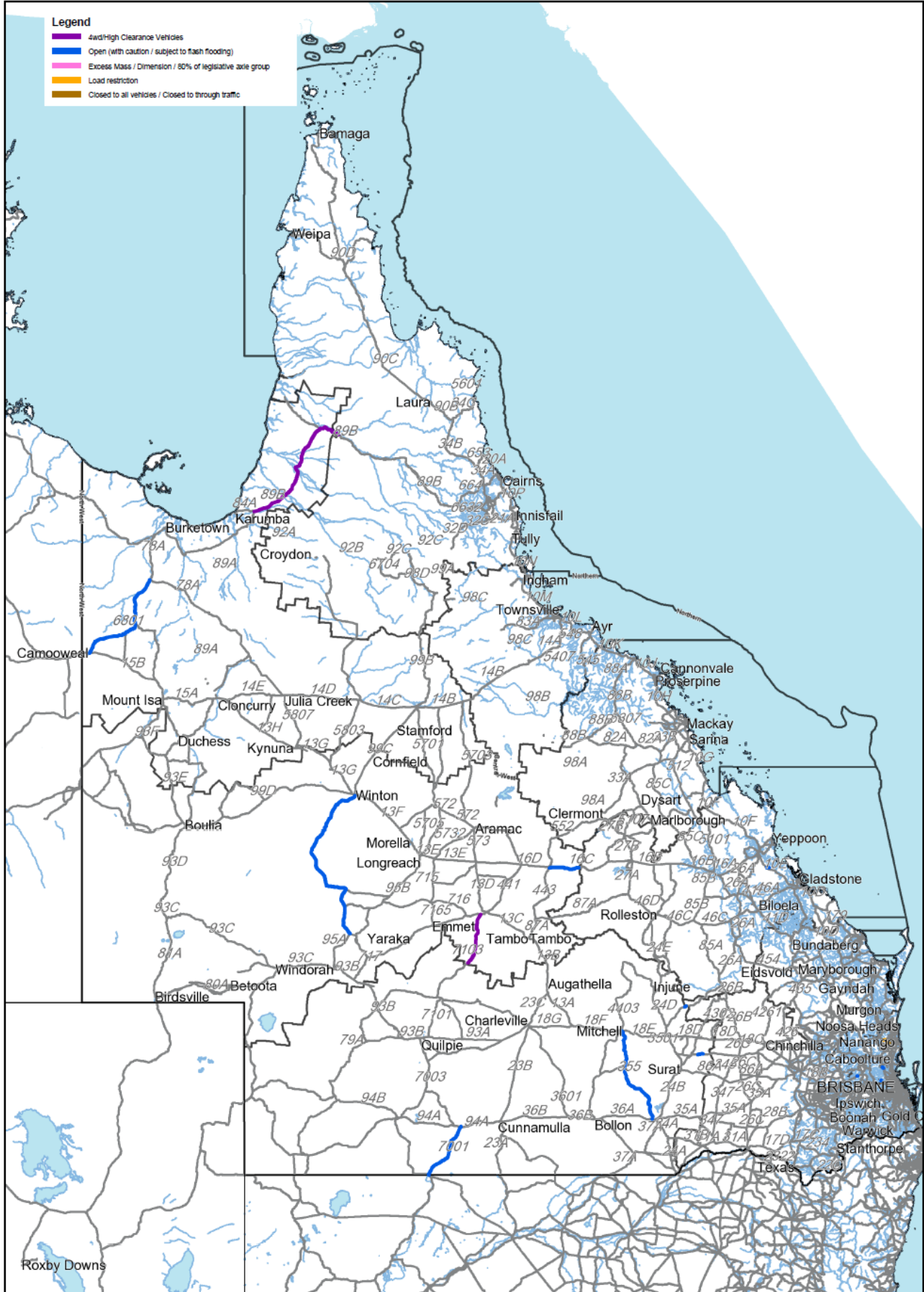
The status of road recovery and reconstruction packages at 24 August 2012 is:

- \$845 million of packages are completed for both recovery and reconstruction works as follows:
 - \$440.3 million of packages are completed for recovery works;
 - \$404.3 million of packages are completed for reconstruction works;
- \$2,773 million of reconstruction works are currently underway;
- \$397 million in reconstruction works tenders are currently being assessed for approval;
- \$59 million of reconstruction works packages are out to tender; and
- \$309 million of reconstruction works contracts are being prepared to go to market in the next month.

Note: these values include costs to reconstruct works from damage caused by events in 2010 as well as the events of 2011.

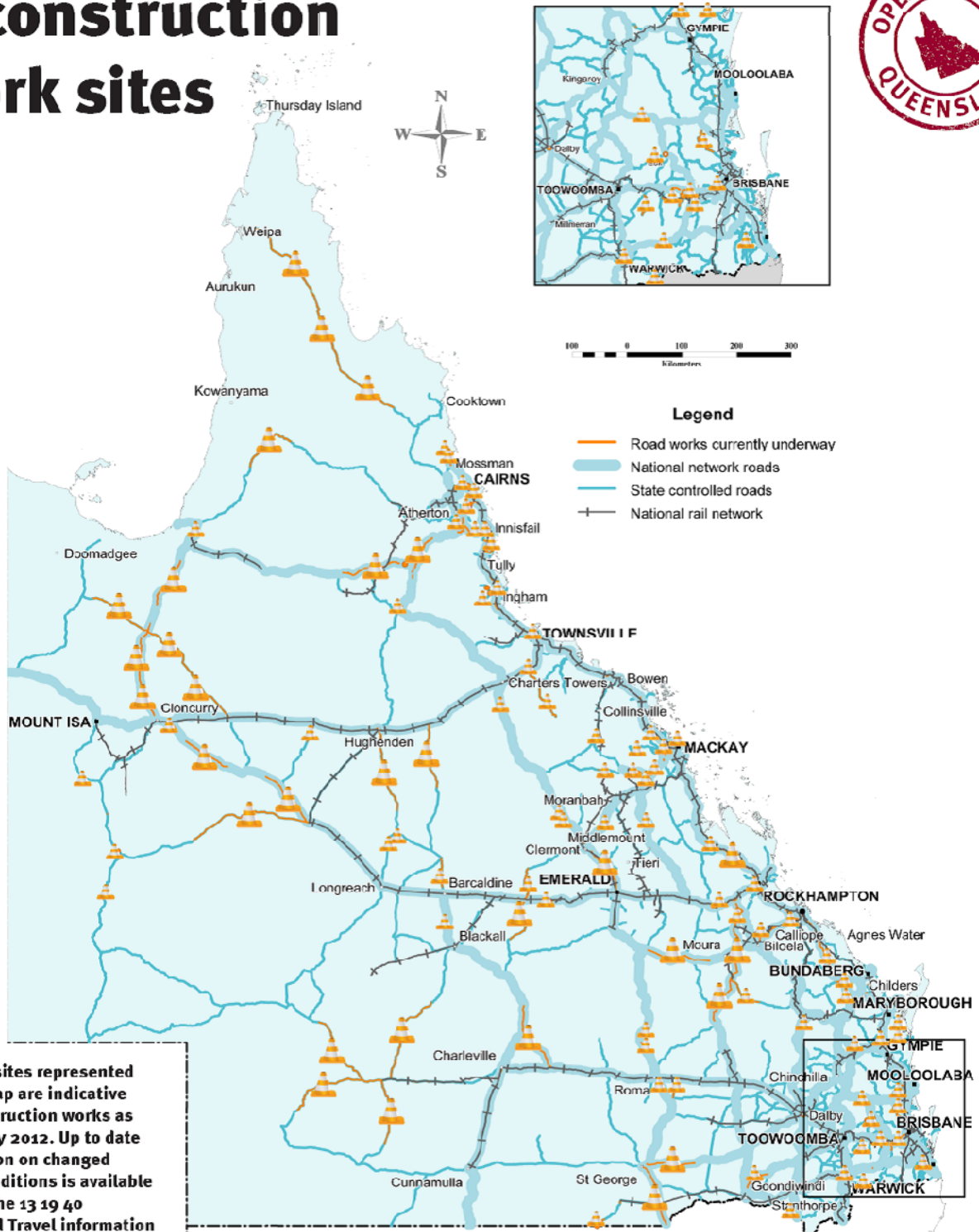
- For 2010-11 events, procurement has commenced for 95 packages and 426 packages are currently in delivery or complete.

(Source: DTMR 24 August 2012)



The State of Queensland (including the Department of Transport and Main Roads) does not make any statement, representation, or warranty about the accuracy, currency, reliability, suitability for any purpose, or completeness of the information contained in this document/map. To the maximum extent possible, the State of Queensland disclaims all responsibility and all liability (including without limitation, liability in negligence) for all expenses, losses, damages and costs which you or anyone else might incur as a result of using this document/map or as a result of it being inaccurate or incomplete in any way and for any reason.

Transport and Main Roads reconstruction work sites



The worksites represented on this map are indicative of reconstruction works as at late July 2012. Up to date information on changed traffic conditions is available through the 13 19 40 Traffic and Travel information website.

Updated August 2012

Roads and Transport Line of Reconstruction Case example, South West Region, Maranoa Regional Council Warrego Highway's 'Green Army' members graduate in Roma

The Warrego Highway's 'Green Army' graduated in Roma in July 2012 after an 18-week course building their skills in environmental controls, general construction skills and working in teams.

Green Army participant John Zournazides, of Surat, said he was feeling more confident about his future chances of gaining employment. 'My three-year goal is to become a supervisor, and I feel confident I will get more training opportunities to achieve my goal,' he said. Mr Zournazides, who travelled 1.5 hours per day to participate in the program, has since been engaged by program partner Probuild Civil (Qld) Pty Ltd until late 2012.

The graduates developed practical and theory environmental protection measures such as installing rock checks, sediment fences and silt socks. They also participated in general construction tasks including line marking, traffic monitoring and using GPS equipment for setting centre lines. Participants gained essential skills making them job ready for the construction industry including working in teams, time management and interpersonal communication.

Nine people, including three Indigenous Australians, participated in the program.

Participants stated that safety had been a big aspect of the program.

'The crew really looked after each other,' one participant said. 'Everyone looked after everyone else, looking out for each other's safety,' he said.

One participant has identified traffic control as a future career path, after having seen the amount of work available and the opportunities for steady employment and travel.



Above: Tamara Keliher of the YWCA presents Green Army participant Les Ogden with Certificate in Roma on 27 July 2012

The Green Army graduates participated in the 18-week program working on reconstruction of the Warrego Highway between Jackson and Roma under the supervision of construction contractor Probuild Civil (Qld) Pty Ltd. This section of the highway was damaged by natural disasters in November 2010 and again in February 2011.

The program was run by the Civil Contractors Federation (CCF) in partnership with the Young Women's Christian Association (YWCA) of Queensland and Probuild Civil as the Industry Representative partner to help rebuild the lives of long-term unemployed people from the Roma area.

Civil Train QLD, CCF Queensland's registered training organisation, provided participants with Certificate II training in Resources and Infrastructure (Work Preparation), which was presented at a graduation ceremony in Roma on 27 July 2012.

A CCF spokesperson said that the newly-skilled participants have a proven dedication and interest in the construction industry.

'Now that the project is complete we are supporting each person to gain meaningful employment,' he said. 'Already, the participants have gained experience and tickets in some onsite machinery, readying them to step straight into paid employment.'

This successful initiative has been funded by the federal and state governments.



Above: Green Army participants and program partners at the Graduation Ceremony in Roma, July 2012



Above: Green Army participants Andrea and John Zournazides, Peter Collier and Les Ogden at the Graduation Ceremony in Roma, July 2012

Roads and Transport Line of Reconstruction Case example North West environmental management

The Department of Transport and Main Roads' (TMR) North West Transport Network Reconstruction Program (TNRP) environmental team is responsible for all environmental matters relating to road works over a total area of 308,134km² or 17% of Queensland.

The team faces unique challenges including working concurrently on remote project sites and managing diverse contractor pools with differing levels of experience in environmental management. In the past, some contractors struggled with compliance in environmental management.

Given this, the team is now working closely with its key contractors to develop an approach to environmental management and better support those with less experience. TMR focuses on building relationships with contractors using a three staged approach.

The new approach uses intensive induction and awareness training sessions, pre-start construction meetings and ongoing construction and compliance audits.

Since the approach was first undertaken about 12 months ago, there has been an increase in the understanding of environmental issues and improved onsite management and mitigation controls, with an overall reduction in environmental incidents.

By developing a culture of ongoing consultation and an open door policy, TMR is ensuring contractors proactively engaged with the team when unsure of environmental matters. Issues discussed at site include how to control erosion and sediment and how to preserve local flora and fauna.

The process is continuing and contractors are taking more ownership of environmental responsibility and often going above and beyond past business practices to comply with environmental standards. The increased consultation has facilitated TMR's work with and monitoring of projects spread over a wide geographic area.

(Article courtesy DTMR 3 September 2012)



Above: scouring at the Cloncurry River Bridge Approach



Above: fencing off the trees within the construction zone



Above: a completed project and the environment left unharmed

Roads and Transport Line of Reconstruction Case example **Face lift for flood damaged retaining walls at Wardell Street, Ashgrove in Brisbane**

Severe erosion of two retaining walls on busy Wardell Street left a highly visible scar on the inner-city landscape after the 2011 flood.

Wardell Street is an arterial road, carrying thousands of vehicles daily. During the recovery phase, barriers were installed on footpaths on the eastern and western sides of Wardell Street to protect pedestrians during investigations to identify the best reconstruction solutions.



Above: First retaining wall on eastern side of Wardell Street before repair works – 30 May 2012



Above: First retaining wall on eastern side of Wardell Street works completed -13 June 2012



Above: First retaining wall on eastern side of Wardell Street during the works – 31 May 2012

Although small in scale, repair of these walls is symbolic of the city's recovery from the traumatic events of January 2011 and it has been handled sensitively by the Department of Transport and Main Roads Metropolitan Region flood-reconstruction team, particularly as reconstructing both walls involve volumetric resumptions from nearby homeowners.

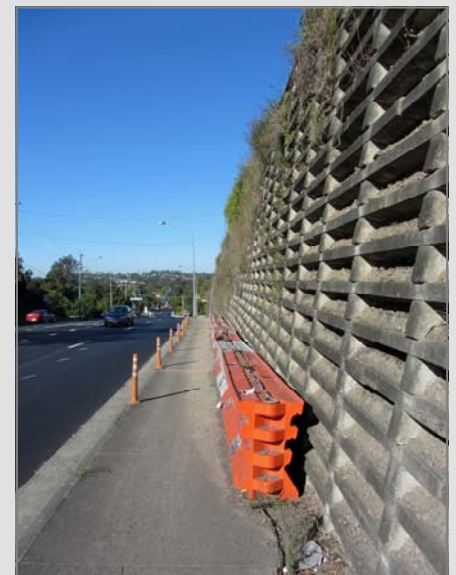
The works to repair the wall on the eastern side involved drilling and placing soil nails up to four metres inside the adjoining property, two metres below ground. Successful consultation with the property owner enabled work to proceed in tandem with the volumetric resumption process.

Stabilisation of the architecturally finished retaining wall on the eastern side was completed in June 2012 by contractors RoadTek and Rix Group, within two weeks of commencement and well ahead of schedule.

Community consultation and planning is under way for the repair of the wall on the western side, which is expected to begin in late August 2012. Affected property owners have been informed about the planned reconstruction of the retaining walls more than a month in advance.

During the repair of the first retaining wall, letter box drops and variable message signs kept other residents and road users informed particularly given these works overlapped with nearby TMR road works.

These Operation Queensland projects, valued at \$2.3 million are funded under Natural Disaster Relief and Recovery Arrangements (NDRRA), a joint federal and state initiative. Under these arrangements, the Australian Government provides 75% of the funding, with 25% from the Queensland Government.



Above: Second retaining wall on western side of Wardell St. before repair works - 31 July 2012. Works started in late Aug 2012

(Article courtesy DTMR 3 September 2012)

Roads and Transport Line of Reconstruction - Resilience of the Queensland Road Network Wide Bay/Burnett Region 2011 Damage and 2012 Resilience Following North Coast Storms and Flooding and East Coast Hybrid Flooding 24 Feb – 7 March 2012

In late 2010 and early 2011, the Wide Bay/Burnett Region was declared a natural disaster due to heavy rain and flooding following Tropical Cyclones Tasha and Anthony.

These rain events caused damage to a number of sections of the Maryborough – Cooloola Road.

This road has an average annual daily traffic count of 2,155 vehicles, of which 15% are heavy vehicles. Logging is a key industry in the area using this local transport link, together with local community and tourist traffic.

Following damage assessed in early 2011 reconstruction work commenced and for this section of the road was near completion when further flooding in March 2012 occurred.

These photos show the initial damage to the road, the partially reconstructed road under flooding and how the reconstructed road has proven resilient to further inundation despite the traffic and heavy vehicle use.



Left: 2011 Post-Natural disaster
Damage to pavement and shoulder
evident on 9 February 2011

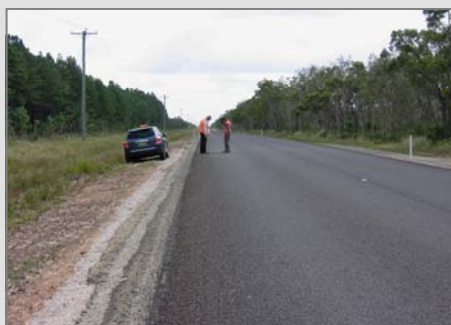


Right: 2012 Natural disaster
Flooded on 6 March 2012 after
reconstruction works partially completed

Flooding and water logging around roads can cause structural and lasting road damage which may not be immediately obvious when water recedes. Water can weaken road foundations and when traffic, particularly heavy vehicles, use the road and water is drawn up into the road foundations, the underlying structure may be weakened.

Damage caused may include wheel rutting, deflection of pavement, collapse of road shoulders, cracking of the bitumen surface and pot holes. A more resilient road structure allows water to drain away to keep the road foundation and road base material as dry as possible to minimise the risk of damage.

2012 Resilience examples – March and July



Above: March 2012 - Minor water erosion
(eastern side) on 12 March 2012



Above: March 2012 - No erosion (west side) and
pavement surface unaffected on 12 March 2012



Above and below: July 2012 - Pavement stable
after flooding and traffic usage on 5 July 2012



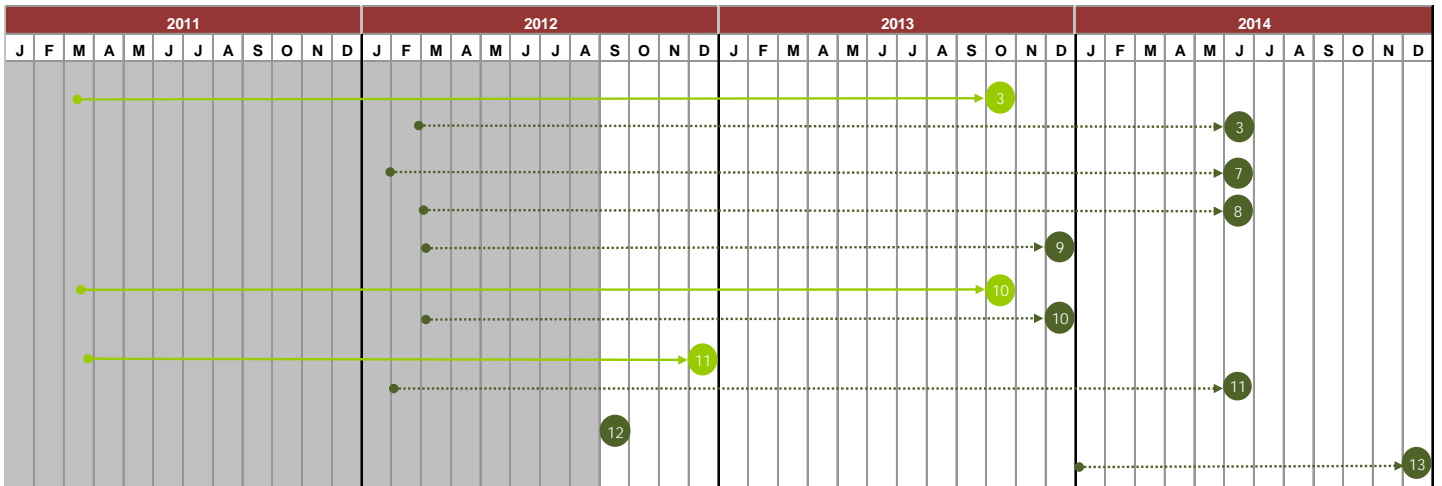
(Article courtesy DTMR 3 September 2012)

Roads and Transport - progress of remaining key tasks against Implementation Plan

The progression of key tasks against the Implementation Plan for the Roads and Transport Line of Reconstruction was updated during the annual review process for Operation Queensland Update 2011-2013. Key tasks that have been reactivated in response to the current and emerging natural disaster events of 27 January-February 2012 are indicated with dark green markers.

2010/2011 events managed by the Authority - At 31 August 2012, nine key tasks are complete and three key tasks remain on track to be completed within the proposed timeframes.

2011/2012 events managed by the Authority - At 31 August 2012, two reactivated key tasks are complete and the eight remaining key tasks are on track to be completed within expected timeframes.



- 1 Light green - key task that is progressing satisfactorily
- 1 Dark green - reactivated key task or similar activity as a result of current or emerging events
- Hollow markers - timeframe by which a key task was previously expected to be completed
- Arrows indicate a key task is undertaken on an ongoing basis

2010/2011 events managed by the Authority

Remaining key tasks:	
3	Continue to implement, monitor and review the transport reconstruction plan
10	Review existing Queensland Transport and Roads Investment Program (QTRIP) (capital works plans) to accommodate the NDRRA program
11	Support the development and implementation of both cross-cutting planning and local community and economic recovery and reconstruction plans

2011/2012 events managed by the Authority (shown in dark green)

Remaining reactivated key tasks	
3	Continue to implement, monitor and review the transport reconstruction plan
7	Develop regional reconstruction projects and activities accounting for regional reconstruction priorities and goals.
8	Moderate regional reconstruction projects within the state-wide reconstruction program and other roads and transport infrastructure programs
9	Prepare NDRRA submissions as required
10	Review existing Queensland Transport and Roads Investment Program (QTRIP) (capital works plans) to accommodate the NDRRA program
11	Support the development and implementation of both cross-cutting planning and local community economic and environmental recovery and reconstruction plans
12	Review and update implementation plans to achieve key tasks at project level
13	Program closure

4.6 Community Liaison and Communication

This line of reconstruction is focused on building stakeholder confidence in the reconstruction by ensuring consistent and regular communication of public information.

Reconstruction begins on Cardwell foreshore

Work has started on a \$32.47 million project to reconstruct and rejuvenate the Cardwell foreshore, which was severely damaged by Tropical Cyclone Yasi.

Chair of the Queensland Reconstruction Authority Major General Richard Wilson (Ret'd) attended the site on 29 August to view the construction works underway, accompanied by Senator for Queensland Jan McLucas, Minister for Natural Resources and Mines Andrew Cripps, and Deputy Mayor of Cassowary Coast Regional Council Bryce Macdonald.

The rebuilding project will restore Cardwell's foreshore to its former beauty and provide a scenic recreation area for residents and visitors. The reconstruction of the Bruce Highway (Victoria Street) will also make the road safer and more resilient than before, to service the needs of the community and road users.

The Department of Transport and Main Roads is working together with the Cassowary Coast Regional Council to deliver the Reconstructing Cardwell project, with reconstruction works expected to be completed by July 2013.



Above: Minister for Natural Resources and Mines Andrew Cripps, Queensland Reconstruction Authority Chair Major General Wilson (Ret'd), Senator for Queensland Jan McLucas, Deputy Mayor of Cassowary Coast Regional Council Bryce Macdonald and local Councillor Glenn Raleigh at Cardwell foreshore.

Local Government reconstruction progress

Between 1 and 31 August 2012, staff from the Authority met with members of council and/or inspected reconstruction works for more than 24 council areas, spanning all of the five reconstruction regions. With strong reconstruction progress being made across Queensland, inspections focused on assisting Councils with submissions, start of works, progress of works and project completion.

Significant work continues on profiling the reconstruction work being done by Councils on the Authority's website, with case studies and news stories from ten council areas added to the News and Gallery map this month.

Completed reconstruction projects continue to roll-out



Above: Jim Watson, Works Manager Banana Shire Council and Queensland Reconstruction Authority CEO Graeme Newton inspect reconstruction works at Roys Road. Banana Shire Council's reconstruction works are well progressed, and Council has an overall schedule to complete the works by June 2013.

4.6 Community Liaison and Communication (Continued)

Engagement activities

During August the Authority worked with the Balonne Shire Council on flood mitigation strategies for the townships of St George and Bollon, participating in community meetings and providing advice to Council. The Authority also met with the Maranoa Regional Council to discuss flood mitigation strategies for Roma.

Representatives from the Authority gave presentations on progress of the reconstruction program at key forums including the Central Region Engineers Conference and the Australian Industry Group.

Representatives from the Authority also participated in and supported community engagement activities organised by councils to celebrate completion of major projects such as Jellicoe Bridge in Toowoomba and Joseph Brady Park in Ipswich.

For the month of August the Department of Transport and Main Roads continued to keep stakeholders informed of reconstruction works. New and updated project information, including images of reconstruction progress, was loaded to www.tmr.qld.gov.au.

TMR also distributed updates to external stakeholders, one advised motorists and local communities in the Darling Downs of reconstruction-related road works underway in their region, another provided an update on the statewide critical materials required including plant and machinery, transport logistics and operators to link the supply chain from end to end.

The Traffic and Traveller information site www.131940.qld.gov.au was updated with information on works across the state and associated changes to traffic conditions. Information was also made available to road users through community service announcements, VMS, SMS subscription services, A3 posters in service stations and truck stops and through the local print media via media statements.

Queensland Health distributed Recovery News, a quarterly newsletter developed by the Centre for Trauma, Loss and Disaster Recovery. The Family Bereavement Service also continued to provide telephone and face-to-face counselling and support to individuals across the state who were bereaved as a result of the 2010-11 floods and cyclones.

Media analysis

There have been a total 155 reconstruction media items in August (96 print, 8 TV and 51 radio) with the main focus being announcements about tenders and the commencement or completion of major reconstruction works.

Brisbane dominated print media output, while Cairns and Townsville generated the majority of reconstruction-related radio coverage.

Flood mitigation stories and the commencement of the Reconstructing Cardwell project featured prominently.

Central & North Burnett Times, Kingaroy QLD
23 Aug 2012

Bridging road gap

NORTH Burnett Regional Council has been praised for making good progress on its \$26 million flood reconstruction program.

Almost half of the council's reconstruction work is either under way or complete, with millions of dollars more in the pipeline.

Deputy premier and the Member for Callide Jeff Seeney said he had been impressed with the region's reconstruction progress, but said rebuilding from the state's natural disasters would take time.

He said flood restoration work was under way on more than 25 roads in Biggenden, Gayndah, Monto and Mundubbera.

Mayor Don Waugh said local bridges had also been badly damaged in the 2010-11 flood event, as well as water infrastructure for Gayndah and Mundubbera.

"The Bon Accord Bridge at Gayndah is a major link in the North Burnett road network, and its closure affected

residents, local farmers and their employees," Cr Waugh said.

Five spans of the Bon Accord Bridge endured structural damage requiring an eight-week bridge closure to carry out restoration works.

"Due to strong water flows in Barambah Creek, we were unable to establish a side track, resulting in a 20km detour for trucks, cars and the local school bus," he said.

"Understanding the impact of the bridge closure on the local community, we hosted a community forum and worked with local media groups to give residents advance notice about upcoming bridge closures and work.

"This approach worked really well and we were able to generate positive community engagement."

Cr Waugh said the North Burnett had a tight schedule of flood reconstruction works planned for the year ahead.

"Good weather permitting, we are scheduled to wrap up our reconstruction program by June 30, 2013."

4.6 Community Liaison and Communication (Continued)

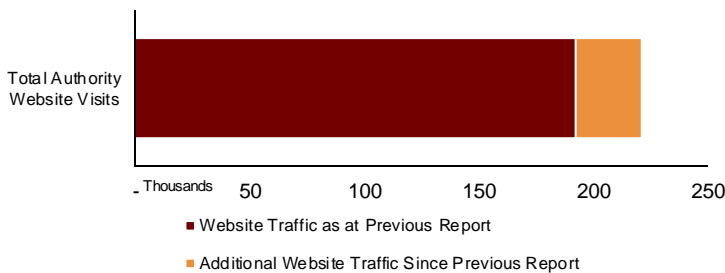
Communications

There are a number of methods available to the public to communicate with the Authority.

The Authority's website provides information to the public and continues to be enhanced with ongoing updates. At 31 August, total visits to the Authority's website amounted to 221,525 – a significant increase since the previous reporting period.

See Figure 4.6.1

Fig. 4.6.1 Website Traffic

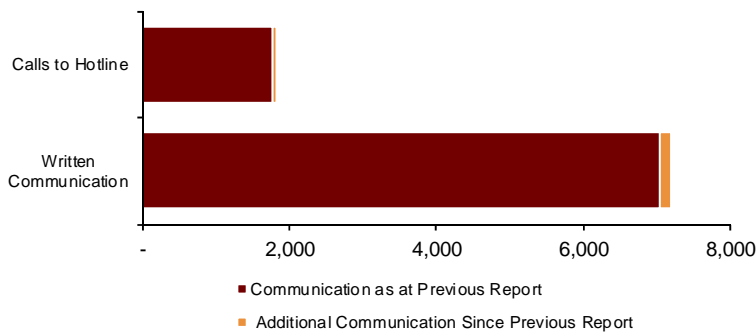


(Source: the Authority at 31 August 2012)

At 1 August, the Authority had received an additional 67 calls to its dedicated hotline and 168 additional pieces of written correspondence were received since the previous report.

See Figure 4.6.2

Fig. 4.6.2 Communication



(Source: the Authority at 1 August 2012)

Community Liaison and Communication Line of Reconstruction Case example Community infrastructure milestones improving life for residents of Ipswich Joseph Brady Park reopens

The Ipswich community turned out in force for the opening of a favourite local park on Sunday 26 August.

Joseph Brady Park, which sits on the junction of the Bremer and Brisbane rivers, was just one Ipswich park near decimated by the flood. It was consumed by a 19.5 metre high wall of water which covered around 95 per cent of the parkland.

The damage included destruction of the playground and children's facilities, canoe launch point, car parks and the access road, table, seating and shelter structures, and barbecue facilities.

Given the scale and scope of devastation, a complete rebuild of Joseph Brady Park was required.

Ipswich Mayor Paul Pisasale said a rigorous design and reconstruction tender process ensued, with the successful contractor required to meet a suite of key principles to ensure value-for-money.

"These principles include robustness, resilience, functionality, efficiency and safety – all to deliver a like-for-like replacement of the park and its assets," Councillor Pisasale said.

"But it's not just a focus on value-for-money that has shone through – the rebuilt Joseph Brady Park is also testament to what can be achieved through innovation.

"The design was implemented to showcase the natural beauty and river scenery that abounds the park, incorporating use of native plants to promote bank stabilisation and habitat, vegetation to passively control access to the rivers and reduce flood water velocity on structures, and a playground climbing wall to reduce moderate flooding impacts to playground areas.

"All of these innovative elements combine to create a like-for-like park that meets the needs of the 10,000 Ipswich locals and countless more visitors that use it."



Above: Aerial photo of park flooding – the park was covered by up to 19.5m high floodwater



Above: New park facilities - The new children's playground and climbing wall have been situated to improve its flood immunity

Council also contributed to the project by meeting the cost to upgrade some park infrastructure, like new electric BBQs to replace the previous gas BBQs.

The reopening of the park on Sunday 26 August was a well-attended local event that celebrated the community's resilience and recovery.

Case study provided by the Authority 3 September 2012

Community Liaison and Communication Line of Reconstruction Case example Community infrastructure milestones improving life for residents of Toowoomba Jellicoe Street Bridge reopens

For 18 months the bridge that links the New England Highway to the east and the Warrego Highway was severed. But now with help from all tiers of government, the people of Toowoomba have their new \$2.7 million Jellicoe Bridge officially open.

Representatives from federal, state and local government, the Queensland Reconstruction Authority, construction contractors F K Gardner and Sons, and the local business community and residents came together on Friday 3 August for a formal unveiling of the long-awaited project.



Funded under NDRRA (Natural Disaster Relief and Recovery Arrangements), the Jellicoe Street bridge reconstruction was the first major project completed under the Toowoomba Regional Council's flood recovery program.

Toowoomba Mayor Paul Antonio said the replacement bridge, which averages over 5000 vehicles per day, signalled new beginnings for Toowoomba.

"Council knows just how vital Jellicoe Street Bridge is to Toowoomba's economy," Councillor Antonio said.

"There's no denying the closure of Jellicoe Street Bridge has had significant impacts for both local businesses and residents."

Above: The old bridge was severely damaged in the flash flood of 10 January 2011. The closure had a major impact on commuter and pedestrian travel.



Above: The opening of Jellicoe Street bridge represents a major reconstruction milestone for Toowoomba residents

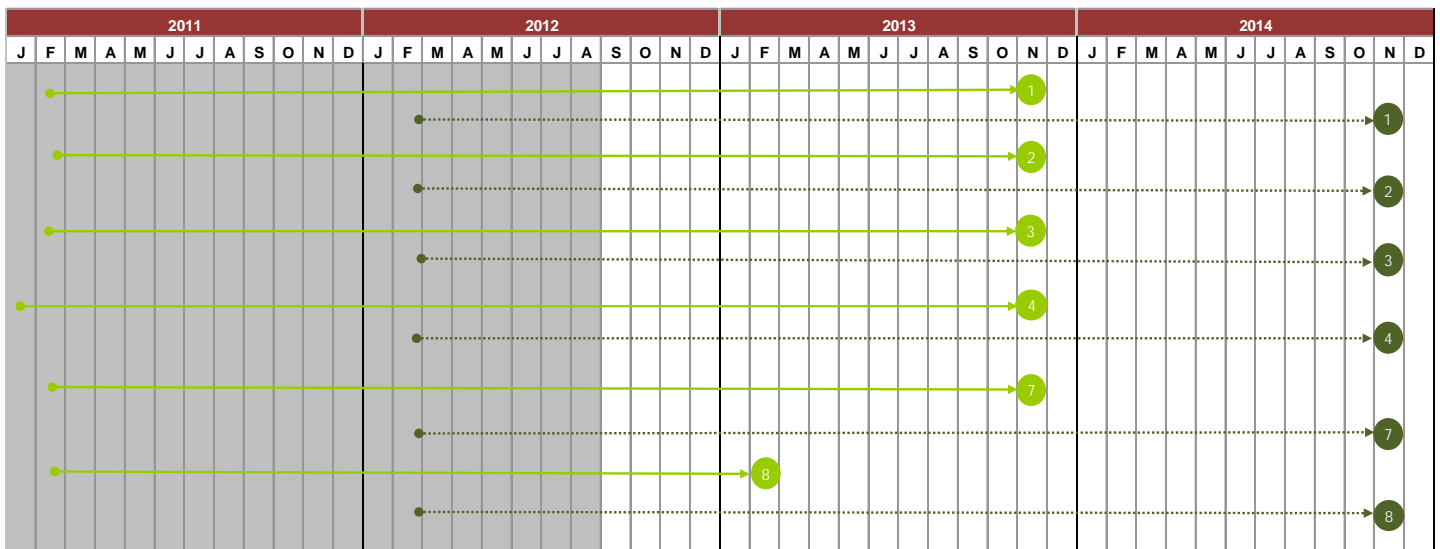
Case study provided by the Authority 3 September 2012

Community Liaison and Communication - progress of remaining key tasks against Implementation Plan

The progression of key tasks against the Implementation Plan for the Community Liaison and Communication Line of Reconstruction was updated during the annual review process for Operation Queensland Update 2011-2013. Key tasks that have been reactivated in response to the current and emerging natural disaster events of 27 January-February 2012 are indicated with dark green markers.

2010/2011 events managed by the Authority - At 31 August 2012, five key tasks are complete and all six remaining tasks are on track to be completed within proposed timeframes.

2011/2012 events managed by the Authority - At 31 August 2012, five of the reactivated key tasks are complete and the six remaining key tasks are on track for completion within estimated timeframes.



- 1 Light green - key task that is progressing satisfactorily
- 1 Dark green - reactivated key task or similar activity as a result of current or emerging events
- Hollow markers - timeframe by which a key task was previously expected to be completed
- Arrows indicate a key task is undertaken on an ongoing basis

2010/2011 events managed by the Authority

2011/2012 events managed by the Authority (shown in dark green)

Remaining key tasks:		Remaining reactivated key tasks	
1	Reconnecting people and communities connected through the regular sharing of significant information, including cross-department coordination and local councils	1	Reconnecting people and communities connected through the regular sharing of significant information, including cross-department coordination and local councils
2	Provide strategic communications and information advice to the Queensland Government and the Queensland Reconstruction Authority	2	Provide strategic communications and information advice to the Queensland Government and the Queensland Reconstruction Authority
3	Identify developing sentiments within communities and provide advice on the most appropriate reinforcement and response measures	3	Identify developing sentiments within communities and provide advice on the most appropriate reinforcement and response measures
4	Coordinate community liaison and communication activities	4	Coordinate community liaison and communication activities
7	Engage media and communities engaged as key milestones are achieved	7	Engage media and communities engaged as key milestones are achieved
8	Monitor and report measures of progress and effectiveness	8	Monitor and report measures of progress and effectiveness



Section five: State of the State - Disaster Assistance

The following section provides an overview of the status of the disaster assistance associated with the 2010/2011 events and the current 2011/2012 events managed by the Authority.

5.1 Disaster Assistance by event period - 2010/2011

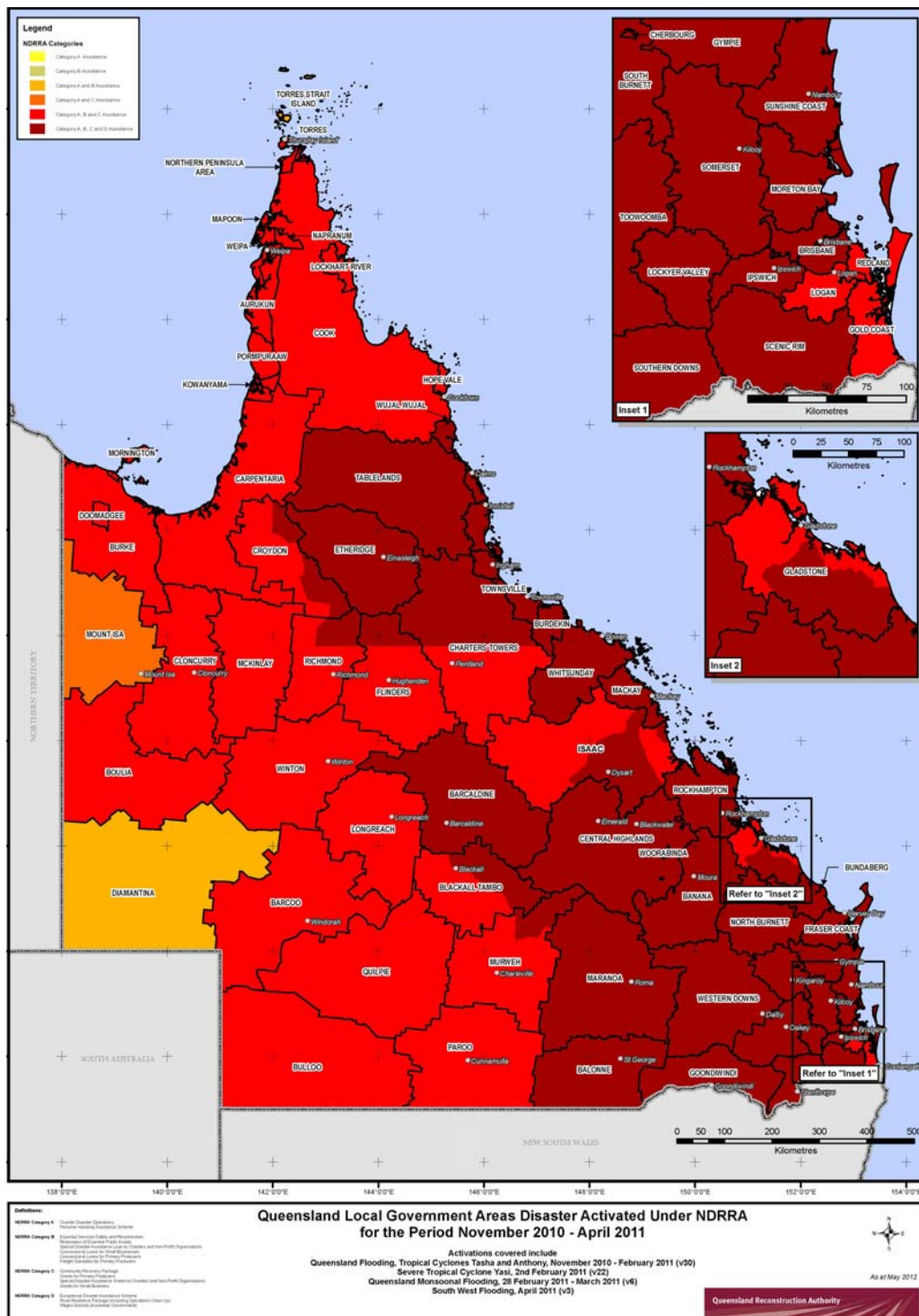
The following section provides a summary of the disaster assistance in relation to the July 2010 to June 2011 period Queensland natural disaster events. The events occurring in this period are listed in the Timeline of Activations (p.3) of this report.

The values represent all applications approved by the Authority and grants/loans assistance paid under the Queensland Disaster Assistance Framework described in **Table 5.3**.

Key Developments since last report:

The Authority has received 1,831 applications with a value of \$7.78 billion. This is an increase of 38 applications, worth approximately \$99.4 million since the last report. A total of \$5.7 billion has been processed, an increase of \$512 million.

Map 1 - LGAs disaster activated under NDRRA for 2010-2011 events managed by the Authority



5.2 Disaster Assistance by event period - 2011/2012

The following section provides a summary of the disaster assistance in relation to the July 2011 to June 2012 period Queensland natural disaster events. The events occurring in this period are listed in the Timeline of Activations (p.3) of this report.

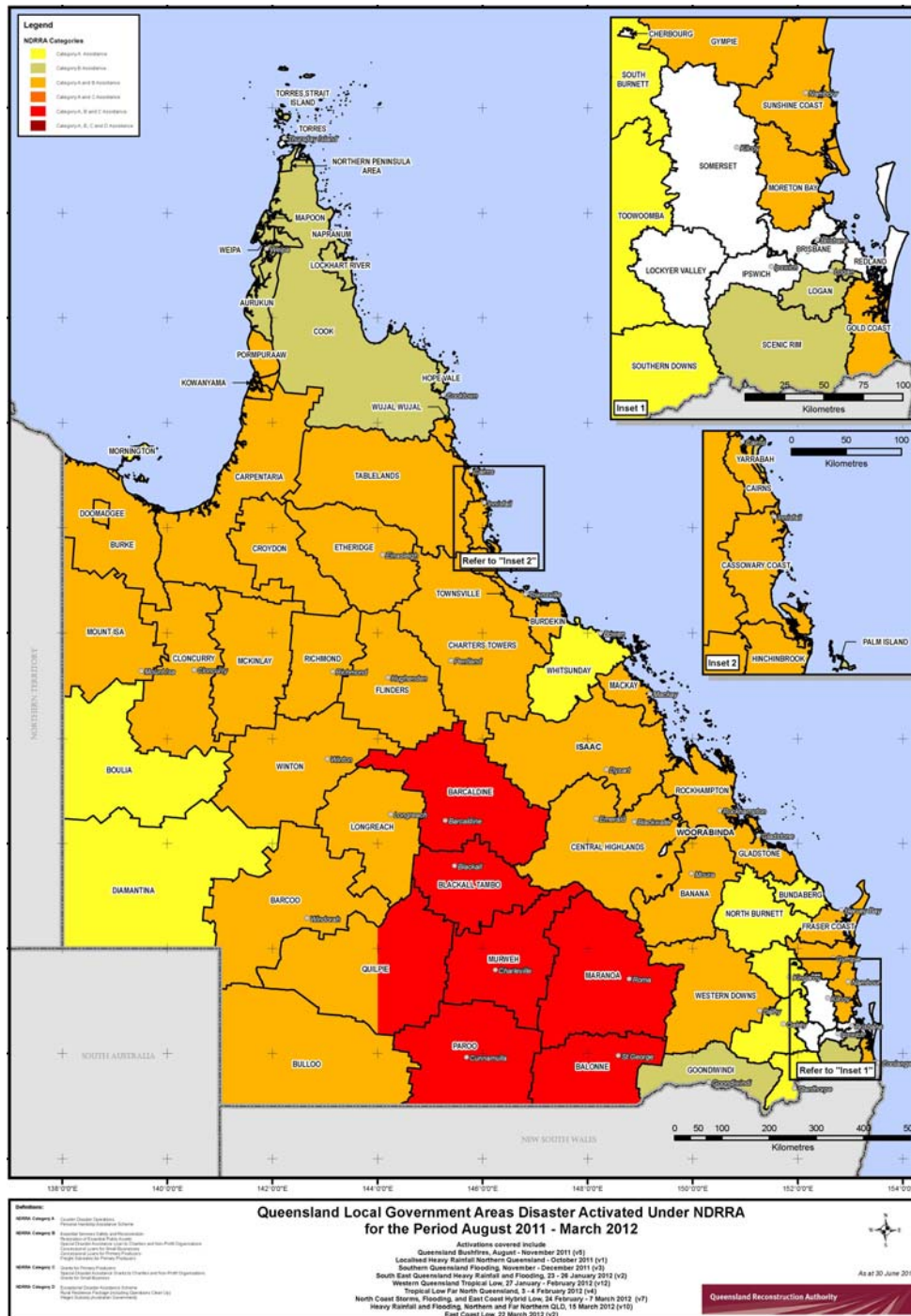
The values represent all applications approved by the Authority and grants/loans assistance paid under the Queensland Disaster Assistance Framework described in **Table 5.3**.

It is anticipated that the Authority will receive applications for restoration/CDO/emergent works and grants/ loans assistance for these events in the next few months. The Authority is continuing to revise the damage estimate for the 2011/2012 events and this will be included in future reports.

Key Developments since last report:

At 3 September 2012, the Authority had received 135 applications with a value of \$320 million. Total funding acquitted for individuals, small business, primary producers and charities and non-profit organisations amounts to \$14.89 million.

Map 2 - LGAs disaster activated under NDRRA for 2011-2012 events managed by the Authority



5.3 Queensland Disaster Assistance Framework

The available Queensland Disaster Assistance schemes are separated between NDRRA (jointly funded by the Commonwealth and State governments) and Non-NDRRA funding allocation. For reporting purposes, the schemes are divided into the sections outlined below.

Table 5.3 - Grant Assistance Available for Queensland Disasters

	NDRRA	Non-NDRRA
Individuals and families	Personal Hardship and Assistance Scheme (PHAS) Emergent Assistance Grants Essential Household Contents Grants Structural Assistance Grants Essential Services and Safety Reconnection (ESSR) Safety Inspections Repairs	Premier's Disaster Relief Appeal Australian Government Disaster Recovery Payments
Local Governments, State Departments and Agencies	Counter Disaster Operations Restoration of Essential Public Assets Queensland Local Council Package	
Small Businesses, Primary Producers and Charities and Non-Profit Groups	Concessional Loans Grants Freight Subsidies for Primary Producers Rural Resilience Fund Operation Clean-up Special Disaster Assistance Loans to Charities and Non-Profit Organisations Exceptional Concessional Loans	Disaster Income Recovery Subsidies Cyclone Yasi Wage Assistance Sport Flood Fight Back Scheme Tourism Industry Support Package Queensland Natural Disaster Jobs and Skills Package Racetrack Recovery Assistance Flood Recovery Program QLD Flood and Cyclone Legal Help



Section six: State of the State - Planning and Authority Projects

The Queensland Reconstruction Authority is legislatively empowered to perform accelerated planning, development and decision-making activities to expedite reconstruction and recovery efforts. This section provides an overview of these activities and an update on how they have been undertaken in the past month.

6.1 Planning

Floodplain Management Project

To assist Queensland's Councils, the Queensland Reconstruction Authority (the Authority) in collaboration with the former Department of Environment and Resource Management, developed a two-part toolkit *Planning for stronger, more resilient floodplains*.

- **Part 1** – *Interim measures to support floodplain management in existing planning schemes* provides Councils with a toolkit including mapping and planning scheme provisions that can be fast-tracked now into existing planning schemes.
- **Part 2** – *Measures to support floodplain management in future planning schemes* builds upon the work of Part 1 by providing further non-mandatory guidance on integrating floodplain management principles and land use strategies and responses into future planning schemes.

Together, Parts 1 and 2 aim to help Councils introduce consistent and specific planning controls to manage flood risks, a recommendation identified and supported in the Floods Commission of Inquiry's Final Report (QFCI).

Floodplain Mapping

Importantly, the toolkit includes the largest floodplain mapping exercise in the State's history and has provided a State-wide catchment based understanding of Queensland's floodplains – the first in the country.

The interim floodplain maps are not modelled, but drawn from evidence of past flooding, including soils, topography, stream flow gauge data and satellite imagery. This mapping represents a baseline or Level 1 mapping for the state of Queensland.

This project "Mapping Queensland's Floodplains" was recently acknowledged by the Institute of Public Administration Australia (Queensland Division) winning the Best Practice for State Government category at the 2012 awards.

Queensland Floods Commission of Inquiry

On 16 March 2012, the QFCI handed down its final report. The final report included 177 recommendations across a number of areas including land use planning, building controls, emergency management, mining and insurance. The work of the Authority particularly in relation to Grantham and the Floodplain project was commended by the QFCI.

On 7 June 2012, the Queensland Government tabled its detailed response to the Queensland Floods Commission of Inquiry (QFCOI) recommendations. The Authority has been nominated as lead agency for delivery of a number of these recommendations specifically those relating to Chapter 2: Floodplain Management.

Queensland Flood Mapping Program

As part of the Queensland Government's response to the QFCI, the Authority will lead the Queensland Flood Mapping Program (QFMP). The QFMP will implement a number of specific recommendations including 2.4, 2.5, 2.6, 2.11, 2.16 and 2.19. These recommendations relate to flood information and investigations, repository of flood data and the display of flood information.

Key deliverables of the QFMP include the development of the Queensland Flood Information Database - a central repository for flood information across the State, the Queensland Flood Information Portal - a web based interactive map that displays information drawn from the QFID.

In addition to the collation, storage and display of information, the Authority will undertake with the support of industry, flood investigations for up to 100 flood prone towns by the end of January 2013. These investigations will result in flood hazard maps being produced for a range of flood events (ie. 10%, 1%, 2%). Importantly, these maps will allow a better understanding of what further more detailed investigations may need to be undertaken as well as informing land use planning strategies that contribute to improved resilience to flooding.

Prior to the *Planning for stronger, more resilient floodplains* exercise, 65% of existing planning schemes in the State did not contain any flood mapping. These floodplain maps now provide, particularly for low-rates based Councils, the opportunity to better understand where flooding is likely to occur within their region.

Through ongoing collaboration with Councils, this exercise will result in a significant increase in the total number of planning schemes that include flood mapping and flood management provisions. In turn by understanding and planning for flooding, it improves the resilience of our built form and encourages the safety and wellbeing for our communities and individuals.

Flood Mitigation

The Authority is actively working with Central Highlands, Balonne and Maranoa Councils to providing advice on flood mitigation approaches. The Authority will be supporting these Councils to understand potential mitigation options including land use responses and structural mitigation works, prioritising a works schedule and identify appropriate funding sources including the South West Flood Mitigation Fund and the Royalties for the Regions – Flood Security Scheme.

Land Use Planning and Building Codes Taskforce

The Authority recently led a significant body of work on behalf of the National Land Use Planning and Building Codes Taskforce (Taskforce), a working group of the Standing Council on Police and Emergency Management (SCPEM) reporting to the Council of Australian Governments (COAG).

The project supports the *National Strategy for Disaster Resilience* including a nationwide review of land use planning and building codes as they relate to natural disasters. Four reports have now been delivered including a Vision Statement, Current State Review, Gap Analysis and a Roadmap. The Roadmap outlines the actions, including the requirement for State based Capability and Investment Plan's. The reports were endorsed by the National Emergency Management Committee on Friday 25 May 2012 and noted by SCPEM on Friday 29 June 2012.

The Taskforce has endorsed the National Capability and Investment Plan template developed by the Authority for use by all jurisdictions. The Capability and Investment Plan will underpin the development of a detailed Implementation Strategy in each State and Territory. The Queensland Capability and Investment Plan is underway utilising the template delivering clear direction on the actions that Queensland needs to prioritise.

Recovery and Reconstruction Projects

The Authority has been working with a number of Councils and organisations to support specific recovery projects and facilitate state agency input to streamline the approvals process.

Cardwell Esplanade and Marine Infrastructure Recovery Project

The Authority is an active member of the Cardwell Esplanade and Marine Infrastructure Recovery Project Steering Committee. On 26 June 2012, the Honourable Jeff Seeney MP, Deputy Premier and Minister for State Development, Infrastructure and Planning announced the \$32.47 million contract to reconstruct Cardwell had been awarded to See Civil Pty Ltd. Works on this project have now commenced and are expected to be completed by June 2013.

Works have also commenced on Dunk Island to restore Council assets within the camping ground. All works are expected to be completed prior to the September school holidays.

Tenders for design and construction of the Dunk Island and Clump Point jetties have been awarded to Civil Plus Pty Ltd. Works to restore the Dunk Island jetty will commence in October 2012, Clump Point Jetty replacement will commence in January 2013 will all works expected to be completed by June 2013.

Recovery Projects

The Authority continually provides assistance to a number of Councils supporting the streamlining of development applications associated with recovery and reconstruction projects. The Authority is actively supporting Brisbane City Council with a number of projects and will also support the approvals process for the RiverWalk and Ferry Terminals.

6.2 Damage Assessment and Reconstruction Monitoring - DARMsys™

A key success factor in recovery and rebuilding from natural disasters is undertaking structured and planned assessments of damage and commencing reconstruction as early as possible.

The devastating weather events in 2011 underlined the importance of gathering early, comprehensive and accurate damage assessment information on the extent of damage as soon as safely possible after the event.

The aim of DARMsys™ is to ensure the Queensland Government has the capability to undertake timely and accurate damage assessments and monitor the reconstruction effort in a way that enables the State to respond and recover as soon as possible from any future disaster event. Learn more at www.qldra.org.au/about/darmsys.

Assessments commenced in July 2011 and were undertaken by the Authority and Building Services Authority staff.

A total of 1,400 residential properties were damaged over the 2012 event period, consisting of:

- 832 - Western Queensland Floods
- 145 - Townsville Storm Event
- 108 - Sunshine Coast February Event
- 315 - Sunshine Coast March Event

(Source: the Authority June 2012)

Upcoming Reconstruction Monitoring:

Townsville Storm

- September 2012

Western floods

- October 2012

Western Floods Region Flooding Update

(February 2012 event)

Data from the July 2012 Western Floods region audit indicates that:

- Of the 1,699 buildings assessed in the Western Floods region, 90.2% (1,533) are no longer damaged, have been repaired, or have work commenced. This is up from 69% (1,172) in the March 2012 audit.
- The Authority has planned a reconstruction audit for this region to be conducted in October 2012 targeting 358 properties (includes 96 in Mitchell and 224 in Roma)

Sunshine Coast Region Flooding Update

(February & March 2012 events)

The Authority completed reconstruction audits for this on 29 August 2012.

Data from the August 2012 Sunshine Coast Region audit indicates that:

- Of the 2,197 buildings assessed in the Sunshine Coast region 99.1% (2,177) are no longer damaged, are repaired, or have had work commenced.
- 44 properties remain damaged with 24 having work underway.
- The Authority has no more planned reconstruction audits for the Sunshine Coast region.

Townsville Storm Update

(March 2012 event)

The Authority completed planned reconstruction audits in the Townsville Storm region between 18-21 June 2012.

Data from the June 2012 Townsville Storm region audit indicates that:

- Of the 247 buildings assessed for the Townsville Storm, 83.8% (207) are no longer damaged, repaired, or have work commenced. This is up from the 162 damaged from the March event.
- The Authority has a planned reconstruction audit for this region to be conducted in September 2012, targeting 65 properties.

(Source: the Authority September 2012)

Appendix A: Local Government Areas by Region

