

QUEENSLAND RECONSTRUCTION AUTHORITY

Monthly Report

January 2015

Document details:

Security classification	Public
Date of review of security classification	January 2015
Authority	Queensland Reconstruction Authority
Author	Chief Executive Officer
Document status	Final
Version	1.0

Contact for Enquiries:

All enquiries regarding this document should be directed to:

Queensland Reconstruction Authority

*Phone the call centre - **1800 110 841***

Mailing Address

Queensland Reconstruction Authority

PO Box 15428

City East Q 4002

Alternatively, contact the Queensland Reconstruction Authority by emailing info@qldra.org.au

Licence

This material is licensed under a [Creative Commons - Attribution 3.0 Australia licence](#).



The Queensland Reconstruction Authority requests attribution in the following manner:

© The State of Queensland (Queensland Reconstruction Authority) 2011-2014

Information security

This document has been classified using the [Queensland Government Information Security Classification Framework \(QGISCF\)](#) as PUBLIC and will be managed according to the requirements of the QGISCF.

Message from the Chief Executive Officer

Major General Richard Wilson AO (Ret'd)
Chairman
Queensland Reconstruction Authority

Dear Major General Wilson

It is with pleasure that I present the January 2015 Monthly Report – the 47th report to the Board of the Queensland Reconstruction Authority (the Authority).

The Authority was established under the *Queensland Reconstruction Authority Act 2011* following the unprecedented natural disasters which struck Queensland over the summer months of 2010-11. The Authority is charged with managing and coordinating the Government's program of infrastructure renewal and recovery within disaster-affected communities, with a focus on working with our State and local government partners to deliver best practice expenditure of public reconstruction funds. Since its establishment, the role of the Authority has subsequently been extended to cover historical and continuing disaster events in Queensland.

The January report provides an update on the progress of recovery. Following the passing of the timeframe for delivery of much of the reconstruction works arising from the 2011 and 2012 events, the Authority is currently focused on closing out the massive volume of works completed up to 30 June 2014 for acquittal to the Commonwealth. The majority of these works have now passed through the Authority's close out processes and are currently subject to audit review ahead of acquittal to the Commonwealth in mid-2015. Concurrently, the Authority is also actively managing delivery of the considerable program of works remaining from Tropical Cyclone Oswald and other events of 2013 and 2014 through the damage assessment, submission preparation and approval and delivery phases.

The Authority also remains prepared to respond should disaster strike in the current 'disaster season'. Since the last report, the first 2015 events have been activated - *Central Queensland Heavy Rainfall & Flooding, 8-14 December 2014* and *Brisbane Severe Thunderstorm, 27 November 2014*.

Inclusive of these tasks, the Authority is managing a total program of works for events from 2009 through to 2014 with an estimated total cost of \$13.33 billion. As at 5 January 2015:

- an additional \$37 million in submissions have been received by the Authority since last month
- an additional \$255 million has been processed by the Authority since last month
- a cumulative value of \$12.45 billion of the \$13.33 billion works program (2009 to 2014) has been reported to the Authority as being in progress or delivered by delivery agents as at 30 November 2014.

The January report provides updates on the progress of major reconstruction projects underway and highlights Cassowary Coast Regional Council's Tully Gorge Road reconstruction project which was damaged by Tropical Cyclone Ita in early 2014, and the recent reopening of Kenilworth–Brooloo Road in the Sunshine Coast hinterland, closed for six months during reconstruction following severe landslip damage caused by the 2013 events. The report also highlights the recent recognition of the Queensland Flood Mapping Program at the 2014 Resilient Australia Awards. Since it was initiated by the Authority and Department of Natural Resources in 2011, the program has assisted over 100 flood prone towns with a rapid hazard assessment and fit-for-purpose flood mapping.

I commend the report to you and recommend its release to the Minister and the public pursuant to Section 41 of the *Queensland Reconstruction Authority Act 2011*.

Yours sincerely



Frankie Carroll
Chief Executive Officer
Queensland Reconstruction Authority

Contents

1.0 Introduction	1
1.1 Background	2
1.2 Purpose	2
1.3 Timing	2
2.0 Disaster Assistance	3
2.1 Queensland Disaster Assistance Framework	4
2.2 Disaster assistance by event period	5
2.3 Events managed by the Authority	6
2.4 Additional assistance measures	7
2.4.1 Betterment fund	7
2.4.2 Other assistance measures	7
3.0 Program Status	8
3.1 Recent developments	9
3.2 Combined program status	9
3.3 Program of works expenditure	9
3.4 State-wide pipeline of works	10
3.5 State-controlled roads and highways	11
3.6 Betterment fund status	12
4.0 Progress Reports	13
4.1 Iconic projects in reconstructing Queensland	14
4.2 Program spotlights	16
5.0 Communications	18
5.1 Communicating progress	19
5.2 Media reports	20
<u>Appendices</u>	
Appendix A: Local Government Areas by Region	22

Section one:
Introduction



1.0 Introduction

1.1 Background

Queensland has been struck by a series of unprecedented natural disasters in recent years. Between November 2010 and April 2011, extensive flooding caused by periods of extremely heavy rainfall, destruction caused by a number of storm cells including Cyclones Tasha, Anthony and Severe Tropical Cyclone Yasi and subsequent monsoonal flooding, resulted in all of Queensland being declared as disaster affected.

On 21 February 2011 in response to the 2011 disaster events, the Queensland Government established the Queensland Reconstruction Authority (the Authority) under the *Queensland Reconstruction Act 2011*. The Authority's role was subsequently extended to cover historical and continuing disaster events in Queensland.

The Authority has since been given responsibility to administer Natural Disaster Relief and Recovery Arrangements (NDRRA) for the large scale natural disaster caused by Tropical Cyclone Oswald in late January 2013 and additional events which have occurred in the 2013, 2014 and 2015 disaster event periods. The *Queensland Reconstruction Authority Amendment Bill 2013* was passed on 14 February 2013 to expand the jurisdiction of the Authority to include the 2013 events.

1.2 Purpose

The Authority's mission is **to reconnect, rebuild and improve Queensland communities and its economy**.

The Authority is charged with managing and coordinating the Government's program of infrastructure renewal and recovery within disaster-affected communities, with a focus on working with our State and local government partners to deliver best practice expenditure of public reconstruction funds.

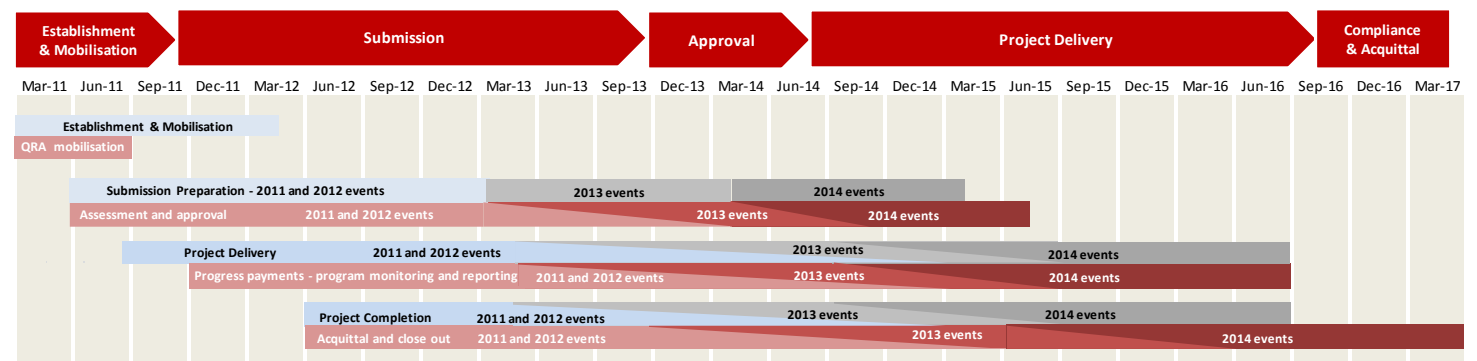
The Authority operates with reference to recovery and reconstruction plans established by the State in response to the 2011 disaster events and more recently following Tropical Cyclone Oswald in 2013 and Severe Tropical Cyclone Ita in 2014. Most recently, the Severe Tropical Cyclone Ita Recovery Plan (Recovery Plan), provides strategic guidance for the coordination and management of recovery, reconstruction and community resilience activities undertaken across the State after the flood and damage impacts of Severe Tropical Cyclone Ita.

1.3 Timing

The Authority's priorities are currently progressing the acquittal of the massive program of works from the 2011, 2012, 2013 and 2014 disaster periods completed prior to 30 June 2014. These works include a significant body of reconstruction works from the 2011 and 2012 disaster periods and other reconstruction and recovery works from the 2013 and 2014 periods completed by that date. The majority of these works have now passed through the Authority's close out processes and the Authority is currently working with the QAO to progress its audit of the draft claim prior to acquittal of the works via lodgement of a final audited claim to the Commonwealth in mid-2015.

The Authority is also assisting delivery agents prepare outstanding submissions from the 2014 events, and monitoring of the remaining 2012, 2013 and 2014 programs into, and through, the project delivery phase as soon as practicable.

With the recent activation of 2015 events, the Authority is also liaising with relevant delivery agents to assist with damage assessments and submission preparation, and remains prepared to respond should additional disasters strike in the current 'disaster season'.



Section two:
Disaster Assistance

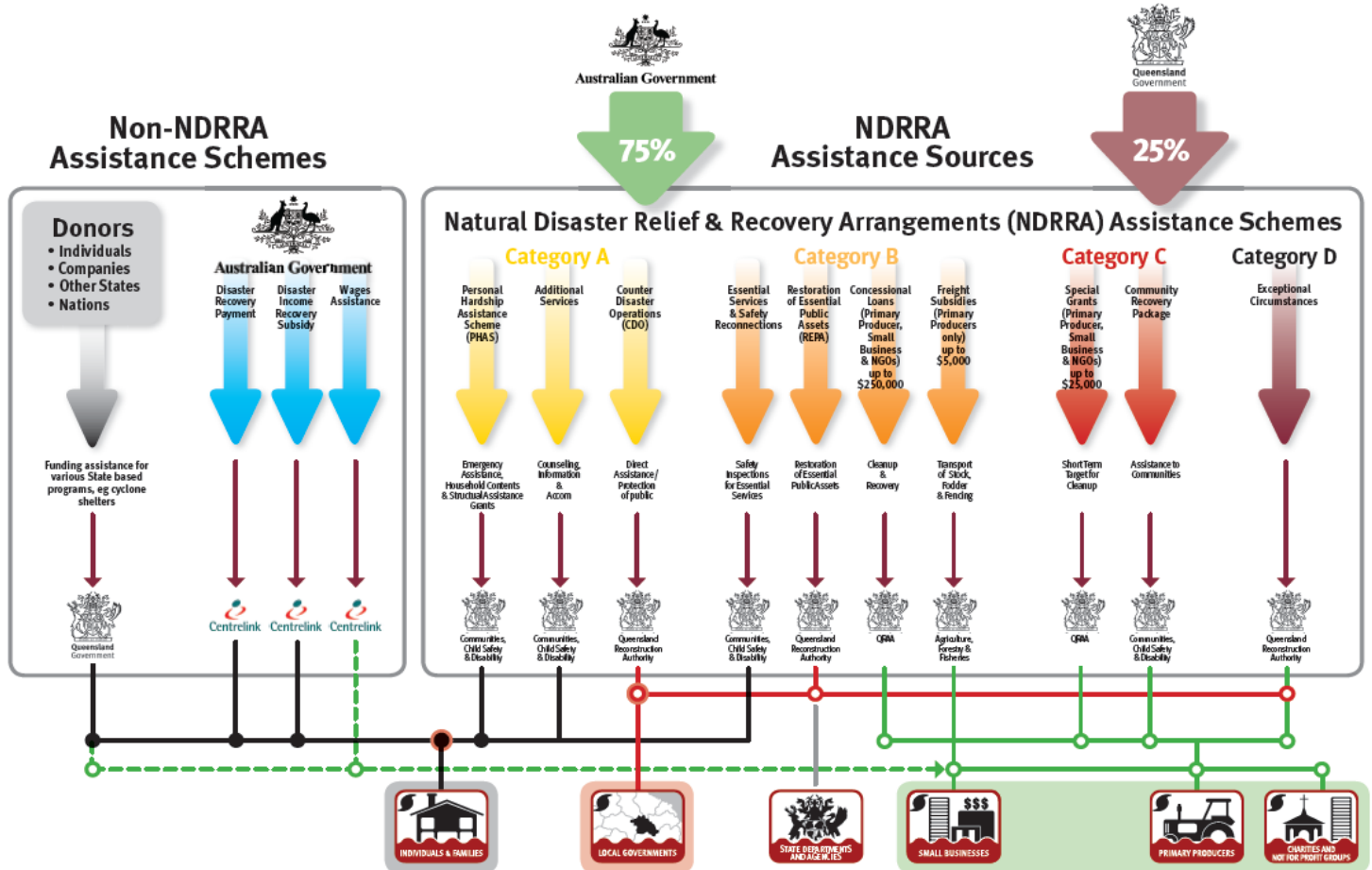


2.0 Disaster Assistance

2.1 Queensland Disaster Assistance Framework

The available Queensland Disaster Assistance schemes are separated between NDRRA (jointly funded by the Commonwealth and State governments) and Non-NDRRA funding schemes. The diagram below indicates the different elements of assistance available and how each element operates.

Figure 2.1.1 Queensland Disaster Assistance Framework



Whilst elements of the assistance schemes are delivered by other State agencies, all of the NDRRA assistance sources (and elements of the non-NDRRA assistance schemes) are administered by the Authority for historical and continuing disaster events in Queensland.

Disaster events managed by the Authority

The list of the activated disaster events managed by the Authority are set out in **Section 2.3** and can also be found on www.disaster.qld.gov.au.

The maps opposite show the LGAs activated for relief measures under NDRRA for each event period under the Queensland Disaster Assistance Framework.

This report includes references to event periods described as follows:

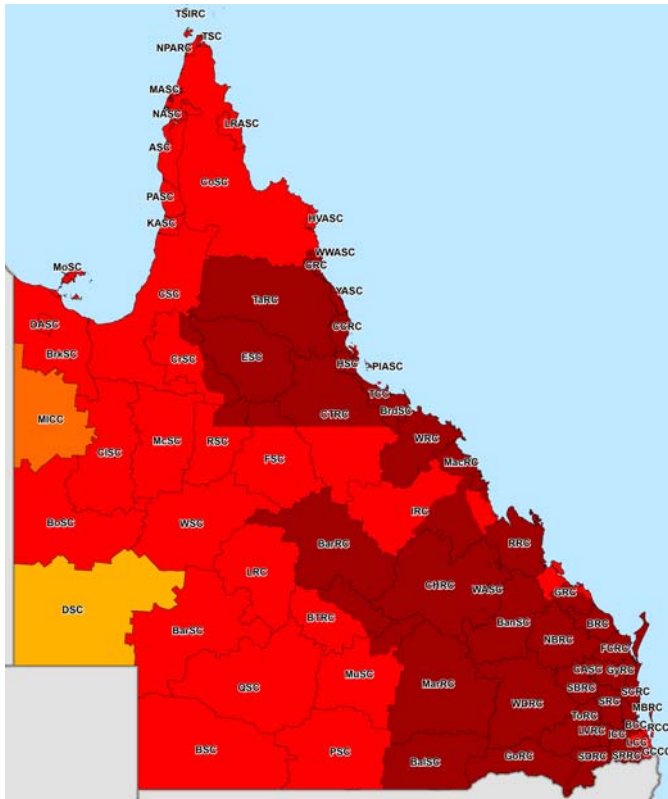
- **2015 events:** Activated disaster events managed by the Authority which occurred in the financial year ended **30 June 2015**
- **2014 events:** Activated disaster events managed by the Authority which occurred in the financial year ended **30 June 2014**
- **2013 events:** Activated disaster events managed by the Authority which occurred in the financial year ended **30 June 2013**, including Tropical Cyclone Oswald and associated rainfall and flooding (January 2013)
- **2012 events:** Activated disaster events managed by the Authority which occurred in the financial year ended **30 June 2012**
- **2011 events:** Activated disaster events managed by the Authority which occurred in the financial year ended **30 June 2011**, including Tropical Cyclone Yasi and Queensland flooding (November 2010 to February 2011)
- **2009-2010 events:** Activated disaster events managed by the Authority which occurred prior to 30 June 2010
- **Combined Program:** relates to all the activated disaster event programs managed by the Authority.

2.0 Disaster Assistance

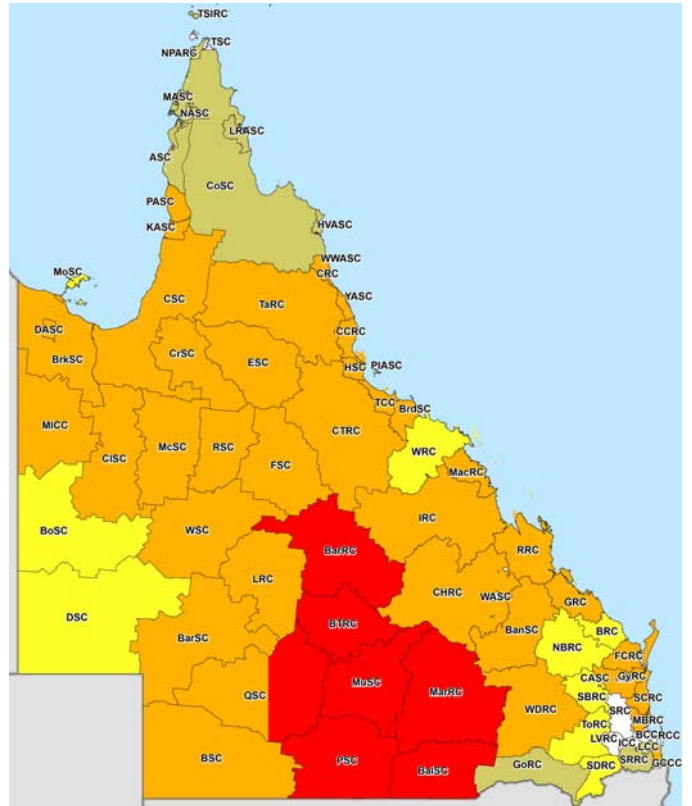
2.2 Disaster assistance by event period

The maps below show the LGAs activated for relief measures under NDRRA for each event period managed by the Authority under the Queensland Disaster Assistance Framework.

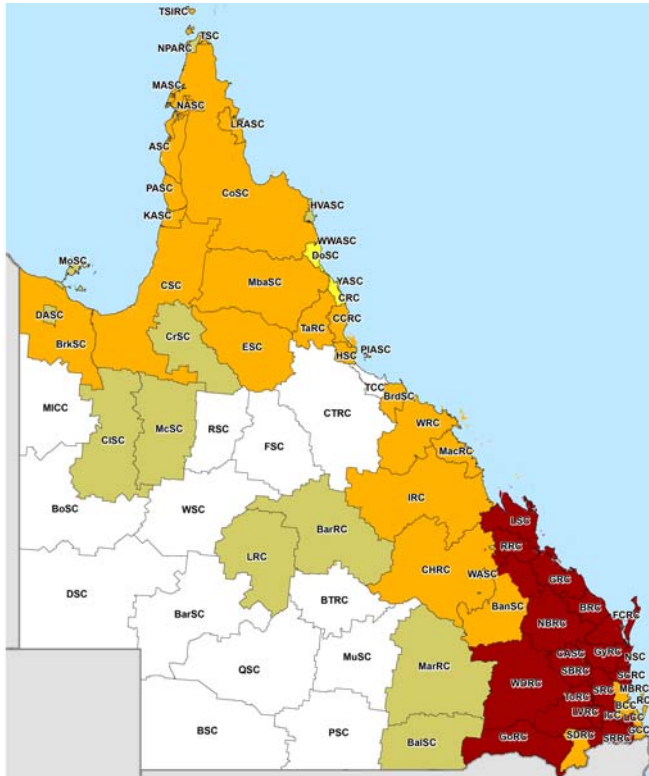
Map 1 - LGAs disaster activated under NDRRA for 2011 events



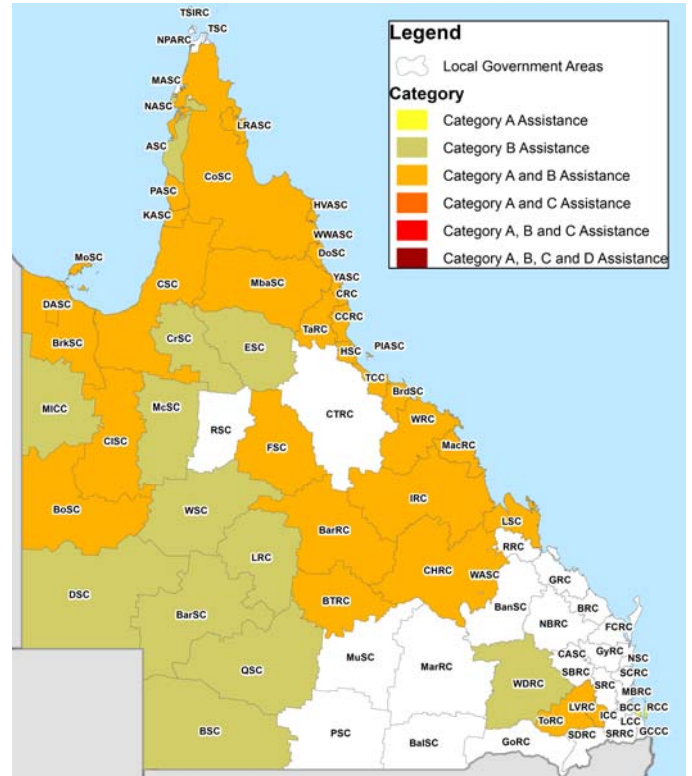
Map 2 - LGAs disaster activated under NDRRA for 2012 events



Map 3 - LGAs disaster activated under NDRRA for 2013 events



Map 4 - LGAs disaster activated under NDRRA for 2014 events



To date, Brisbane City Council and Banana Shire Council have been activated for relief measures for **2015 events**.

* Refer Appendix A for glossary of LGA abbreviations

2.3 Events managed by the Authority

The Authority has responsibility to administer NDRRA relief measures for historical and continuing disaster events in Queensland. The Authority currently manages and coordinates the infrastructure reconstruction and recovery for 28 disaster events activated for NDRRA relief measures since the Authority's establishment in February 2011 and the remaining program of works for an additional 16 disaster events which occurred prior to the Authority's establishment.

Activations for the two 2015 events to date have both occurred since the last report.

2015 events:

- Central Queensland Heavy Rainfall & Flooding, 8-14 December 2014
- Brisbane Severe Thunderstorm, 27 November 2014

2014 events:

- Tropical Cyclone Ita & Associated Rainfall & Flooding, 11-14 April 2014
- Tropical Cyclone Gillian - 10 to 11 March 2014
- Central Coast & Southern Queensland Trough, 26-30 March 2014
- Central & Western Queensland Flooding & Rainfall, 18-28 February 2014
- North East Queensland Monsoonal Rainfall & Flooding - 7 to 9 February 2014
- Tropical Cyclone Fletcher, commencing 2 February 2014
- Far North Queensland Peninsula Flooding (27-31 January 2014)
- Tropical Cyclone Dylan, 31 January 2014
- North Stradbroke Island Fires, commencing 29 December 2013

2013 events:

- South West Queensland Wildfires, 21 December 2012
- Far Northern Queensland Bushfires, late October - December 2012
- Tropical Cyclone Oswald and Associated Rainfall & Flooding, 21-29 January 2013 *
- Longreach Flood, 18 February 2013 #
- Central & Southern Queensland Low, 25 February - 5 March 2013 #

2012 events:

- Queensland Bushfires, August to October 2011
- Localised Heavy Rainfall Northern Queensland, October 2011 *
- Southern Queensland Flooding, November to December 2011*
- South East Queensland Heavy Rainfall and flooding, 23- 26 January 2012 *
- Western Queensland Tropical Low, January - February 2012 *
- Far Northern Queensland Tropical Low, 3-4 February 2012 *
- North Coast Queensland Storms and flooding and East Coast Hybrid Low, 24 February - 7 March 2012 *

2012 events (continued):

- Northern and Far Northern Queensland Heavy Rainfall & flooding, 15 March 2012 *
- East Coast Low, 22 March 2012 *

2011 events:

- Queensland Flooding and Tropical Cyclones Tasha and Anthony, November 2010 to February 2011*
- Severe Tropical Cyclone Yasi on 2 February 2011*
- Queensland Monsoonal Flooding Event, 8 February 2011*
- South West Flooding, April 2011*

2007-2010 events managed by the Authority:

- South East and North Coast Queensland East Coast Low, August 2007
- South West Queensland storms and flooding, 23-30 November 2007
- Central Western Queensland storms and flooding, 22-30 December 2007
- South East Queensland East Coast Low, 27 December 2007 - 7 January 2008
- Queensland Monsoonal flooding, January 2008
- Queensland Monsoonal flooding, February March 2008
- South West Queensland flooding, June 2008
- Queensland storms and associated flooding, 16-22 November 2008
- Queensland Monsoonal flooding and Tropical Cyclone Charlotte and Ellie, January - February 2009
- South East Queensland Low, May 2009
- Queensland Bushfires, September - October 2009
- South West Flooding, 20 - 25 November 2009
- Northern, Central and South West Queensland Flooding, 22 December 2009 to 8 January 2010
- Queensland Monsoonal Flooding and Tropical Cyclones Olga, Neville, Ului and Paul, January to April 2010
- South West Queensland Low and Associated Flooding, September 2010
- 2010 South East Queensland Flooding, 9-12 October 2010.

The maps on the preceding page show the LGAs activated for relief measures under NDRRA for each event period managed by the Authority under the Queensland Disaster Assistance Framework.

* Events covered under the National Partnership Agreement for Natural Disaster Recovery and Reconstruction (NPA) between the State and Commonwealth Government signed 8 February 2013 (NPA Events).

Pending agreement to extend the NPA to include two additional 2013 events - Longreach Floods, 18 February 2013 and Central and Southern Queensland Low, 25 February - 5 March 2013.

2.4 Additional assistance measures

The State Government in conjunction with the Commonwealth have activated a range of jointly-funded Category C, Category D and other relief measures to alleviate distress due to the impact of Tropical Cyclone Oswald and the 2011 events. The measures are summarised below:

2.4.1 Betterment fund

On 8 February 2013, the Queensland Government signed the National Partnership Agreement (NPA) with the Commonwealth Government which recognised the need for a more streamlined process for the approval of Betterment funding. The Queensland Government announced a \$40 million commitment to Betterment funding which will match the Commonwealth Government contribution, resulting in the establishment of the \$80 million Betterment Fund.

In August 2013, the Betterment fund was extended beyond its original coverage of LGAs declared for NDRRA assistance for Tropical Cyclone Oswald to also cover LGAs declared for the two additional disaster events that occurred through to June 2013 (Longreach Flood (18 February 2013) and Central and Southern Queensland Low (25 February to 5 March 2013)). The Betterment fund is available for the restoration or replacement of essential public assets to a more disaster resilient standard than their pre-disaster standard. The intent of betterment is to increase the resilience of communities to natural disasters, while at the same time reducing future expenditure on asset restoration, reducing incidents, injuries and fatalities and improving asset utility during and after disaster events.

Where a damaged asset is approved as a betterment project, the normal cost of restoring or replacing the asset to its pre-disaster standard will continue to be funded under Category B of NDRRA assistance and the incremental cost to 'better' the asset to a more disaster-resilient standard will be financed from the Betterment fund. The status of the Betterment fund is set out in Section 3.7 of this report.

2.4.2 Other assistance measures

Tropical Cyclone Oswald

- **Community Recovery Package - \$5 million** - Funding for community development officers in the hardest hit communities of Bundaberg and North Burnett, support for mental health services and a flexible fund that assists communities to implement engagement and development activities.
- **Clean Up and Recovery program - \$10 million** - Program to assist primary producers to clear debris and restore fencing in the worst affected areas; to maintain workers while income generating activities are reduced and to clear debris from watercourse that poses a hazard to downstream infrastructure and activities.
- **Industry Recovery Officers - \$1.5 million** - Placement of Industry Recovery Officers to assist business and primary producers recover from flooding.
- **Enhanced concessional loans and grants** - Loans of up to \$650,000 (with a grant component of up to \$50,000) are available to applicants that have suffered extreme damage such that the existing concessional loan and recovery grants under NDRRA category B and C are insufficient to support recovery.
- **Environmental Recovery program - \$10 million*** - Program to fund existing programs to conduct flood specific clean up and soil conservation work following the 2013 flooding.
- **Rural Financial Counselling Services - \$1.5 million*** - Provision of financial planning advice for rural businesses and primary producers to assist in the recovery of local economies following the disaster.
- **Other measures - \$4.9 million** to fund dredging works to restore Bundaberg Port to its pre-2013 flood clearance depths; and **\$900,000** to assist Bundaberg Regional Council meet the cost of recovery works for community parks and gardens.

2011 events

- **Queensland Local Council Package - \$315 million** - Funding to help local councils repair utilities and infrastructure, and support their efforts in recovering from the floods and Cyclone Yasi. The package comprises two components: \$265 million to fast-track the repair of damaged infrastructure, including the Strengthening Grantham project, Brisbane ferry terminals and Riverwalk; and \$50 million to contribute to regional and remote councils employing people to perform important clean-up and repair work.
- **Cassowary Coast Support Package - \$15 million** - Funding to restore vital council infrastructure and restore natural vegetation and beach damage in the Cassowary Coast region. Specifically, the Support Package provides for the repair of Dunk Island Jetty, the repair of Clump Point Jetty and the restoration of Cardwell beach foreshore and its natural vegetation.
- **Exceptional Disaster Assistance Scheme** - Concessional interest loans of up to \$650,000, with grant component of up to \$50,000, to eligible businesses, primary producers and not-for-profit organisations that suffered extreme damage.

In addition, the State Government and Commonwealth have agreed to an extended Day Labour Trial, which enables councils to deliver restoration works with their own workforce on condition that they provide evidence of savings in both time and cost.

* Non-NDRRA measures funded 50% by the State and 50% by the Commonwealth; Commonwealth share is being delivered directly through existing Commonwealth programs.

Section three:

Program Status



3.0 Program Status

3.1 Recent developments

The timeframe for councils and state agencies to complete much of the works from the devastating floods and cyclones of early 2011 and the series of events which impacted the state in the summer of 2011-12 passed on 30 June 2014 and the Authority is currently undertaking the considerable task to close out and acquit the massive volume of works completed prior to 30 June 2014 on the 2011, 2012, 2013 and 2014 events for acquittal in the 2013-14 Commonwealth Claim. The majority of these works have now passed through the Authority's close out processes and the Authority is currently working with the QAO to progress its audit of the draft claim prior to acquittal of the works via lodgement of a final audited claim to the Commonwealth in mid-2015.

Whilst the delivery phase of much of the 2011 and 2012 event programs has now passed, the Authority's focus on delivery remains as there is still a significant program of works from Tropical Cyclone Oswald and other events of 2013 and 2014 to manage through the damage assessment, submission preparation and approval and delivery phases.

The Authority also remains prepared to respond should disaster strike in the current 'disaster season'. Since the last report, the first 2015 events have been activated - *Central Queensland Heavy Rainfall & Flooding, 8-14 December 2014* and *Brisbane Severe Thunderstorm, 27 November 2014*.

3.2 Combined program status

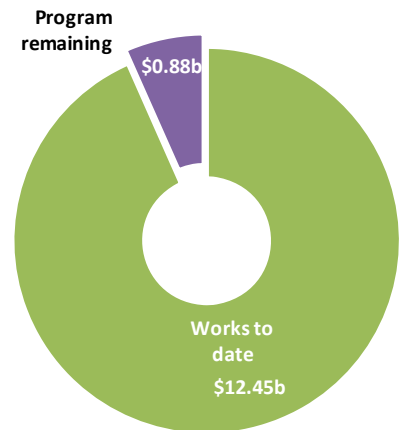
Following the September 2014 NDRRA estimates review process, the estimated program of works for all events actively managed by the Authority (2009 to 2014) is \$13.33 billion.

The estimated cost of the damage from the 2014 Events is \$455 million, the damage from the 2013 Events is estimated to be \$2.0 billion and the cost of the 2011 and 2012 Events is estimated to be \$6.8 billion and \$1.6 billion respectively. The cost of the 2009-10 Events managed by the Authority has been finalised at \$2.4 billion following acquittal of the balance of these programs in the 2012-13 Commonwealth Claim.

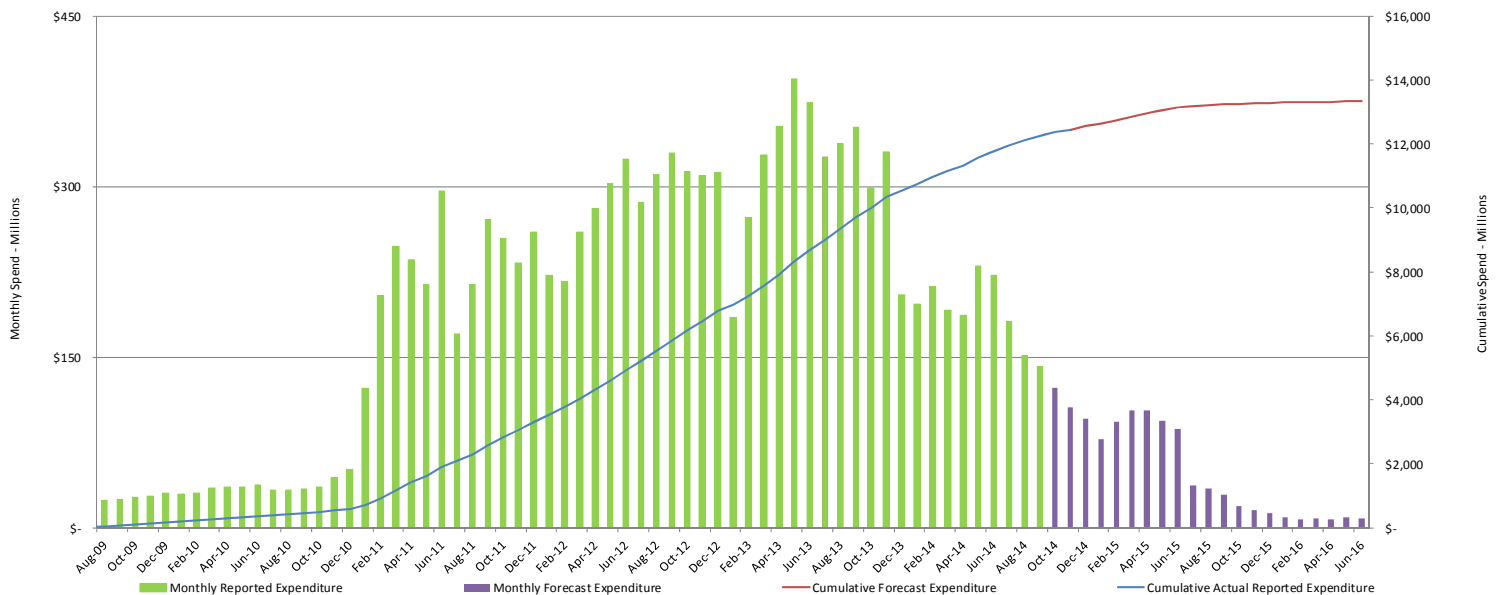
Program estimates for the two 2015 events which have occurred since the September 2014 review will be developed as part of the next regular estimates review process, which is due to commence in February 2015.

Since the last report, the combined program of works for all events managed by the Authority has progressed as follows:

- a cumulative value of \$18.1 billion in submissions have been received by the Authority to 5 January 2015, an increase of \$37 million since last month
- a cumulative total of \$17.8 billion has been processed by the Authority to 5 January 2015, an increase of \$255 million since last month
- a cumulative value of \$12.45 billion of the revised \$13.33 billion works program (2009 to 2014) has been reported to the Authority as being in progress or delivered by delivery agents as at 30 November 2014.



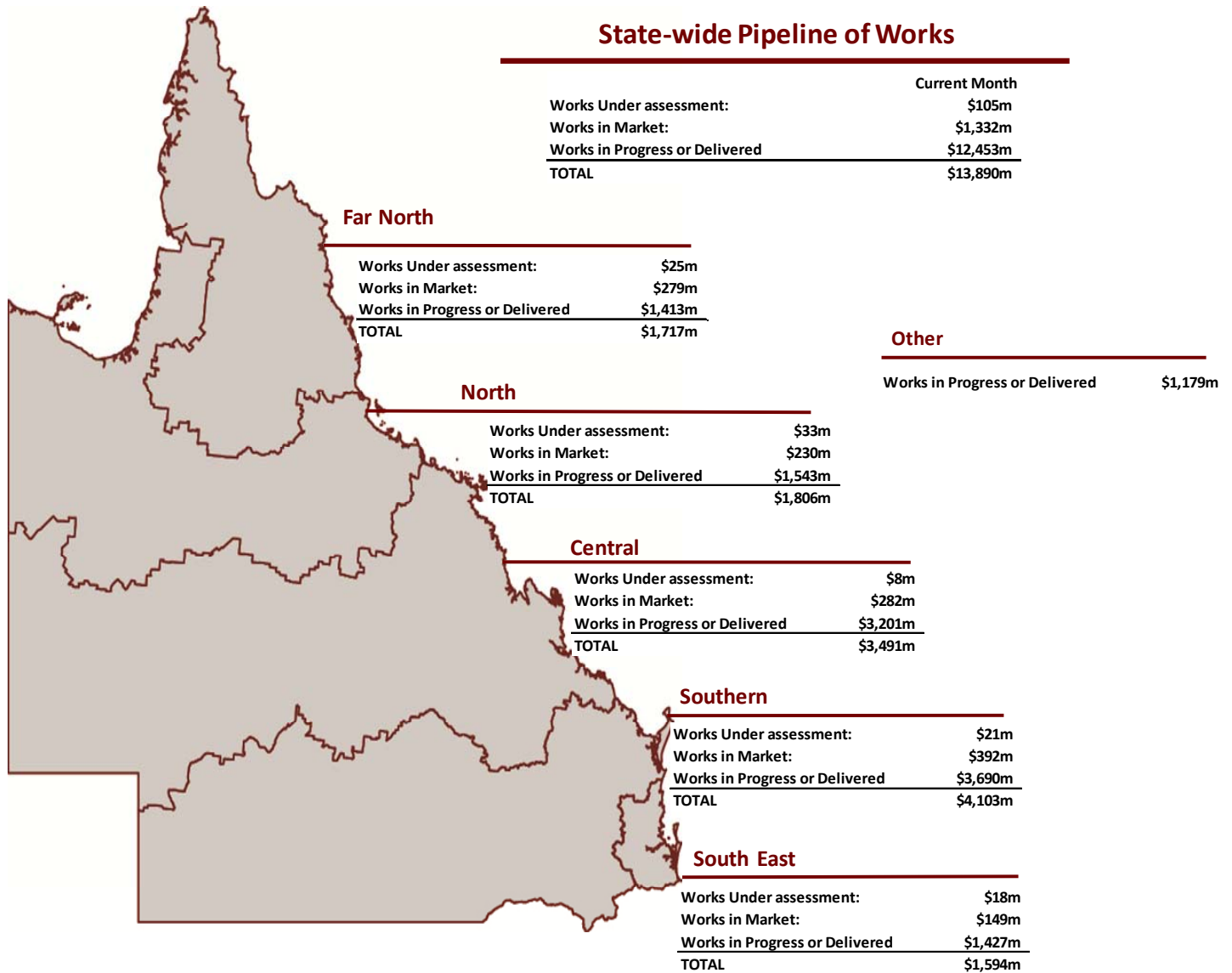
3.3 Program of works expenditure



Source: the Authority - September 2014 NDRRA Estimates Review & 5 January 2015

3.4 State-wide pipeline of works

Following completion of the September 2014 NDRRA estimates review process, the Pipeline of works for events actively managed by the Authority (2009 to 2014) has a revised estimated program value of \$13.33 billion, the status of which is set out below.



Source: DTMR at 30 November 2014; & Authority at 5 January 2015

Note:

1. Works Under Assessment and Works in Market represents data as at 30 November 2014 (DTMR) and 5 January 2015 (LGAs and Other). Works in Progress or Delivered represents spend by delivery agents to 30 November 2014 as reported to the Authority at 5 January 2015. Additional works have been conducted but are yet to be reported to the Authority
2. Other encompasses SDAs other than DTMR as well as the 2011 and 2013 Other Assistance.

Pipeline of Works Definitions

Stage	Description
Works under Assessment	Applications for packages which are currently under assessment by the Authority or are awaiting additional information from the applicant.
Works In Market	Estimate of spend remaining on works in progress and packages which have been approved by the Authority and are in the tender or contract process.
Works in Progress or Delivered	Expenditure as reported to the Authority on packages in progress or delivered.

Source: DTMR at 30 November 2014; and the Authority at 5 January 2015

3.5 State-controlled roads and highways

DTMR's Transport Network Reconstruction Program (TNRP) manages the recovery and reconstruction of Queensland's integrated transport system to reconnect Queensland communities and economies following the damage from natural disaster events in 2010, 2011, 2012 and 2013.

DTMR's reconstruction program as a result of the natural disasters of 2014 is being scoped and will be provided in future reports.

The transport system includes state-controlled roads, ports, navigation aids and the rail network.

The current state of activity:

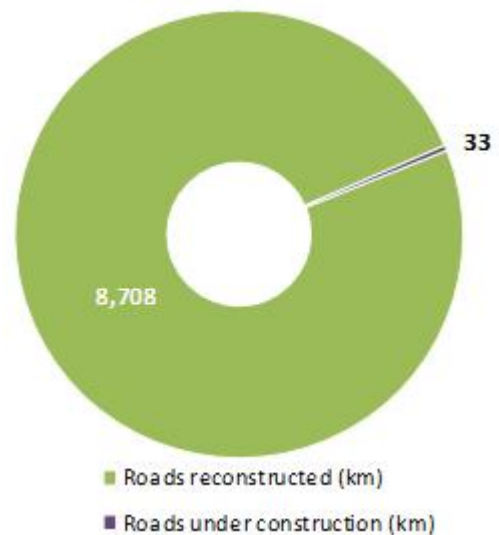
- **Roads** – \$6.3 billion of projects have been completed for both recovery and reconstruction works for works resulting from the disaster periods of 2010 to 2014 and \$151 million of reconstruction works are currently underway. Of the 8,741m of roads which DTMR plans to reconstruct following damage from the 2010 to 2013 natural disaster events*, 8,708km had been completed to 30 November 2014 and a further 33km of road is under construction on active works contracts. *See Figure 3.6.1 TNRP Summary map.*
- **Rail** – All Queensland Rail lines closed or affected by natural disaster events have been recovered.
- **Maritime** – repairs have been required to navigation aids, jetties and other boating infrastructure following natural disasters from 2010 to 2013. The events of 2013 affected seven ports (all of which have since been reopened without restriction) and damaged or destroyed 348 aids to navigation, of which 347 have since been recovered and 1 temporarily fixed.

Key achievements:

- As at 30 November 2014, DTMR has spent more than \$6.6 billion on recovery and reconstruction of the transport network across the State arising from the natural disaster events that occurred between 2010 and 2014.
- There was 58km of damaged roads reconstructed in November 2014 bringing the total reconstructed since the program commenced to 8,708km (>99%) of the total damaged roads which DTMR plans to reconstruct from the 2010 to 2013 events*.
- With the majority of works completed or under construction, only a small number of project valued at approximately \$537,000 commenced in November 2014 including two 2013 event projects in the Far North region.
- Construction was completed on 28 projects valued at approximately \$70 million in November 2014 including works on the Bunya, Gore, Moonie and Warrego Highways in the Darling Downs district; 15 projects in the Far North region including a significant project on the Gulf Developmental Road; works on the Dawson Highway and Burnett Highway (Biloela to Mount Morgan) in the Fitzroy district; and the Halifax–Bemerside Road project in DTMR's Northern district.

* reported kms to reconstruct represent works from damage caused by events in 2010, 2011, 2012 and 2013. Reporting on scope of reconstruction works from 2014 events will be provided in future reports following finalisation of TMR's reconstruction program for 2014 events.

Fig.3.6.1 Roads damaged/reconstructed - 2010 to 2013 events*



Above: El Arish–Mission Beach Road – pavement reconstruction

(Source: DTMR, 30 November 2014)

Fig.3.5.2 TNRP summary of reconstruction works to date - November 2014

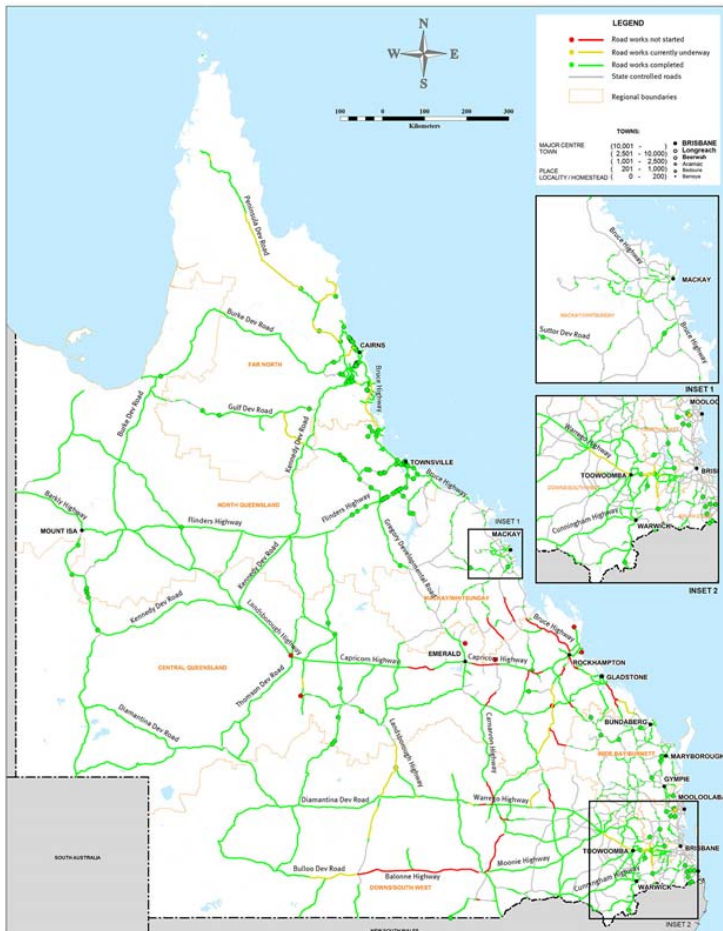
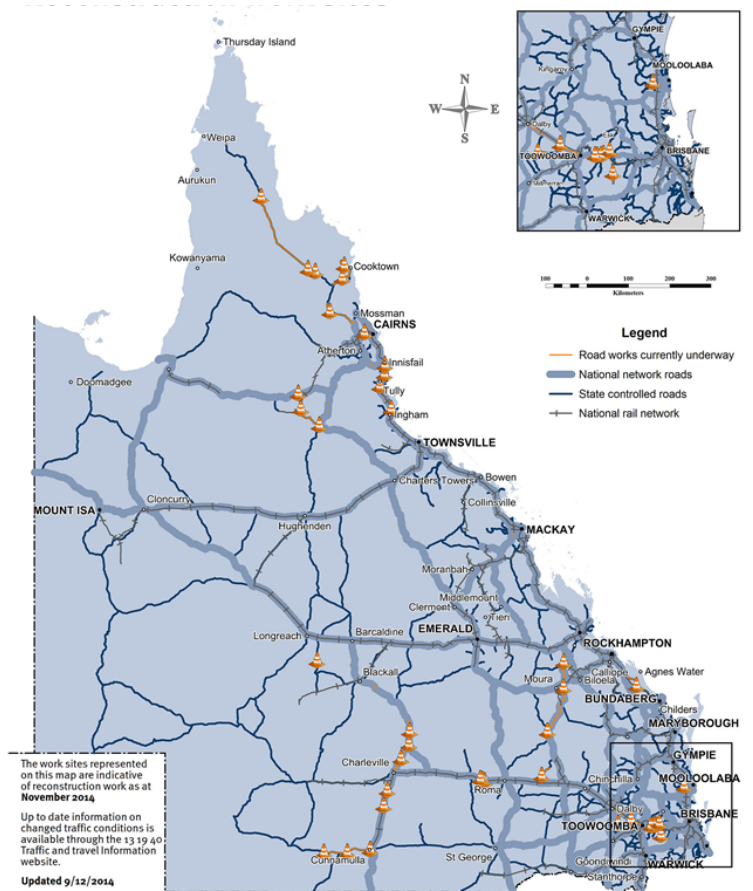


Fig 3.5.3 TNRP reconstruction work sites - November 2014



(Source: DTMR 30 November 2014)

3.6 Betterment fund status

The \$80 million Betterment fund is a Category D relief measure available to LGAs that have been declared for NDRRA assistance for the flood, storm and cyclone disaster events that occurred in Queensland in early 2013 for the restoration or replacement of essential public assets to a more disaster resilient standard than their pre-disaster standard.

The Betterment Fund was announced in February 2013 following Tropical Cyclone Oswald which caused damage to many of the assets which had been repeatedly damaged and restored from earlier disaster events. Correspondence was received from the Commonwealth in August 2013 agreeing to an extension of the Betterment fund to also cover LGAs declared for the two additional disaster events that occurred after Oswald through to June 2013 - Longreach Flood (18 February 2013) and Central and Southern Queensland Low (25 February to 5 March 2013).

Status

Expressions of Interest (EOI) were received by the Authority from 48 councils with approximately \$1 billion worth of Betterment projects to improve the resilience of infrastructure to natural disasters. Under the Betterment Framework, in addition to the normal NDRRA submission assessment process, the Authority considered the financial and non-financial benefits of the betterment proposal such as possible prior damage, loss of availability and its impact on economic or social factors of the community.

The Betterment Fund has now been allocated to 233 approved projects across 35 LGAs. These projects comprise Category B NDRRA funding for the restoration component of the works, a capped allocation from the Betterment fund for betterment works and Council contributions. Betterment projects include improved bridges, floodways, culverts, levees, water treatment plants and numerous roads across Queensland.

To date, over 100 Betterment projects worth more than \$70 million, and including \$29 million funding from the Betterment fund, have been reported to the Authority as practically complete. The remaining approved projects are due to be complete by 30 June 2014 and are expected to utilise the remaining funding from the \$80 million Betterment cap.

Betterment funding is allocated on the basis of the estimated cost of the approved projects. Should the betterment component of a project be delivered for a cost below the capped allocation, then the savings will be returned to the Betterment Fund for allocation to other eligible projects.

Section four: Progress Reports



4.1 Iconic projects in reconstructing Queensland*

Project	Value (\$m)	Description	Status
<p>BCC Ferry Terminals (Cat D)</p>	<p>\$73</p>	<p>The January 2011 floods damaged all of Brisbane City Council's CityCat and City Ferry terminals. To return service as soon as possible, Council replaced the seriously damaged terminals with temporary terminals. Seven temporary terminals were built to pre-flood standards meaning that in the event of another major flood, it was likely it would need to be rebuilt again.</p> <p>Works to replace the terminals with more resilient, permanent structures are being delivered as part of a special (Category D) funding package for Brisbane City Council. The design of the new terminals integrates technical innovation, improved accessibility for all passengers and flood resilience.</p> <p>The replacement ferry terminals are located at The University of Queensland (St Lucia), Regatta (Toowong), North Quay (CBD), Maritime Museum (South Brisbane), QUT Gardens Point (CBD), Holman Street (Kangaroo Point), Sydney Street (New Farm) and Dutton Park.</p>	<p>In April 2014, Brisbane City Council announced McConnell Dowell Constructors as the successful tenderer to complete upgrades of the Ferry terminals.</p> <p>To date, works have commenced on five ferry terminal projects.</p> <p>Piling works at QUT Gardens Points started in June 2014. All marine piles and the walkway sub-structure is now complete and landside works are around 95% complete. Cladding works are due for completion in January 2015 with the terminal expected to be complete in March 2015, weather permitting.</p> <p>Construction of the new University of Queensland CityCat terminal began in early July 2014 and all marine piles are now complete. Landside works are approximately 90% progressed, with around half these works completed since the last report. Completion of the terminal is expected in April 2015, weather permitting.</p> <p>Piling works on the Maritime Museum ferry terminal started in October 2014 with all but one of the marine piles installed at that time. Land based works commenced in late October. No further works will be undertaken on the structure until the terminal closure period occurs, currently scheduled for March 2015. At that time, the final pile will be installed and other upgrade works will commence.</p> <p>All marine piles are complete and construction of the pier superstructure is underway for the Regatta ferry terminal. The existing temporary terminal closed on 20 October 2014 and will remain closed while the upgrade is completed. The new terminal is expected to open in March 2015, weather permitting.</p> <p>Land-based civil works commenced on the Holman Street terminal site during November 2014 and are now complete.</p> <p>A component of the civil works contract for the North Quay terminal has recently been awarded with works to commence on-site in January 2015.</p> <p>The Sydney Street terminal also closed on 5 January 2015 to enable on-site construction to commencement. The new terminal is expected to open in April 2015, weather permitting.</p> <p>Off-site fabrication of the gangways and pontoons for all terminals has commenced for all terminals and is reported to be progressing well.</p> <p>Completion of all ferry terminal works is required by mid-2015.</p> <p><i>Left: Works underway on the walkway substructure at QUT Gardens Point ferry terminal (top); and installation of the pier superstructure at University of Queensland ferry terminal (bottom) - December 2014.</i></p>



* Iconic projects represent projects that may be complex or of great significance to the local community.

4.1 Iconic projects in reconstructing Queensland (continued)

Project	Value (\$m)	Description	Status
Burke Developmental Road (Normanton to Dimbulah)	\$4m	<p>During the Tropical Cyclone Oswald event in 2013, the Burke Developmental Road pavement and foundations had considerable saturation, which resulted in a loss of pavement strength.</p> <p>Closure of the road would have prevented resupply of townships and left remote communities cut off.</p>	<p>Detailed design of works was completed in May 2014.</p> <p>The contract was awarded to Carpentaria Shire Council in June 2014.</p> <p>Construction commenced in September 2014 and was completed in November 2014.</p>



Above: Burke Developmental Road – completed works, November 2014

Warrego Highway (Jondaryan to Dalby)	\$41m	<p>During the Tropical Cyclone Oswald natural disaster event in January 2013, the Warrego Highway pavement and foundations were saturated, resulting in structural weakening of the asset.</p> <p>This section of the road is built on predominantly flat terrain, which makes it vulnerable to water ingress through the pavement and foundations as adjacent table drains remain full for several weeks during and after these types of weather events.</p> <p>Long lengths of pavement failures across the full pavement width resulted along many section of the Highway.</p>	<p>The road construction contract was awarded to FK Gardner & Sons Group of Toowoomba.</p> <p>Construction started in July 2014 and final works were under way in Bowenville, Jondaryan and on the eastern side of Dalby towards the end of 2014.</p> <p>Construction was due for completion in December 2014, weather permitting.</p>
---	-------	---	--



Works underway on Warrego Highway near Dalby – multi-tyre roller with grit spreader for stone mastic asphalt works

4.2 Program spotlights

Cassowary Coast Regional Council Tully Gorge Road reconstruction project



In April 2014, the Cassowary Coast region suffered significant damage as a result of Tropical Cyclone Ita and associated rainfall.

Tully Gorge Road, located approximately 50kms south-west of Innisfail, was impacted at three sites over an 11km stretch near Cardstone, where landslips and pavement damage were sustained. The road is an important route for the local area as it provides the only access to the Kareeya Hydroelectric Power Station, Lake Koombuloomba and tourist sites along Tully River.

The Authority worked closely with Council to assess the damage and develop a scope of works that offered a value for money solution. The approved scope of works included the restoration of landslips via a combination of gabions, soil nails and reno-matting. Revegetated, geo-synthetically confined soil walls were also used to provide stabilisation against future landslips.

Although heavily damaged, it was necessary for Tully Gorge Road to remain open during reconstruction to allow access to the power station. Careful management by Council enabled limited width and traffic load during this phase.

The works were primarily undertaken by Geo Stabilise, a local Cairns specialist geotechnical construction company. The \$2million project began in August 2014 and final works are expected to be completed by late January 2015.

Left: landslip and other damage to Tully Gorge Road following the Tropical Cyclone Ita event of April 2014



Queensland Flood Mapping Program A winner at Resilient Australia Awards

Since it was initiated by the Authority and Department of Natural Resources in 2011, the Queensland Flood Mapping Program has assisted over 100 flood prone towns with a rapid hazard assessment and fit-for-purpose flood mapping.

Recognising this, the Department of Natural Resources and Mines – Queensland Flood Mapping Program was recently awarded joint winner in the State/Territory Government category at the 2014 Resilient Australia Awards.

The Minister for Justice, Michael Keenan, presented the awards to the National winners at a ceremony held at the Australian War Memorial in Canberra on 24 November 2014.

The Queensland Flood Mapping Program works in partnership with councils, local communities and emergency management groups.

The program underpins the resilience of the Queensland economy and its communities. It provides flood mapping information to assist in preventing, preparing, responding and recovering from floods.

The work is continuing with the Department undertaking the vital flood mapping work in 75 more locations.



Graeme Milligan (Queensland Flood Mapping Project Director), The Hon Michael Keenan MP, Sudarshan Karki (Principal Project Officer) and David Carlisle (Assistant Project Director).

4.2 Program spotlights (continued)

DTMR North Coast Reconstruction of Kenilworth–Brooloo Road

Kenilworth–Brooloo Road in the Sunshine Coast hinterland area sustained damage during the extreme weather events in 2013 and was initially blocked following major landslip and pavement damage at a number of locations.

Immediately following the event, DTMR undertook emergency repairs to remove debris, unblock drains and fix pavement damage, which enabled the road to operate as a single lane until reconstruction work commenced.

When reconstruction work began in March 2014, it was necessary to fully close the road along a 700m section north of Bluff Road, where the most significant landslip damage had occurred. Because of the extent of the damage and narrow width of the road, there was insufficient width to carry out repairs and enable machinery access without a full closure of the section of the road.

Arrangements were made for the only property owner within the closed section of road to gain access on particular days or by contacting the site supervisor in advance. For other road users, and nearby property owners, the road needed to be totally closed for six months. The detour added about 24km and 20 minutes to the journey between Kenilworth and Brooloo.

Kenilworth–Brooloo Road services about 600 vehicles per day, including commercial vehicles. This meant comprehensive communication and stakeholder engagement was required prior to the start of works. This liaison was ongoing and significant face-to-face engagement also occurred prior to and throughout the full closure with adjacent property owners, emergency services, schools, and businesses in Kenilworth and Brooloo.

Engagement was also required with the Gympie Regional Council due to council works occurring on a local connector road, Moy Pocket Road, as well as DTMR's Wide Bay Burnett District because of a full road closure for bridge works on a potential detour route along Skyring Creek Road. Cooperation between the two DTMR districts was essential to coordinate signage relating to the detours while there were two full road closures in place in the area concurrently for approximately two months.

Widespread communication also prepared stakeholders for the re-opening of the road to a single lane, and a short postponement of the re-opening by a week due to wet weather impacts. Communication tools included fact sheets, emails, doorknocks, phone calls, meetings, media statements, website updates and 13 19 40 updates. Stakeholder engagement on this project was a success, with few complaints received regarding the project.

The road re-opened to two lanes on 14 November 2014, and line-marking was due to be completed in December 2014, weather permitting.



Downhill landslip damage prior to reconstruction works commencing at the main damage location



Placement of final seal at a site during the reconstruction of Kenilworth-Brooloo Road

Section five: Communications



5.0 Communications

The Authority is focused on building stakeholder confidence in the reconstruction by ensuring consistent and regular communication of public information.

5.1 Communicating progress

Media analysis

There has been a total of 136 media items in December 2014 (81 print – 60%, 21 TV – 15%, 34 radio – 25%), which reached a cumulative audience of over 4.87 million people, with the focus this month being on council recovery, disaster season preparedness, and proposed changes to NDRRA funding.

There were media mentions for regions recovering and rebuilding from natural disasters across Queensland, as well as reflecting on the year that was 2014, including articles in the Herbert River Express, Innisfail Advocate, Hervey Bay City Independent, Port Douglas & Mossman Gazette, South East Advertiser, Daily Mercury, Fraser Coast Chronicle, Bowen Independent, Noosa News, Queensland Times and the Ipswich Advertiser; TV coverage on the WIN and Seven networks throughout the State; and radio mentions, including on ABC Radio Queensland, Radio National, 4WK Toowoomba, 4BC, Hot Tomato Gold Coast, 4CA Cairns, and Radio 4KZ Innisfail.

The final stages of Western Downs Regional Council’s multi-phased Regional Flood Recovery Works Program received coverage on local radio together with articles featuring in The Dalby Herald and the Chinchilla News & Murilla Advertiser.

South Burnett Regional Council’s betterment projects for Gordonbrook Dam and the Kingaroy Trunk Sewer received coverage on ABC Southern Queensland and in the South Burnett Times.

Engagement activities

On 1 December, **Minister for Local Government, Community Recovery and Resilience David Crisafulli** and the Authority’s **Chief Executive Officer Frankie Carroll** attended Community Cabinet in Mareeba.

Communications

There are a number of methods available to the public to communicate with the Authority.

The Authority’s website provides information to the public and continues to be enhanced with ongoing updates, including information about Betterment projects. There has been a large number of visits to the website since it was launched on 18 February 2011. At 31 December 2014, total website visits amounted to 449,745 - an increase of 1% since last month. *(See Figure 5.1.1)*

In December, the Authority received an additional 30 calls to its dedicated hotline and 138 additional pieces of written correspondence were received. *(See Figure 5.1.2)*

Fig. 5.1.1 Website traffic

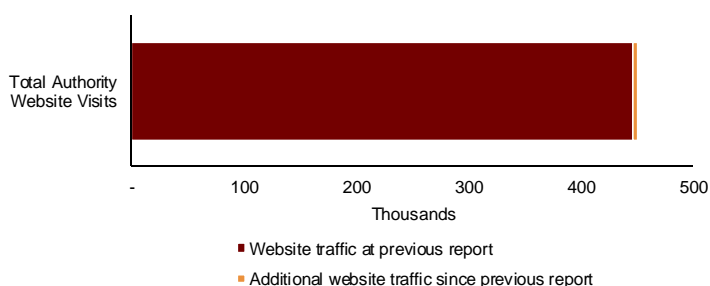
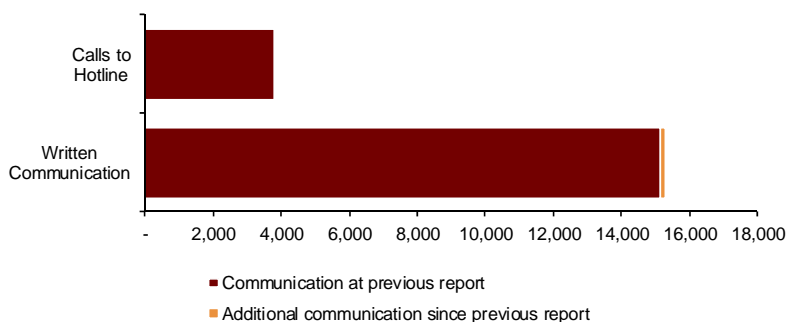


Fig. 5.1.2 Communications



(Source: the Authority at 31 December 2014)

5.2 Media reports

Funds for flood repairs

After the heavy pours at last comes the fix

WITH predictions of flash flooding this summer and years of rural roads cut due to heavy rains, work to repair the most recent impacts at Kin Kin have begun.

Member for Wide Bay Warren Truss said road reconstruction work had begun to repair flood-damaged sections of Kin Kin Rd.

"Road reconstruction works are under way along Kin Kin Rd, north of Murrays Rd, and are expected to be completed by late February 2015.

The work will involve grading and re-surfacing works to repair and stabilise the road, which was damaged by heavy rainfall during 2013," Mr Truss said.

To ensure the safety of motorists and road workers, reduced speeds and single-laning of the road will be in place for the duration of the reconstruction works.

Mr Truss said people while efforts were being made to minimise the impact of these roadworks, people should allow for delays that may arise.

"I thank motorists for their patience and co-operation during the construction period," Mr Truss said.

From early December 2014, additional pavement and road surfacing will be carried out about 1km north of Kin Kin. Works will be carried out up to seven days a week from 7am-6pm.

Later closures will occur. The reconstruction works are being funded under the Natural Disaster Relief and Recovery Arrangements (NDRRA), with up to 75% of the project cost covered by the Federal Government and the remaining cost funded by the Queensland Government.

"I thank motorists for their patience and co-operation during the construction period"

Noosa News, 5 December 2014



New bridge opened in Lockyer Valley

THORNTON residents have received an early Christmas present with the opening of Clarke Bridge yesterday.

The new bridge replaced the previous structure, which was damaged in the 2011 flood then washed away in the 2013 flood.

Restoration works are approved by the Queensland Reconstruction Authority and delivered under the Natural Disaster Relief and Recovery Arrangements, a joint Federal and State Government program.

Council also contributed funds to the project to install guard rails.

Award for Isaac

ISAAC Regional Council took top honours in the most hotly contested category at the Mackay Engineers Australia Engineering Excellence Awards.

Its Natural Disaster Relief Recovery Arrangements (NDRRA) Flood Restoration Program won the Project Management Award, described as the most competitive category.

The awards honour engineering and project management achievements. Isaac's program is the largest flood restoration program in the region's history.

Daily Mercury,

Queensland Times, 5 December 2014

CHARTERS TOWERS REGIONAL COUNCIL Council Connections Maintenance program on track

MAINTENANCE of Charters Towers Regional Council's rural roads network for 2014-15 is on track and on budget. With a budget allocation of \$4.48 million to maintain the 3800km of unsealed roads in the council region.

Following the completion of the National Disaster Relief and Recovery Arrangements (NDRRA) road repair program in June this year at a cost of \$4.7 million, council's rural road network is in the best condition it has been for decades," Cr Bailey said.

"What we do now within our roads infrastructure programme is to plan and maintain a program that will keep the extensive rural road network in the best condition possible."

Cr Bailey said a lot of planning had gone into setting up the roads maintenance program that will return the best value for money.

"A positive outcome from council's roads infrastructure programme is the NDRRA road repair program was the spending that has occurred in the work time," he said.

"Council's roads infrastructure crew are now much better equipped to carry out high quality road maintenance and repair work."

Council employs four road gangs which are continually working in different areas of the council region, carrying out the scheduled maintenance program.

A recent visit to Brown Station at the southern end of the council region by the Mayor, Councilors and senior staff, brought forward positive comments from property owners on the condition of the road network in their areas.

Cr Bailey said a road maintenance crew has been working for a period of weeks in recent months on the Buchanan Road and other roads in that area.

"It was certainly pleasing to get that positive feedback from the property owners down there," Mr Scott said.

"The roads infrastructure are working hard to ensure that categories are getting very good value from the roads maintenance budget," he said.

"I'd like to see the goal to maintain the unsealed road network to a high standard, and to ensure that the end of the financial year goal, our maintenance program is on track and is right on budget."

Cr Bailey said a lot of planning had gone into setting up the roads maintenance program that will return the best value for money.

"A positive outcome from council's roads infrastructure programme is the NDRRA road repair program was the spending that has occurred in the work time," he said.

"Council's roads infrastructure crew are now much better equipped to carry out high quality road maintenance and repair work."

Council employs four road gangs which are continually working in different areas of the council region, carrying out the scheduled maintenance program.

A recent visit to Brown Station at the southern end of the council region by the Mayor, Councilors and senior staff, brought forward positive comments from property owners on the condition of the road network in their areas.

Cr Bailey said a road maintenance crew has been working for a period of weeks in recent months on the Buchanan Road and other roads in that area.

"It was certainly pleasing to get that positive feedback from the property owners down there," Mr Scott said.

"The roads infrastructure are working hard to ensure that categories are getting very good value from the roads maintenance budget," he said.

"I'd like to see the goal to maintain the unsealed road network to a high standard, and to ensure that the end of the financial year goal, our maintenance program is on track and is right on budget."



Northern Miner, 5 December 2014

Cr Bill SHANNON Cassowary Coast Mayor

It's been a great year

CHRISTMAS and New Year is the period of reflection on the year that has past and planning for the one to come — time for family, friends, rest and renewal.

The last year has seen several major projects underway or completed. The Innisfail Library, the Tully Showgrounds and Tully Entrance upgrades, the opening of the Kirrama Range Road, Mission Beach Marine Infrastructure and the Cardwell Fore-shore project.

It has also been a year of significant achievement beyond capital works. We are now well placed to achieve an upgrade in our financial viability and we have a new Draft Planning Scheme in the final stages.

With the upcoming integration of waste collection arrangements across the region we will have completed all amalgamation issues.

We had visits from both the Governor-General and the Queensland Governor, and had a Queensland Government Cabinet meeting in our region.

Four years after Cyclone Yasi we have substantially recovered physically, but the environmental and emotional recovery will take longer.

It has been very satisfying to be achieving projects on time and on budget that contribute to our life-style, as opposed to the amenity of life issues such as water and sewerage, which necessarily dominated the earliest years of the CCRC.

Next year is promising to see a continuation in improved economic conditions locally. I wish everyone a safe, enjoyable and restful Christmas and New Year period and look forward to 2015 with enthusiasm.

Innisfail Advocate, 17 December 2014

PIPE WORKS

Bigger line to replace flood-damaged trunk sewer

WORK has started to replace the trunk sewer in River Rd, Kingaroy. The \$1.03 million project is expected to be finished early next year and was joint-funded by the State and Federal governments through the Natural Disaster Relief and Recovery Arrangements. The damaged section carries much of the sewage from Kingaroy to the Waste Water Treatment Plant on Hodges Rd. The trunk sewer was significantly damaged

during the 2011 and 2013 floods when floodwater overloaded the sewer infrastructure, resulting in three major collapses. South Burnett Regional Council infrastructure manager Russell Hood said other sections of the trunk sewer were also severely damaged and would collapse if not repaired. The trunk sewer size has been increased to 600mm from 375mm diameter to cope with increased flows.

South Burnett Times, 5 December 2014

SEASIDE VILLAGE SUCCESS

IT HAS BEEN a success story for the town of Cardwell this year, celebrating 150 years of European settlement.

Cassowary Coast Mayor Bill Shannon said the past year had seen several major projects underway or completed.

The \$40 million reconstructing Cardwell project refurbished the town centre and of course, the opening of the Kirrama Range Road, eight years after being closed.

"It has also been a year of significant achievement beyond capital works," Cr Shannon said.

New events shook the town, the inaugural Sacred Moon Festival was introduced to promote the spiritual and natural health and healing activities available in Cardwell and outlying areas.

And a local business, Cardwell Beachfront Motel, was awarded a 2014 Trip Advisor Certificate of Excellence.

Cr Shannon said next year is promising to see a continuation in improved economic conditions locally.

"Four years after Cyclone Yasi we have substantially recovered physically, but the environmental and emotional recovery will take longer."

"We are now well placed to achieve an upgrade in our financial viability and we have a new Draft Planning Scheme in the final stages."

"With the upcoming integration of waste collection arrangements across the region we will have completed all amalgamation issues."

arrangements across the region we will have completed all amalgamation issues."

Cr Shannon said it has been very satisfying to be achieving projects on time and on budget.

"Council continues to rollout restoration works, as part of our Regional Flood Recovery Works program, on regional roads across the

Western Downs Regional Council spokesmen for services Councillor Andrew Smith said it was "a great milestone in council's ongoing flood recovery works."

"Council continues to rollout restoration works, as part of our Regional Flood Recovery Works program, on regional roads across the

\$80m road works set for April finish

THE MAMMOTH job of road restoration around the Western Downs is nearing completion, at a cost of \$80 million to state and federal governments and the local council.

The Regional Flood Recovery Works program to repair damage from the summer 2010/11 and 2012 floods was completed on time and on budget.

Western Downs Regional Council spokesmen for services Councillor Andrew Smith said it was "a great milestone in council's ongoing flood recovery works."

"Council continues to rollout restoration works, as part of our Regional Flood Recovery Works program, on regional roads across the

Western Downs Regional Council spokesmen for services Councillor Andrew Smith said it was "a great milestone in council's ongoing flood recovery works."

"Council continues to rollout restoration works, as part of our Regional Flood Recovery Works program, on regional roads across the

Western Downs Regional Council spokesmen for services Councillor Andrew Smith said it was "a great milestone in council's ongoing flood recovery works."

"Council continues to rollout restoration works, as part of our Regional Flood Recovery Works program, on regional roads across the

Western Downs Regional Council spokesmen for services Councillor Andrew Smith said it was "a great milestone in council's ongoing flood recovery works."

"Council continues to rollout restoration works, as part of our Regional Flood Recovery Works program, on regional roads across the

Western Downs Regional Council spokesmen for services Councillor Andrew Smith said it was "a great milestone in council's ongoing flood recovery works."

"Council continues to rollout restoration works, as part of our Regional Flood Recovery Works program, on regional roads across the

Western Downs Regional Council spokesmen for services Councillor Andrew Smith said it was "a great milestone in council's ongoing flood recovery works."

"Council continues to rollout restoration works, as part of our Regional Flood Recovery Works program, on regional roads across the

Western Downs Regional Council spokesmen for services Councillor Andrew Smith said it was "a great milestone in council's ongoing flood recovery works."

"Council continues to rollout restoration works, as part of our Regional Flood Recovery Works program, on regional roads across the

Western Downs Regional Council spokesmen for services Councillor Andrew Smith said it was "a great milestone in council's ongoing flood recovery works."

Western Downs Regional Council spokesmen for services Councillor Andrew Smith said it was "a great milestone in council's ongoing flood recovery works."

Western Downs Regional Council spokesmen for services Councillor Andrew Smith said it was "a great milestone in council's ongoing flood recovery works."

It's looking up the Track

NIKE DARYL

THE rainforest has enjoyed last weekend's storms. Between 50 and 70mm of rain has washed away months of red and khaki dust from the roadside plants, kick-started new growth and even put a little refreshing water in the creeks throughout the Diatrine Coast.

It's also been good news for the roadbuilders who are planning to resurface 17 kms of the Bloomfield Track damaged in months ago by the April cyclonic rain. Work is expected to commence this week. Paul Hoye, general manager operations of Douglas Shire says:

"It is the most affected section of the Bloomfield Track and the grading and resurfacing is expected to be completed within 50 days.

"Motorists travelling on this section of the Bloomfield Track can expect minor delays as the works are carried out."

"The repairs are being conducted under National Disaster Relief and Recovery Arrangements (NDRRA) funding which was only recently approved to fix up damage suffered in April as a result of Cyclone Ita on a 'like-for-like' basis.

"Because of the impending wet season and process for NDRRA funding, repairs on the southern section of

the Bloomfield Track from Cape Tribulation to the Corrie Range will occur immediately after the wet season."

A major milestone should be reached this week as the nature-inspired Bridge over Woodbadda Creek gets its final pour of concrete decking, plus approaches and paving, weather permitting.

The deck will need a few days of curing, Paul Hoye says:

"It is anticipated the new Woodbadda Bridge will be open to vehicular traffic before Christmas. The exact date is weather dependent at this stage."

"Heavy vehicles will be restricted from using the new bridge for up to a few weeks after it is opened to normal vehicular traffic to allow the concrete to settle properly but the old crossing will remain open to heavy traffic."

There won't be much debate over the aesthetics of the new Woodbadda Creek Bridge.

The rock cladding on the bridge blends in really well with the surroundings. It could be an iconic view, just like the Richmond Bridge in Tasmania.

Once the area is cleaned up, the late afternoon colours and reflections will look superb from the popular swimming spot upstream. It'll look even better in a year or two when the re-vegetation process matures.

Some time ago, Council gardeners collected native seeds from the bridge area and now they're being nursery grown, waiting for re-planting.

The citizens of China Camp are also benefiting from National Disaster Relief Funding.

Mr Hoye's statement continues: "Repairs to the road network around China Camp have been completed, from 12km along China Camp Road shire boundary at Wyal Wyal to 26km ending at China Camp area."

"The repairs consisted of gravel re-surfacing and grading, road maintenance and new pipework at Lovell's Gully."

"Prior to these repairs being carried out, residents couldn't move their cattle and tourists were prevented from accessing China Camp due to the poor state of the road."

"There are growing opportunities in China Camp including tourism and these improvements will greatly assist residents to promote their economic development endeavours."

Some time ago, Council gardeners collected native seeds from the bridge area and now they're being nursery grown, waiting for re-planting.

The citizens of China Camp are also benefiting from National Disaster Relief Funding.

Mr Hoye's statement continues: "Repairs to the road network around China Camp have been completed, from 12km along China Camp Road shire boundary at Wyal Wyal to 26km ending at China Camp area."

"The repairs consisted of gravel re-surfacing and grading, road maintenance and new pipework at Lovell's Gully."

"Prior to these repairs being carried out, residents couldn't move their cattle and tourists were prevented from accessing China Camp due to the poor state of the road."

"There are growing opportunities in China Camp including tourism and these improvements will greatly assist residents to promote their economic development endeavours."

Some time ago, Council gardeners collected native seeds from the bridge area and now they're being nursery grown, waiting for re-planting.

The citizens of China Camp are also benefiting from National Disaster Relief Funding.

Mr Hoye's statement continues: "Repairs to the road network around China Camp have been completed, from 12km along China Camp Road shire boundary at Wyal Wyal to 26km ending at China Camp area."

"The repairs consisted of gravel re-surfacing and grading, road maintenance and new pipework at Lovell's Gully."

"Prior to these repairs being carried out, residents couldn't move their cattle and tourists were prevented from accessing China Camp due to the poor state of the road."

"There are growing opportunities in China Camp including tourism and these improvements will greatly assist residents to promote their economic development endeavours."

Some time ago, Council gardeners collected native seeds from the bridge area and now they're being nursery grown, waiting for re-planting.

The citizens of China Camp are also benefiting from National Disaster Relief Funding.

Mr Hoye's statement continues: "Repairs to the road network around China Camp have been completed, from 12km along China Camp Road shire boundary at Wyal Wyal to 26km ending at China Camp area."

"The repairs consisted of gravel re-surfacing and grading, road maintenance and new pipework at Lovell's Gully."

"Prior to these repairs being carried out, residents couldn't move their cattle and tourists were prevented from accessing China Camp due to the poor state of the road."

"There are growing opportunities in China Camp including tourism and these improvements will greatly assist residents to promote their economic development endeavours."

Some time ago, Council gardeners collected native seeds from the bridge area and now they're being nursery grown, waiting for re-planting.

The citizens of China Camp are also benefiting from National Disaster Relief Funding.

Mr Hoye's statement continues: "Repairs to the road network around China Camp have been completed, from 12km along China Camp Road shire boundary at Wyal Wyal to 26km ending at China Camp area."

"The repairs consisted of gravel re-surfacing and grading, road maintenance and new pipework at Lovell's Gully."

"Prior to these repairs being carried out, residents couldn't move their cattle and tourists were prevented from accessing China Camp due to the poor state of the road."

"There are growing opportunities in China Camp including tourism and these improvements will greatly assist residents to promote their economic development endeavours."

Some time ago, Council gardeners collected native seeds from the bridge area and now they're being nursery grown, waiting for re-planting.

The citizens of China Camp are also benefiting from National Disaster Relief Funding.

Mr Hoye's statement continues: "Repairs to the road network around China Camp have been completed, from 12km along China Camp Road shire boundary at Wyal Wyal to 26km ending at China Camp area."

"The repairs consisted of gravel re-surfacing and grading, road maintenance and new pipework at Lovell's Gully."

"Prior to these repairs being carried out, residents couldn't move their cattle and tourists were prevented from accessing China Camp due to the poor state of the road."

"There are growing opportunities in China Camp including tourism and these improvements will greatly assist residents to promote their economic development endeavours."

Some time ago, Council gardeners collected native seeds from the bridge area and now they're being nursery grown, waiting for re-planting.

The citizens of China Camp are also benefiting from National Disaster Relief Funding.

Mr Hoye's statement continues: "Repairs to the road network around China Camp have been completed, from 12km along China Camp Road shire boundary at Wyal Wyal to 26km ending at China Camp area."

"The repairs consisted of gravel re-surfacing and grading, road maintenance and new pipework at Lovell's Gully."

"Prior to these repairs being carried out, residents couldn't move their cattle and tourists were prevented from accessing China Camp due to the poor state of the road."

"There are growing opportunities in China Camp including tourism and these improvements will greatly assist residents to promote their economic development endeavours."

Some time ago, Council gardeners collected native seeds from the bridge area and now they're being nursery grown, waiting for re-planting.

The citizens of China Camp are also benefiting from National Disaster Relief Funding.

Mr Hoye's statement continues: "Repairs to the road network around China Camp have been completed, from 12km along China Camp Road shire boundary at Wyal Wyal to 26km ending at China Camp area."

"The repairs consisted of gravel re-surfacing and grading, road maintenance and new pipework at Lovell's Gully."

"Prior to these repairs being carried out, residents couldn't move their cattle and tourists were prevented from accessing China Camp due to the poor state of the road."

"There are growing opportunities in China Camp including tourism and these improvements will greatly assist residents to promote their economic development endeavours."

Some time ago, Council gardeners collected native seeds from the bridge area and now they're being nursery grown, waiting for re-planting.

The citizens of China Camp are also benefiting from National Disaster Relief Funding.

Mr Hoye's statement continues: "Repairs to the road network around China Camp have been completed, from 12km along China Camp Road shire boundary at Wyal Wyal to 26km ending at China Camp area."

"The repairs consisted of gravel re-surfacing and grading, road maintenance and new pipework at Lovell's Gully."

"Prior to these repairs being carried out, residents couldn't move their cattle and tourists were prevented from accessing China Camp due to the poor state of the road."

"There are growing opportunities in China Camp including tourism and these improvements will greatly assist residents to promote their economic development endeavours."

Some time ago, Council gardeners collected native seeds from the bridge area and now they're being nursery grown, waiting for re-planting.

The citizens of China Camp are also benefiting from National Disaster Relief Funding.

Mr Hoye's statement continues: "Repairs to the road network around China Camp have been completed, from 12km along China Camp Road shire boundary at Wyal Wyal to 26km ending at China Camp area."

"The repairs consisted of gravel re-surfacing and grading, road maintenance and new pipework at Lovell's Gully."

"Prior to these repairs being carried out, residents couldn't move their cattle and tourists were prevented from accessing China Camp due to the poor state of the road."

"There are growing opportunities in China Camp including tourism and these improvements will greatly assist residents to promote their economic development endeavours."

Some time ago, Council gardeners collected native seeds from the bridge area and now they're being nursery grown, waiting for re-planting.

The citizens of China Camp are also benefiting from National Disaster Relief Funding.

Mr Hoye's statement continues: "Repairs to the road network around China Camp have been completed, from 12km along China Camp Road shire boundary at Wyal Wyal to 26km ending at China Camp area."

"The repairs consisted of gravel re-surfacing and grading, road maintenance and new pipework at Lovell's Gully."

"Prior to these repairs being carried out, residents couldn't move their cattle and tourists were prevented from accessing China Camp due to the poor state of the road."

"There are growing opportunities in China Camp including tourism and these improvements will greatly assist residents to promote their economic development endeavours."

Some time ago, Council gardeners collected native seeds from the bridge area and now they're being nursery grown, waiting for re-planting.

The citizens of China Camp are also benefiting from National Disaster Relief Funding.

Mr Hoye's statement continues: "Repairs to the road network around China Camp have been completed, from 12km along China Camp Road shire boundary at Wyal Wyal to 26km ending at China Camp area."

"The repairs consisted of gravel re-surfacing and grading, road maintenance and new pipework at Lovell's Gully."

"Prior to these repairs being carried out, residents couldn't move their cattle and tourists were prevented from accessing China Camp due to the poor state of the road."

"There are growing opportunities in China Camp including tourism and these improvements will greatly assist residents to promote their economic development endeavours."

Some time ago, Council gardeners collected native seeds from the bridge area and now they're being nursery grown, waiting for re-planting.

The citizens of China Camp are also benefiting from National Disaster Relief Funding.

Mr Hoye's statement continues: "Repairs to the road network around China Camp have been completed, from 12km along China Camp Road shire boundary at Wyal Wyal to 26km ending at China Camp area."

"The repairs consisted of gravel re-surfacing and grading, road maintenance and new pipework at Lovell's Gully."

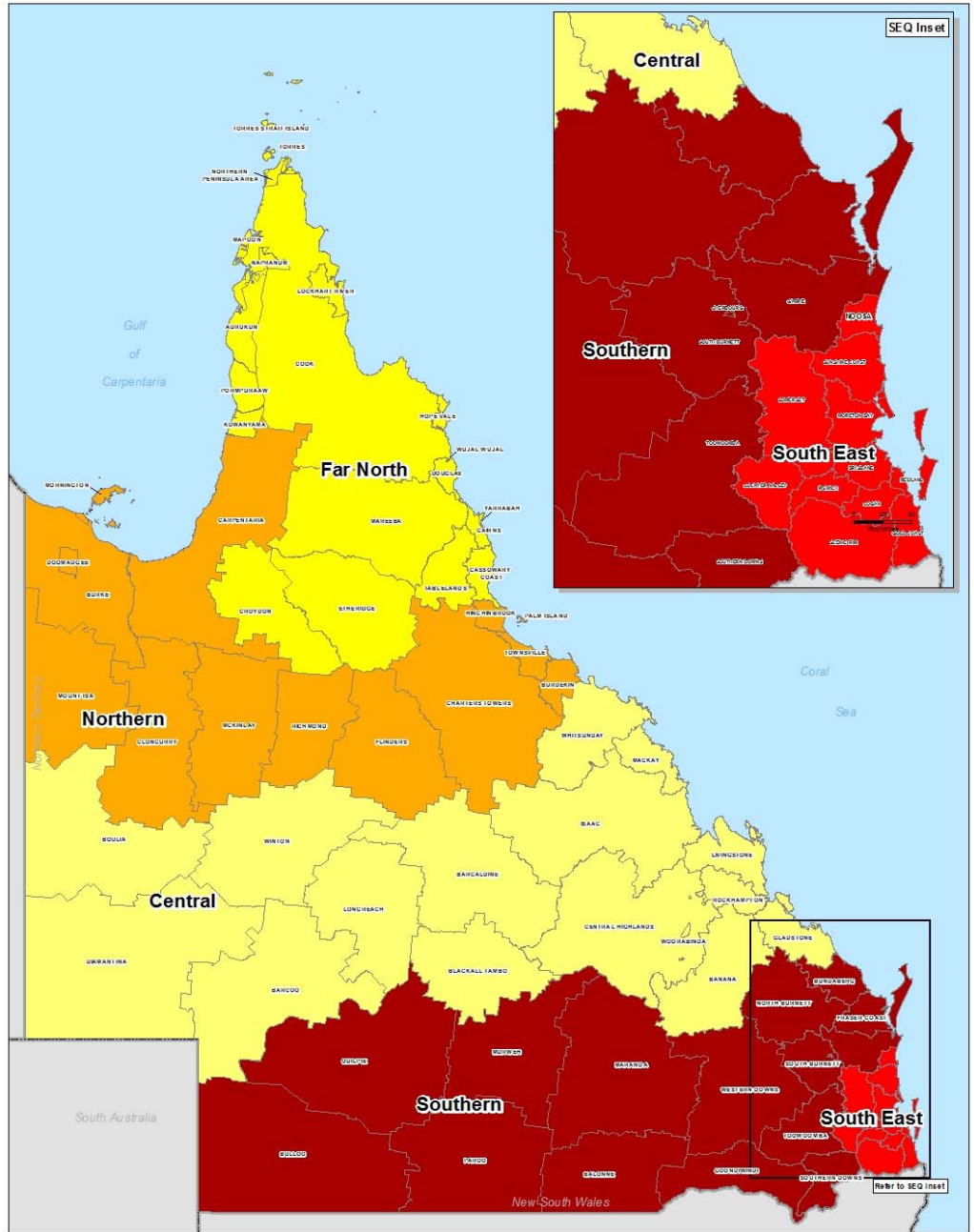
"Prior to these repairs being carried out, residents couldn't move their cattle and tourists were prevented from accessing China Camp due to the poor state of the road."

"There are growing opportunities in China Camp including tourism and these improvements will greatly assist residents to promote their economic development endeavours."

Appendices

Appendix A: Local Government Areas by Region

Region	Local Government Areas (LGA's)
Far North Queensland (FNQ)	ASC Aurukun Shire Council CRC Cairns Regional Council CCRC Cassowary Coast Regional Council CoSC Cook Shire Council CrSC Croydon Shire Council DSC Douglas Shire Council ESC Etheridge Shire Council HVASC Hope Vale Aboriginal Shire Council KASC Kowanyama Aboriginal Shire Council LRASC Lockhart River Aboriginal Shire Council MASC Mapoon Aboriginal Shire Council MbaSC Mareeba Shire Council NASC Napranum Aboriginal Shire Council NPARC Northern Peninsula Area Regional Council PASC Pormpuraaw Aboriginal Shire Council TRC Tablelands Regional Council TSC Torres Shire Council TSIRC Torres Strait Island Regional Council WWASC Wujal Wujal Aboriginal Shire Council YASC Yarrabah Aboriginal Shire Council
North Queensland (NQ)	BrdSC Burdekin Shire Council BrkSC Burke Shire Council CSC Carpentaria Shire Council CTRC Charters Towers Regional Council ClSC Cloncurry Shire Council DASC Doomadgee Aboriginal Shire Council FSC Flinders Shire Council HSC Hinchinbrook Shire Council McSC McKinlay Shire Council MoSC Mornington Shire Council MICC Mount Isa City Council PIASC Palm Island Aboriginal Shire Council RSC Richmond Shire Council TCC Townsville City Council
Central Queensland (CQ)	BanSC Banana Shire Council BarRC Barcaldine Regional Council BarSC Barcoo Shire Council BTRC Blackall-Tambo Regional Council BOSC Boulia Shire Council CHRC Central Highlands Regional Council DSC Diamantina Shire Council GSC Gladstone Regional Council IRC Isaac Regional Council LSC Livingstone Shire Council LRC Longreach Regional Council MacRC Mackay Regional Council RRC Rockhampton Regional Council WRC Whitsunday Regional Council WSC Winton Shire Council WASC Woorabinda Aboriginal Shire Council
Southern Queensland (SQ)	BaISC Balonne Shire Council BSC Bulloo Shire Council BRB Bundaberg Regional Council CASC Cherbourg Aboriginal Shire Council FCRC Fraser Coast Regional Council GoRC Goondiwindi Regional Council GRC Gympie Regional Council MarRC Maranoa Regional Council MuSC Murweh Shire Council NBRC North Burnett Regional Council PSC Paroo Shire Council QSC Quilpie Shire Council SBRC South Burnett Regional Council SDRC Southern Downs Regional Council ToRC Toowoomba Regional Council WDRC Western Downs Regional Council
South East Queensland (SEQ)	BCC Brisbane City Council GCCC Gold Coast City Council ICC Ipswich City Council LVRC Lockyer Valley Regional Council LCC Logan City Council MBRC Moreton Bay Regional Council NSC Noosa Shire Council RCC Redland City Council SRRC Scenic Rim Regional Council SRC Somerset Regional Council SCRC Sunshine Coast Regional Council



Local Government Areas and QldRA Reporting Regions
 Scale at A4: 1:6,700,000

Legend

- Far North Queensland
- North Queensland
- Central Queensland
- Southern Queensland
- South East Queensland
- Local Government Areas

As at 5/02/2014

© P. Hoyle 2009. 8049-8000-0200-A. QLD RA Reporting Regions 2014.MXD



This page left blank intentionally



