

# Richmond Shire Council Local Monsoon Trough Recovery Plan

North & Far North Queensland Monsoon Trough  
25 January - 14 February 2019



Approved by: Richmond Shire Council  
on 16 April 2019

Recovery narrative

## Recovery narrative

### Overview of Richmond Shire Council

The Shire of Richmond is a local government area in north western Queensland covering an area of 26,655 square kilometres. The township of Richmond is situated on the banks of the Flinders River and is the central point on the transport corridor between Mount Isa and Townsville. The Shire includes the small township of Maxwellton. Richmond's major industries are agriculture, mining and tourism.

Years of drought have impacted the shire leading to a slight population decline and a downturn in small business. However, Richmond has a strong economy with a high number of shops reflective of the population, and a range of land holders including, family properties, small properties, larger holdings and multiple properties. The Shire is divided by the Flinders Highway and the Great Northern Railway Line. Properties south of the railway line, on the open downs area, below the tick line and in 'clean' country are renowned for fattening and breeding. North of the highway is above the tick line and the timbered downs and forest country is known as good breeding country. The cattle produced from Richmond are recognised as a premium product and perform strongly in the domestic and export markets.

The shire is highly resilient, innovative and open to new opportunities. There are substantial social connections across all the communities making up the shire. There is strong community spirit and an inherent strength and adaptability held by those who call Richmond Shire home. There is strong leadership at the council level and a high degree of community engagement.

**Council values:** Respect and Integrity, Accountability, Quality of Living, Continuous Improvement, Regional Collaboration, Leadership and Teamwork

**Local Recovery Group:** Chaired by Cr June Kuhl

**Lines of Recovery:** Human and Social, Economic, Infrastructure (roads and buildings).

**Key stakeholders:** Richmond Shire Council, Community Members in Richmond Shire, Freight Companies, Aerial Services, Contractors, Qld Health, Royal Flying Doctor Service, North West Remote Health, Department of State Development, Infrastructure and Planning, Rural financial counsellors and Charities

## Recovery objectives

### Immediate term

1. Community Engagement Campaigns (ongoing)
2. A donations management strategy is developed

### Short term

3. Environmental clean-up strategy is utilised (carcass disposal)
4. Bio-Security plans are current – On-farm and Council

### Medium term

5. Road transport network restoration and betterment
6. Develop and grow farming in the shire
7. Diversification of resource sector

### Long term

8. Develop Richmond into a freight transport hub (road and rail)

### Long term (cont.)

9. Enhance Telecommunications
10. Increase tourism
11. Fully sealed road connection to Winton and Croydon (3 years)
12. New crossing for the Top Crossing of the Flinders River
13. Cambridge Crossing on the Stawelton River raised
14. Kronosaurus Korner Stage 3 (3-5 years)
15. Irrigation project (2 years)
16. Mining and processing plant (3-5 years)
17. New artesian bore (2 years)

### Ongoing

18. Enhance infrastructure; business as usual
19. Support small business
20. Support continued education
21. Community events to maintain and enhance connectedness

Recovery objectives

Damage and impacts

## Damage and impacts

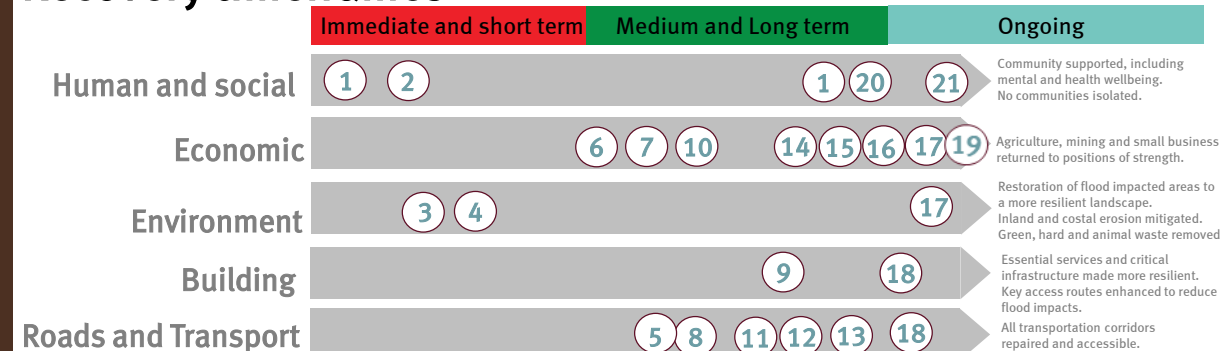
### Human and Social

- Community wellbeing and connectedness impacted
- Two evacuations of individuals from their residences
- Impacts to wellbeing as a result of a feeling of helplessness around the protection of cattle and other stock
- Impacts to wellbeing of children and support staff including teachers, nurses and council
- Isolation – children in boarding schools; families separated from each other
- Isolation – loss of access to town and properties
- No mail delivery
- Potential health risks - boils, infections, accidents, snake bites etc.
- Wellbeing – ongoing concern over wellbeing of cattle, re-stocking, weed control and erosion
- Community events impacted by a lack of available sponsorship
- Potential impacts on children's continuing education
- Lack of stores and medical supplies
- Loss of telecommunications

### Economic

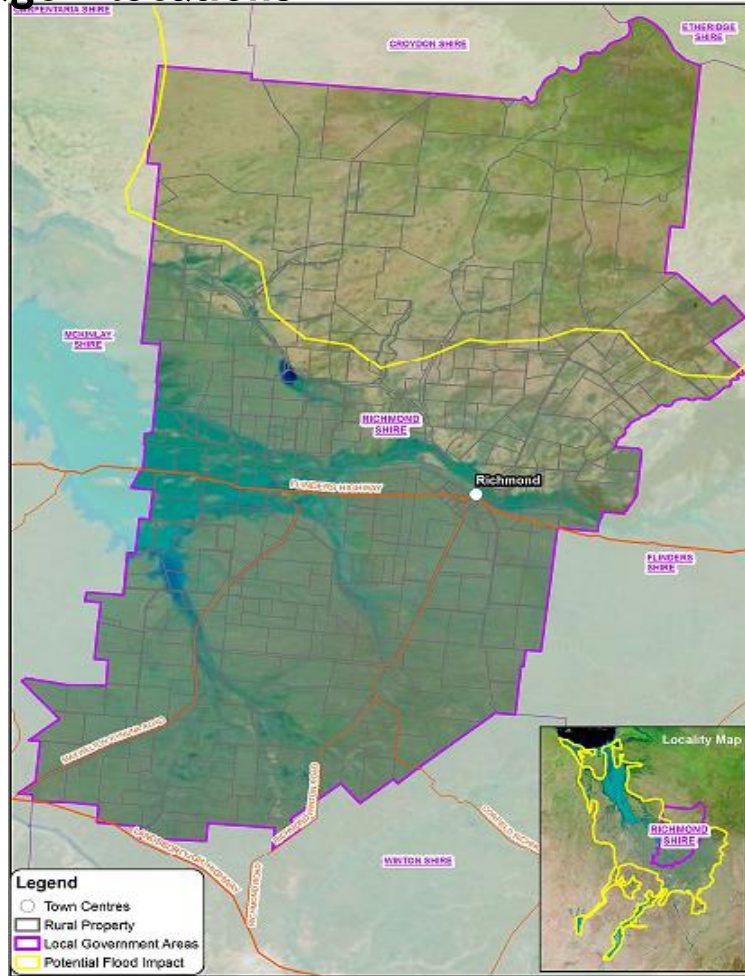
- Agriculture industry – loss of livestock including genetics and bloodlines Value over 5 years \$110million
- Agriculture industry – loss of fodder; machinery; fencing and water infrastructure Value \$20million
- Agriculture industry – loss of income due to death of livestock (at least 75 000 head) Value \$37.5million
- Agriculture industry – exacerbation of existing financial stress
- Agriculture industry – loss of income due to lack of access to the sale yards - \$140,000 through shire normally
- Agriculture industry – loss of income and damage to farming land and infrastructure
- Agricultural industry – loss of income to support industries for example livestock transport, fodder, fuel, fencing and mustering contractors and pastoral agencies
- Loss of income to small businesses – tourism; garages; road houses; hardware; newsagency; hair dressers; medical providers and grocers
- Loss of income to small businesses – resulting on impacts to community events
- Increased financial stress for small businesses – loss of businesses; increased in freight and operating costs; increased debtors
- Lack of ability for primary producers to diversify
- Accommodation shortages (tourism and community support staff)

## Recovery timeframes



Recovery timeframes

## Damage – locations



## Activations for Disaster Recovery Funding Assistance

For details of activations and assistance measures visit [www.qra.qld.gov.au/activations](http://www.qra.qld.gov.au/activations)

### Disaster relief measure

Disaster relief measure	Activation date
• Essential Services Safety and Reconnection Scheme *	08/02/2019
• Personal Hardship Assistance Scheme (PHAS) *	08/02/2019
• Counter Disaster Operations	01/02/2019
• Reconstruction of Essential Public Assets	01/02/2019
• Disaster Assistance (Small Business) Loans	06/02/2019
• Disaster Assistance (Essential Working Capital) Loans Scheme for Small Business	06/02/2019
• Disaster Assistance (Not-for-profit) Loans	06/02/2019
• Disaster Assistance (Essential Working Capital) Loans Scheme for Not-for-profit	06/02/2019
• Disaster Assistance (Primary Producers) Loans	06/02/2019
• Disaster Assistance (Essential Working Capital) Loans Scheme for Primary Producers	06/02/2019
• Freight Subsidies for Primary Producers	06/02/2019
• Special Disaster Assistance Recovery Grants for Primary Producers	07/02/2019
• Special Disaster Assistance Recovery Grants for Small Business	15/02/2019
• Special Disaster Assistance Recovery Grants for Small Business	15/02/2019

## Recovery tasks

- Provision of immediate basic needs – human and livestock (food, medical and fodder) **(Complete)**
- Community Communications Campaign – use local resources; recovery updates; agency collaboration; Richmond community engagement questionnaire (Qld Health, Department of Agriculture and Fisheries / Richmond Shire Council) **(Complete)**
- Distribution of 127 packs of Personal Protective Equipment **(Complete)**
- Develop education strategies to support the continuation and retention of students; assistance with fees, decreasing tertiary education drop-out rates
- Develop a go local program to support community businesses **(Commenced)**
- Ensure council utilises local suppliers where possible **(On-going)**
- Obtain increased water access (new bore) to support farming diversification
- Repair and complete a fully sealed road connection on key transport routes (Richmond to Winton and Richmond to Croydon) in conjunction with the Winton and Croydon Shires
- Implementation of the Carcass Disposal Strategy Master Plan **(Complete)**
- Design and implement marketing campaigns focussed on ‘Destination Richmond’
- Increase visitation to Kronosaurus Korner/Visitor Information Centre
- Ensure diversification tasks encourage employment, population growth and are supported by critical infrastructure
- Support community recovery through community events
- Donations management of funding from all Charities **(On-going)**
- Support the small business roadshow **(Complete)**
- Implement community wellbeing measures including an information hub with visiting service providers (Royal Flying Doctors, Queensland Health, North west Remote Health, Rural Financial Counselling) **(Complete)**
- Implementation of March Quarter Rates relief **(Complete)**
- On Farm Biosecurity Plans reviewed and updated across the shire
- Weed management programs are implemented
- Apply for funding to support further recovery initiatives
- Communications restored and improved

## Measures of success

Richmond was impacted by a 1 in 500 year event in late January and early February 2019. This occurred after a six year drought. Throughout the event the Council ensured there was a large degree of communication with the community. This included a multi-channelled approach to communications, including the use of email, Facebook, noticeboards, face to face engagement and the council website.

Richmond’s recovery measures of success are:

### Human and Social

- Continuation of education for children in the community
- Community able to live and work in their chosen profession, it is important members of the community are able to ‘live, laugh and labour’
- Community connectedness and participation is achieved through various community events
- Community access to services to support needs
- Improved communications

### Economic

- Establishment and operation of farming projects
- Increased visitation by tourists to Richmond
- Strong local economy, characterised by number of shops operating, community using local suppliers
- Increase in population
- Richmond becomes a tourism destination

### Environment

- Environmental management allows for the diversification of farming
- Environmental management allows for the maintenance of properties

### Building

- Stage 3 Kronosaurus Korner completed

### Roads and Transport

- A fully sealed road connection to Winton and Croydon
- Infrastructure is reflective of current and future community needs (roads) and is future proofed and resilient to known challenges.